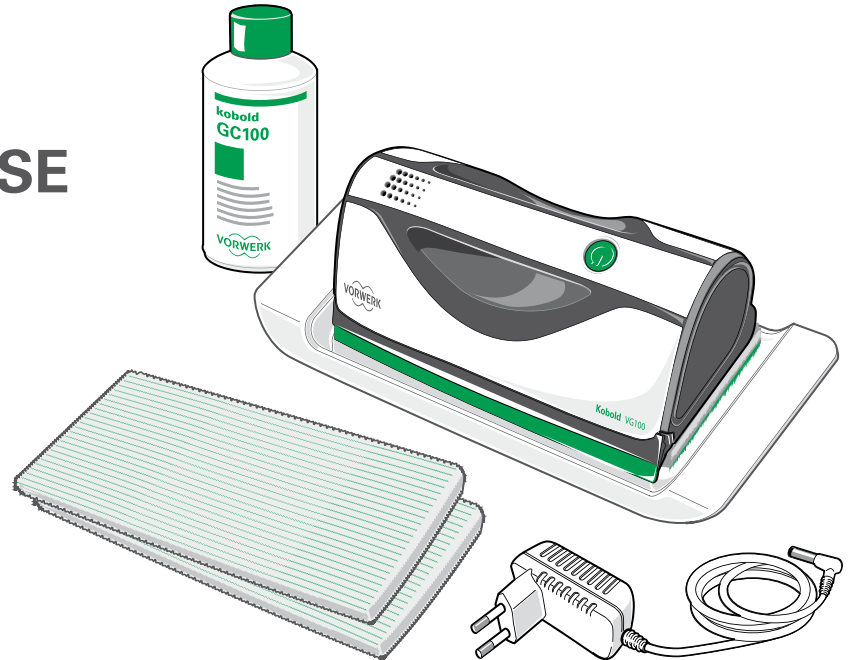


---

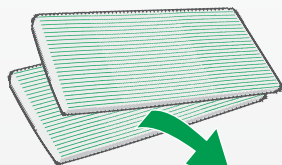
**kobold**

**INSTRUCTIONS FOR USE**  
**KOBOLD VG100**  
**WINDOW CLEANER**



## QUICK START

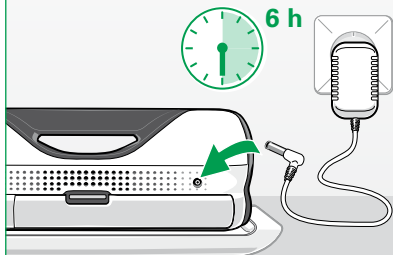
01



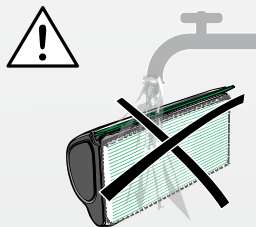
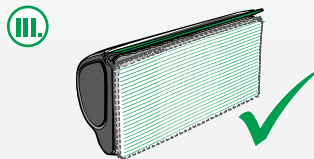
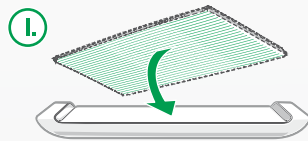
30 – 60 °C



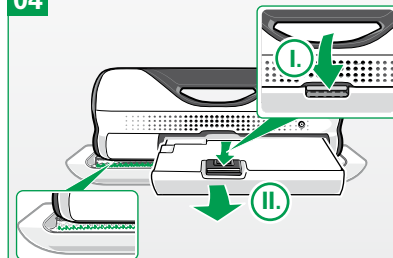
02



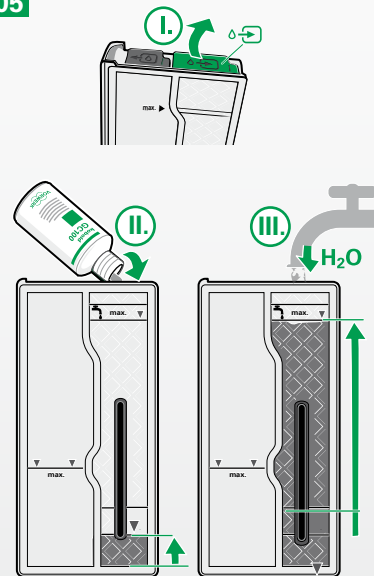
03



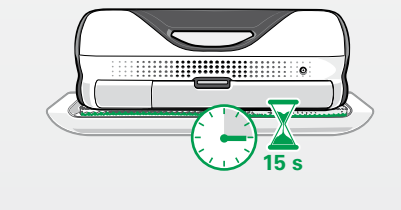
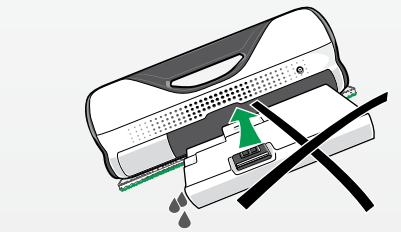
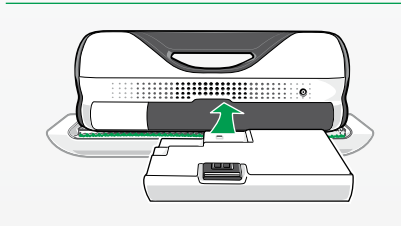
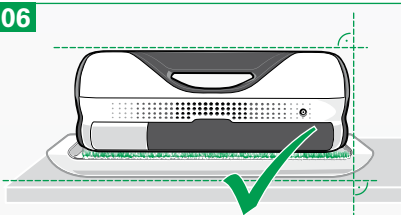
04



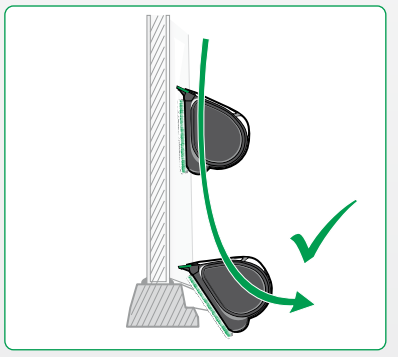
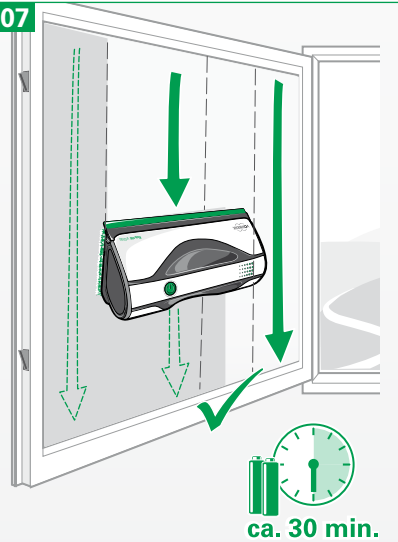
05



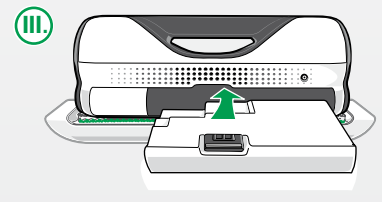
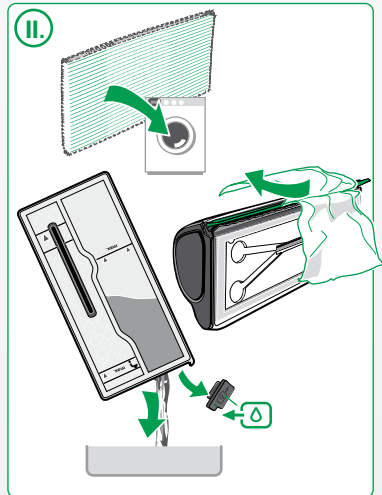
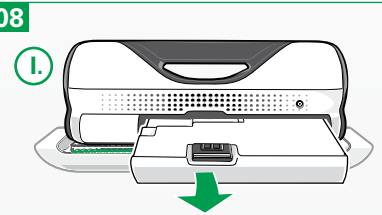
06




07



08



## CONTENT

<b>1</b>	<b>For your safety</b> 	<b>8</b>
1.1	Intended use and application . . . . .	8
1.2	Hazard levels . . . . .	9
1.3	Hazard notices . . . . .	10
<b>2</b>	<b>Preparation</b> . . . . .	<b>14</b>
2.1	Charging the batteries . . . . .	14
2.2	Washing the MF100 microfibre cloth . . . . .	15
2.3	Applying the MF100 microfibre cloth . . . . .	16
<b>3</b>	<b>Operation</b> . . . . .	<b>17</b>
3.1	Switching on the window cleaner . . . . .	17
3.2	Function display . . . . .	18
3.3	Switching off the Kobold VG100 window cleaner . . . . .	19
3.4	Filling the fresh water tank . . . . .	19
3.5	Using Kobold GC100 glass cleaner concentrate . . . . .	20
3.6	Inserting the water tank . . . . .	22
3.7	Cleaning windows . . . . .	23
3.8	Emptying the dirty water tank . . . . .	26
<b>4</b>	<b>Storing the window cleaner</b> . . . . .	<b>27</b>
<b>5</b>	<b>Maintenance</b> . . . . .	<b>28</b>
5.1	Washing the MF100 microfibre cloth . . . . .	28
5.2	Cleaning the rubber lip . . . . .	28
5.3	Turning or replacing the rubber lip . . . . .	29
<b>6</b>	<b>Troubleshooting</b> . . . . .	<b>30</b>
<b>7</b>	<b>Disposal and environmental protection</b> . . . . .	<b>33</b>
7.1	Disposing of the window cleaner . . . . .	33
7.2	Information for disposal of the battery . . . . .	33
7.3	Disposing of the packaging . . . . .	35
7.4	Environmental protection information . . . . .	35
<b>8</b>	<b>Warranty</b> . . . . .	<b>37</b>
<b>9</b>	<b>Service</b> . . . . .	<b>37</b>
<b>10</b>	<b>Technical data</b> . . . . .	<b>38</b>

## PRELIMINARY REMARKS

Congratulations on your purchase of the Kobold VG100 window cleaner. It will be a reliable helper in your household, making window cleaning easier for you.

The window cleaner is an innovative solution for cleaning glass windows. It combines all of the steps for conventional window cleaning in just one process. This allows you to clean your windows quickly, easily and thoroughly.

## BEFORE YOU START

- Read the user manual attentively before using the window cleaner for the first time.
- Retain the user manual for future reference. It is an important part of the window cleaner and must be included with the product if you make it available to other persons for use and also for disposal.

## SIGNS AND SYMBOLS

You will find the symbols below in the text, with the following meanings:



Warning symbol



Reference to Vorwerk Customer Service/Support



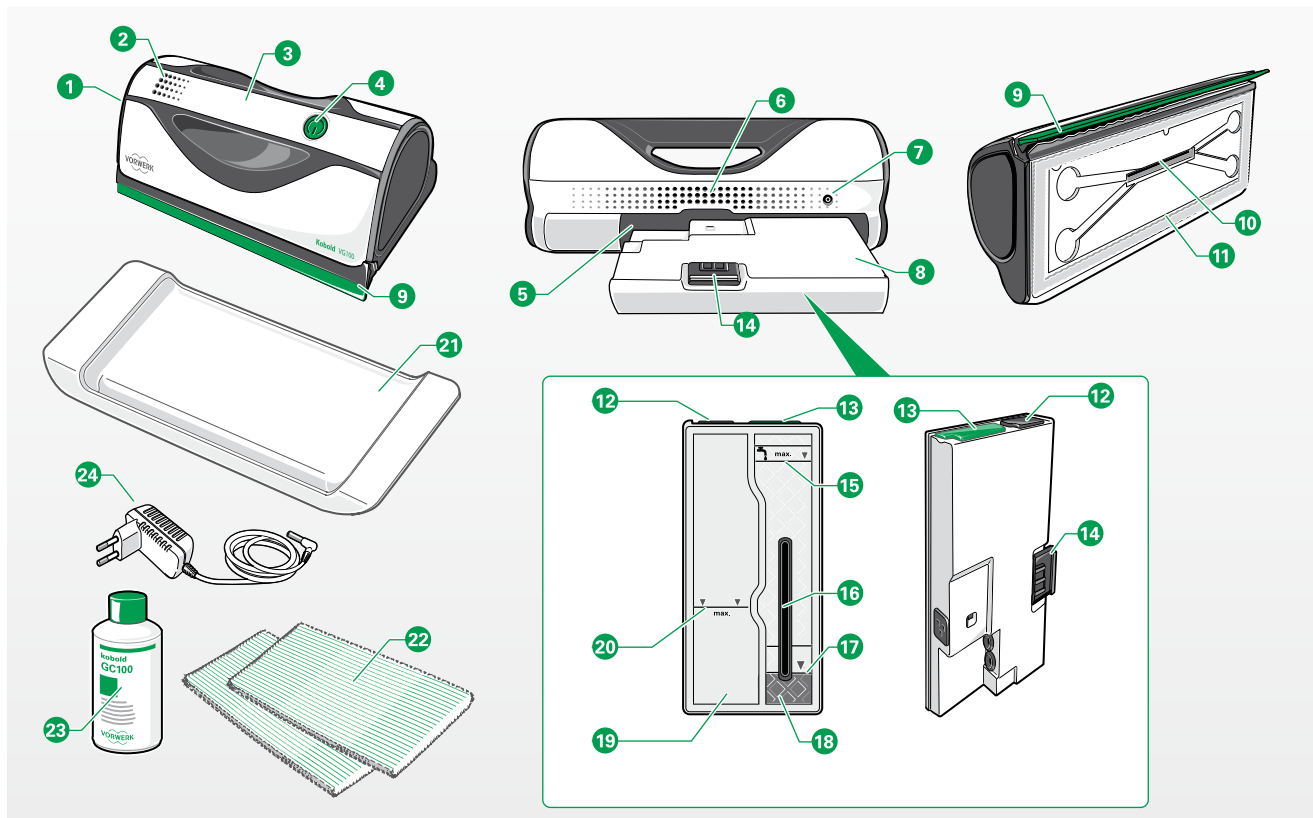
Symbol for a tip



Reference to the Vorwerk website

- Instruction

## PRODUCT OVERVIEW



## LEGEND

1	Kobold VG100 window cleaner
2	LED function display
3	Handle
4	On/off switch
5	Tank compartment
6	Ventilation opening
7	Charging receptacle
8	Water tank, removable
9	Rubber lip
10	Water discharge opening
11	Hook-and-loop attachment for microfibre cloth
12	Dirty water tank closure (grey)
13	Fresh water tank closure (green)
14	Lock/unlock button
15	Fill level marking (max.)
16	Water discharge opening
17	Fill level marking (max.) for GC100 concentrate

18	Fresh water tank
19	Dirty water tank
20	Marking (max.) for dirty water
21	Tray
22	MF100 microfibre cloth
23	Kobold GC100 glass cleaner concentrate
24	Mains charger

## 1 FOR YOUR SAFETY ⚠

The greatest possible safety is a characteristic of Vorwerk products. However, the product safety of the Kobold VG100 window cleaner can only be assured if you observe the information in this section.

### 1.1 Intended use and application

#### Note!

This device can be used by children aged 8 years and older and by persons with reduced physical, sensory or mental capabilities or a lack of experience and/or knowledge, provided that they are supervised, have been instructed in the safe use of the device and have understood the resulting hazards. Children must not be permitted to play with the device. Cleaning and user maintenance may not be performed by children without supervision.

Children must not use the device on open windows or in other situations where there is a risk of falling.

Risk of falling: Adequate personal safety must be assured during use (especially on open windows).

Only use the window cleaner for the cleaning and care of dry, smooth, flat and untreated glass surfaces. It is suitable for window glass, mirrors and glass conservatories.

**It is not suitable for uneven, rounded, arched, matte or textured surfaces e. g. windscreens in cars, frosted glass in bathrooms, glass with ornaments). It is also not suited for glass with special features (e.g. lotus effect) and synthetic surfaces (e.g. Plexiglas, monitors, televisions).**



**The Kobold VG100 window cleaner is intended exclusively for household and home use. Vorwerk assumes no liability in case of improper use or failure to observe the information in the user manual.**



## 1.2 Hazard levels

- For your safety, also observe the hazard notices in the text of the sections that follow.

The hazard notices in the following sections are identified by the warning symbol and/or a signal word indicating a hazard level:

Hazard level	Warning symbol	Signal word	Possible hazards
3		<b>Warning!</b>	- Risk of electric shock - Risk of fire - Explosion hazard
2		<b>Caution!</b>	- Risk of injury
1		<b>Note!</b>	- Risk of damage due to improper use - Property damage due to improper use

### 1.3 Hazard notices

The Kobold VG100 window cleaner meets the safety regulations of the country where it was distributed by an authorised Vorwerk organisation. If the window cleaner is used in a different country, compliance with local safety regulations cannot be guaranteed. Therefore, Vorwerk assumes no liability for the resulting safety risks for the user.

---

#### Note!

- Read the user manual attentively before using the window cleaner for the first time.
  - Observe the information below in particular.
  - Retain the user manual for future reference. It is an important part of the window cleaner and must be included with the product if you make it available to other persons.
- 

#### Warning! Risk of electric shock!

Prior to all cleaning and maintenance work on the device, switch off the window cleaner and disconnect the mains charger from the outlet.

- Never attempt to repair the window cleaner yourself. We recommend having repairs carried out exclusively by your authorised Vorwerk Customer Service Centre.
  - Do not insert any sharp objects into the electrical contacts.
  - Do not modify the contacts.
  - Do not operate the window cleaner if it is damaged or if the mains charger is defective.
  - In case of damage, contact your nearest Vorwerk Customer Service Centre if you want to continue using the Kobold VG100 window cleaner.
  - Do not use the window cleaner if it is damaged or has fallen on the floor and exhibits visible signs of damage or malfunction.
-

---

**Warning! Explosion hazard!**

- Do not vacuum up explosive or readily inflammable substances.
  - Never throw the window cleaner into an open fire.
- 

**Warning! Risk of fire!**

- Never vacuum up hot ashes with the window cleaner.
- 

**Note! Health hazard due to improper use of the concentrate!**

**Information for the safe use of cleaning agents:**

- Only use the Kobold GC100 glass cleaner concentrate in dilution.
- Read the user manual attentively before using the glass cleaner concentrate for the first time.
- Store the glass cleaner concentrate out of reach of children.
- Avoid contact with the eyes. In case of contact with the eyes, rinse them thoroughly with water!
- Do not swallow the glass cleaner concentrate. If the glass cleaner concentrate is swallowed, consult a doctor!

**Ingredients of the glass cleaner concentrate:** < 5% anionic and nonionic tensides, polymers, perfume, methylisothiazolinone, benzyisothiazolinon.

---

**Note! Risk of damage to the Kobold VG100 window cleaner due to improper use!**

Prior to all cleaning and maintenance work on the device, switch off the window cleaner and disconnect the mains charger from the outlet.

- Never disconnect the mains charger from the outlet by pulling on the connecting cable. Always grasp the plug.

- Only use the window cleaner to vacuum the surface that has been wetted with the cleaning solution.
- Never use the window cleaner on surfaces that are already wet or in order to vacuum up liquids other than those applied by the device.
- Never immerse the window cleaner in water or other liquids.
- Do not use the window cleaner as a vacuum cleaner for picking up solid particles such as crumbs.
- Pronounced dripping may occur if the window cleaner is used improperly. As a precaution, remove items underneath the window.
- Never clean the window cleaner or mains charger with water or wet cleaners.
- Before putting the window cleaner into operation, verify that the voltage specified on the window cleaner corresponds to the local mains voltage.
- We recommend the use of original Vorwerk products.
- To charge the window cleaner, only use alternate current and an outlet that has been properly installed by a specialist.
- Only use the Kobold VG100 window cleaner and accompanying mains charger with the alternate current voltage specified on the type plate.
- Do not use the window cleaner and mains charger if they show visible signs of damage.
- Only charge the window cleaner with the included mains charger.
- Do not store the window cleaner outdoors; keep it protected against moisture.
- Do not set up the window cleaner near a heat source (stove, heater or warm radiator).
- Switch off the window cleaner after each use.
- Do not block the ventilation openings during use under any circumstances.
- Switch off the window cleaner prior to charging.
- Use the window cleaner exclusively with the water tank installed.

- Charge and use the window cleaner at temperatures between 5 °C and 35 °C.
  - Store the window cleaner at temperatures between 5 °C and 35 °C.
  - The batteries in the window cleaner are not removable. Do not attempt to remove and replace them with others.
  - Never short-circuit the batteries!
  - Do not expose the window cleaner and/or the batteries to fire, heat or direct sunlight.
- 

**Note! Damage to the surface being cleaned due to dirty microfibre cloths.**

- In order to avoid damaging the surfaces being cleaned, do not use heavily soiled microfibre cloths with foreign objects.
  - Examine the microfibre cloth for solid foreign objects prior to each use in order to exclude damage to the surface being cleaned.
-

## 2 PREPARATION

Before you can use the Kobold VG100 window cleaner, some preparations are required.

### 2.1 Charging the batteries

Before you begin charging the batteries, ensure that the window cleaner is centered on the tray, otherwise the rubber lip can be damaged due to deformation (see Fig. 2.4 on page 16).

The batteries have to be fully charged prior to first use. This process takes about 6 hours.

- Connect the mains charger to the mains network.
- Note the prescribed voltage of 220 V - 240 V.
- Connect the mains charger to the charging receptacle on the window cleaner.
- Ensure that the plug is fully inserted!

During the charging process, the charge level indicator pulsates according to the current charge level. The display is divided into 3 charge levels (see Section “3.2 Function display” on page 18).

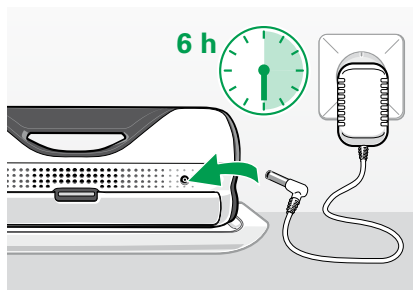


Fig. 2.1 Charging the batteries

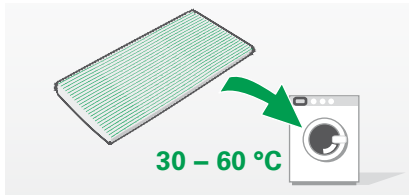


Fig. 2.2 Washing the microfibre cloth

## 2.2 Washing the MF100 microfibre cloth

---

**Note! Damage to the surface being cleaned due to dirty microfibre cloths.**

- In order to avoid damaging the surfaces being cleaned, do not use heavily soiled microfibre cloths with foreign objects.
  - Examine the microfibre cloth for solid foreign objects prior to each use in order to exclude damage to the surface being cleaned.
- 

Wash the supplied microfibre cloths prior to first use in order to achieve good water distribution and optimum cleaning results.

- Remove the microfibre cloths from the packaging.
- Wash the microfibre cloths **without softener and bleach** in the washing machine at 60 °C max. Allow the microfibre cloths to dry. Drying in a clothes drier is possible.

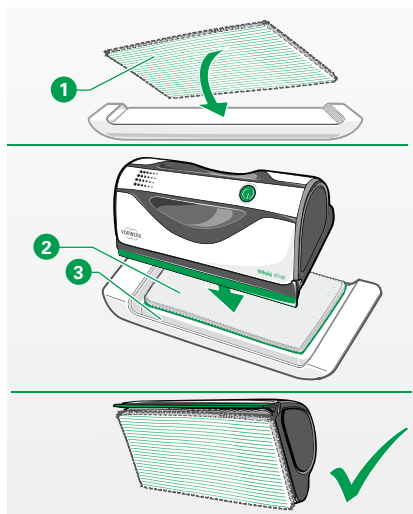


Fig. 2.3 Applying the microfibre cloth

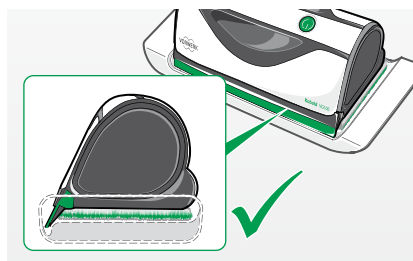


Fig. 2.4 Setting down the window cleaner

## 2.3 Applying the MF100 microfibre cloth

- Lay the microfibre cloth with the cleaning surface **1** onto the tray so that it is flush with the edges of the support surface.
  - Position the Kobold VG100 window cleaner on the microfibre cloth **2**. First only hold it tilted with its back against the rear edge of the supporting surface on the tray.
  - Then tip the window cleaner forward until the rubber lip is in the recess of the tray **3**.
  - Lift up the window cleaner and check if the microfibre cloth is attached straight and flush. The rubber lip must not be covered by the microfibre cloth.
- Always position the window cleaner so that it is centered on the platform provided on the base.
- Ensure that the microfibre cloth is properly attached.
  - The rubber lip should project into the recess provided.



If the window cleaner is set down incorrectly for a long time, the rubber lip may be damaged.



### 3 OPERATION

The section that follows contains information about the functions and operation of the Kobold VG100 window cleaner.



#### **Warning! Risk of electric shock!**

- Never use the window cleaner to vacuum up water already on the surface, other liquids or readily inflammable substances.
- Never immerse the window cleaner in water or other liquids.



#### **Explosion hazard!**

- Do not vacuum up explosive or readily inflammable substances.
  - Never throw the window cleaner into an open fire.
- 

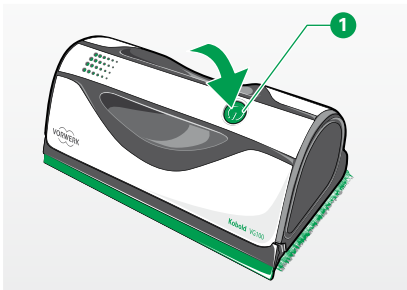


Fig. 3.1 Switching the Kobold VG100 window cleaner on and off

#### 3.1 Switching on the window cleaner

- Press the on/off switch **1** to switch on the window cleaner. The function display lights up continuously according to the battery charge level (see Section “3.2 Function display” on page 18).

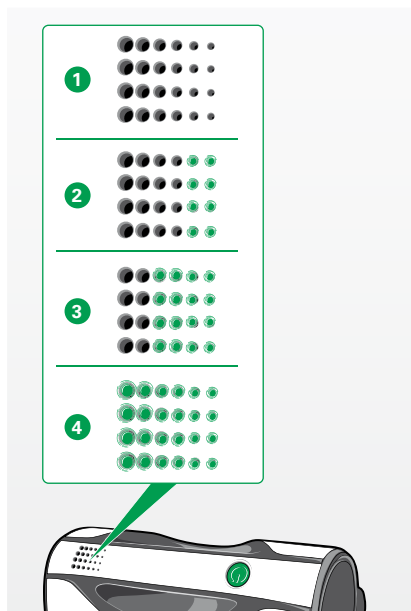


Fig. 3.2 Function display

## 3.2 Function display

The function display is the operating and charge level indicator of the Kobold VG100 window cleaner. The display is divided into 3 horizontal status fields that correspond to the charge level (see Figure 3.2).


Function display	Status
1 Function display	turned off
4 Function display	turned on
4 Brief short flashing upon pressing the on/off switch	Battery charge level too low, please charge the batteries
1, 2, 3, 4  Function display pulsating	Charging process in progress
1 Function display off (with mains charger connected)	Charging process complete, batteries fully charged
3 Centre and right-hand LED rows lit up	Medium battery charge level
2 The two right-hand LED rows are lit up	Low battery charge level
1 No LEDs light up after pressing the on/off switch (function display off)	No battery output, battery is drained



Fig. 3.3 Switching off the window cleaner

### 3.3 Switching off the Kobold VG100 window cleaner

- Press the on/off switch **1** to switch off the window cleaner. The function display turns off.

### 3.4 Filling the fresh water tank

Before using the window cleaner, the fresh water tank must be filled with fresh water and Kobold GC100 glass cleaner concentrate. Note the “max.” level marked on the tank (see Point 4 in Fig. 3.6 on page 20).

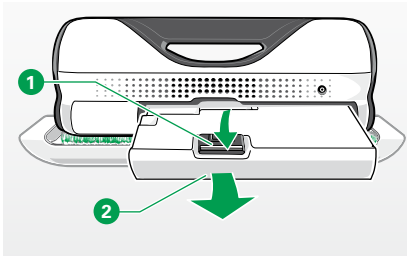


Fig. 3.4 Pulling out the tank



#### Explosion hazard!

- Never add explosive or readily inflammable substances to the fresh water tank.



We recommend the exclusive use of Kobold GC100 glass cleaner concentrate from Vorwerk for streak-free cleaning results (see Section “3.5 Using Kobold GC100 glass cleaner concentrate” on page 20)!



Fig. 3.5 Opening the fresh water tank

- Press down and hold the unlock button on the back of the window cleaner **1**.
- Pull the tank out entirely to the rear **2**.
- Rotate the tank so that both tank openings are facing up.
- Open the fresh water tank by pulling the **green** rubber closure up.

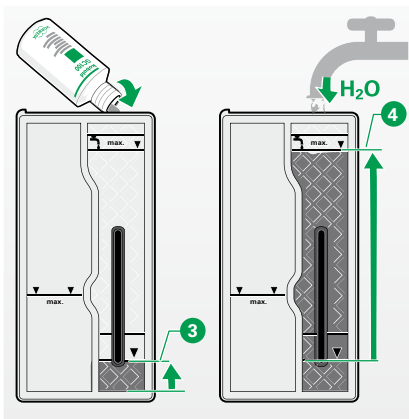


Fig. 3.6 Filling the fresh water tank

- First add the Kobold GC100 glass cleaner concentrate in the specified volume according to the marking (Fig. 3.6) **3**. In order to do so, set the opening of the glass cleaner concentrate bottle against the spout of the fresh water tank.
- **Note the marking for the maximum fill level for the correct dosage of the glass cleaner concentrate **3**.**
- Then fill the tank up with water. Once again, note the maximum allowable fill level **4**.
- Finally, close the tank with the rubber closure and shake the tank once to mix in the glass cleaner concentrate.

---

**Note! Health hazard due to improper use of the concentrate! Information for the safe handling of cleaning agents:**

- Do not swallow the cleaning agent. If the cleaning agent is swallowed, consult a doctor!
  - Store the cleaning agent out of reach of children!
  - Avoid contact with the eyes. In case of contact with the eyes, rinse them thoroughly with water!
- 

### 3.5 Using Kobold GC100 glass cleaner concentrate



We recommend the exclusive use of Kobold GC100 glass cleaner concentrate from Vorwerk for streak-free cleaning results!



Fig. 3.7 Kobold GC100 glass cleaner concentrate

The glass cleaner concentrate must be diluted with water in a 1:16 ratio. The mixing ratio in the tank is approx. 5 ml concentrate and approx. 80 ml water. Only use cleaning solutions that correspond to this ratio. **Note the markings for the maximum fill levels ③ (Fig. 3.6 on page 20) for correct dosage of the Kobold GC100 glass cleaner concentrate.** The special formulation of the glass cleaner concentrate permits the rapid, even distribution of the cleaning agent and full absorption by the MF100 microfibre cloth within a few seconds. Furthermore, the glass cleaner concentrate contains high-performance tensides that result in adequate wetting of the surface being cleaned, even with a short contact time. Foaming is minimised, which permits easy vacuuming of the surface with the window cleaner. The window cleaner glides easily over the surface being cleaned, without squeaking. Thanks to the unique combination of tensides, the treated surfaces dry streak-free. The tenside combination means that volatile solvents do not have to be used. This means the room air is not contaminated by solvent vapours and skin friendliness is improved.

---

**Note! Health hazard due to improper use of the concentrate!**  
**Information for the safe handling of cleaning agents:**

- Do not swallow the glass cleaner concentrate . If the glass cleaner concentrate is swallowed, consult a doctor!
- Store the glass cleaner concentrate out of reach of children!
- Avoid contact with the eyes. If the glass cleaner concentrate gets into the eyes, rinse them thoroughly with water!

**Ingredients of the glass cleaner concentrate:** < 5% anionic and non-ionic tensides, polymers, perfume, methylisothiazolinone, benzyloisothiazolinon.

---

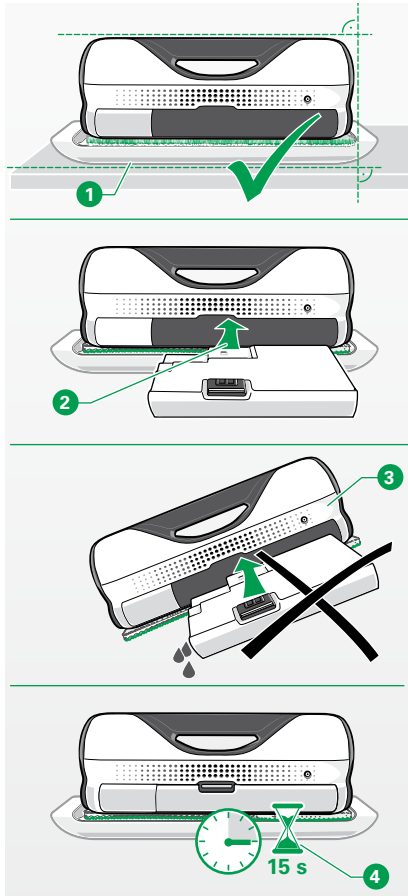


Fig. 3.8 Inserting the tank

### 3.6 Inserting the water tank

After adding the cleaning solution (Kobold GC100 glass cleaner concentrate and fresh water) and/or emptying the dirty water tank, insert the tank back into the Kobold VG100 window cleaner.

- Attach the MF100 microfibre cloth to the window cleaner (see Section “2.3 Applying the MF100 microfibre cloth” on page 16) and check whether the microfibre cloth is properly attached to the window cleaner before you insert the tank.
- Set the window cleaner with the attached microfibre cloth horizontally onto the tray so that the rubber lip is in the recess in the tray **1**.
- Insert the tank into the compartment **2**. Slide the tank into the window cleaner along the guides until the lock/unlock button engages audibly (with a “click”).

**The tank empties completely as soon as it has engaged in the compartment. The cleaning fluid that is released is dispersed evenly over the microfibre cloth.**

- Do not hold the window cleaner at an angle **3** or vertically while inserting the tank. **Otherwise the window cleaner will drip and the microfibre cloth is not evenly moistened with the cleaning solution.**
- After inserting the tank, wait about 15 seconds **4**. During the 15 seconds, set the window cleaner onto the horizontally positioned tray. Otherwise the cleaning solution will not be distributed evenly and correctly on the microfibre cloth!

After 15 seconds, the microfibre cloth is soaked with the cleaning solution and ready for use.

### 3.7 Cleaning windows

The section that follows provides more information about cleaning windows with your Kobold VG100 window cleaner.

---

**Note! Damage to the window cleaner due to improper use.**

- Do not use the window cleaner as a vacuum cleaner for vacuuming up solid substances (e. g. dust or crumbs).
- Do not use the window cleaner to vacuum up liquids other than those applied by the device (see Section “1.1 Intended use and application” on page 8)

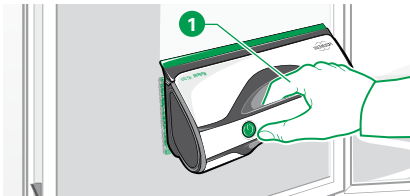


Fig. 3.9 Handle

- 
- Take the window cleaner by the handle (Fig. 3.9) ①.
  - Switch on the window cleaner.
  - Apply the window cleaner to the top corner of the window.

**Warning! Risk of injury if the window cleaner is dropped.**

- Ensure that the window cleaner does not fall down during the cleaning process, endangering you or other persons.
- Take precautions to protect yourself and other persons in case the window cleaner falls (for example from an upper storey).

**Warning! Risk of falling.**

- There is a risk of falling while cleaning windows. Ensure you have adequate support and protect yourself against falling during the cleaning process!
-

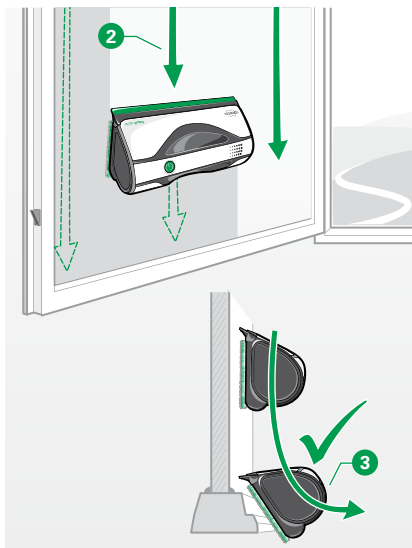


Fig. 3.10 Using the window cleaner correctly



Fig. 3.11 Improper use

- Slowly and with slight pressure, draw the Kobold VG100 window cleaner down to the bottom edge of the window in straight lines **2**. Please note: the rubber lip has to be drawn to the bottom of the glass pane and then lifted off the window with a slight tilting movement **3**. Only then is complete cleaning with the removal of all water possible.
- Continue cleaning the window as described (moving across to left or right) until the entire glass is cleaned.

- i** Before using the window cleaner, remove any coarse dirt from the surface being cleaned.
- i** Avoid meandering movements while cleaning. Such an approach impairs the cleaning quality (Fig. 3.11).
- i** We recommend cleaning the sealing lips with a cloth.

After being cleaned with the window cleaner, your windows are clean and dry.

- i** If the cleaning quality decreases, the cleaning concentrate and water are used up, the MF100 microfibre cloth is dirty and/or the rubber lip is very dirty. Signs for decreasing cleaning quality are incomplete cleaning and/or inadequate wetting of the window pane during cleaning.



Proceed as follows to restore the cleaning quality:

- Clean or replace the rubber lip (see Section “5.2 Cleaning the rubber lip” on page 28, Section “5.3 Turning or replacing the rubber lip” on page 29).
- Replace the MF100 microfibre cloth (see Section “2.3 Applying the MF100 microfibre cloth” on page 16).
- Remove the tank to empty out the dirty water.
- Refill the tank with Kobold GC100 glass cleaner concentrate and water (see Section “3.4 Filling the fresh water tank” on page 19).
- Set the Kobold VG100 window cleaner onto the horizontally positioned tray.
- Reinsert the tank in the window cleaner (see Section “3.6 Inserting the water tank” on page 22) to wet the microfibre cloth again.



Pronounced dripping, smearing, streaking and/or the accumulation of dirt may occur if the window cleaner is used improperly.

---

**Note! Damage to items sensitive to water due to improper use.**

- Pronounced dripping may occur if the window cleaner is used improperly. As a precaution, remove items underneath the window.
-

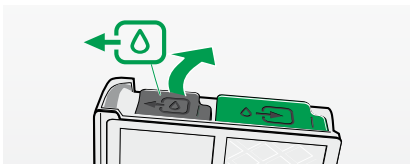


Fig. 3.12 Opening the dirty water tank

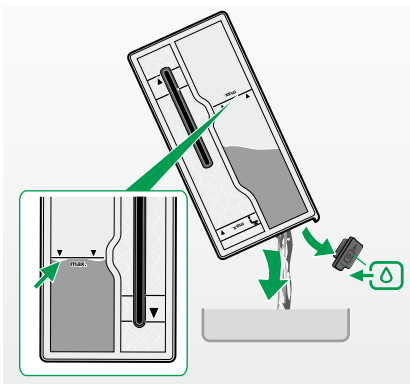


Fig. 3.13 Emptying the dirty water tank

### 3.8 Emptying the dirty water tank

The dirty water taken up during the cleaning process is collected in a special dirty water tank.

**i** The dirty water tank has to be emptied when it reaches the maximum fill level. Empty the dirty water tank every time the tank is removed (see Fig. 3.13).

- Remove the tank as described in Section “3.4 Filling the fresh water tank” on page 19.
- Rotate the tank so that both tank openings are facing up.
- Open the tank by pulling the **grey** rubber closure up.
- Pour out the dirty water from the container.
- Rinse the dirty water tank with fresh water and empty the tank again.
- Close the dirty water tank again with the closure provided.

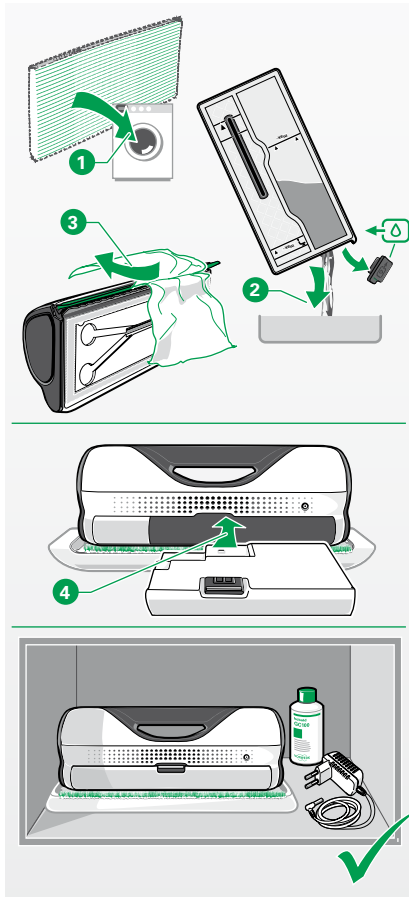


Fig. 4.1 Storing the window cleaner

## 4 STORING THE WINDOW CLEANER

Store your Kobold VG100 window cleaner correctly and clean it after every use.

- Remove, wash and dry the MF100 microfiber cloth **1**.
- Remove the tank as described in Section “3.4 Filling the fresh water tank” on page 19.
- Empty the dirty water from the tank **2**.
- **Rinse the dirty water tank with fresh water to avoid the formation of odours and to prevent cleaning residue from drying on.**
- **Allow the tank to dry in order to avoid the development of mould.**
- Clean the rubber lip (see Section “5.2 Cleaning the rubber lip” on page 28) **3**.
- Attach the microfiber cloth to the window cleaner again once it has dried completely.
- Insert the tank in the window cleaner **4** once it is completely dry.
- Place the window cleaner on the tray for storage.
- While it is in storage, do not connect your window cleaner to the mains network with the mains charger in order to avoid wasting electricity.

## 5 MAINTENANCE

For the optimum functionality of your Kobold VG100 window cleaner, you should clean it regularly. Adhering dirt can be removed from the window cleaner with minimum effort.

In the steps that follow, you will learn how to clean the window cleaner.

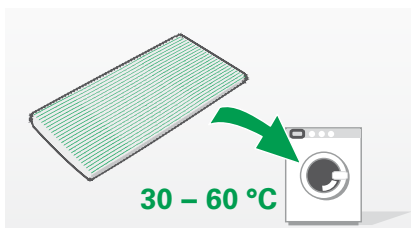


Fig. 5.1 Washing the microfibre cloth

### 5.1 Washing the MF100 microfibre cloth

Clean the microfibre cloth regularly.

- Wash the microfibre cloth **without softener and bleach** in the washing machine at 60 °C max..
- Allow the microfibre cloth to dry (may also be dried in a clothes drier).

---

**Note! Damage to the microfibre cloth due to improper cleaning.**

- Do not use fabric softener or similar substances for cleaning.
  - Do not use bleach for cleaning.
- 

### 5.2 Cleaning the rubber lip

In the course of using the window cleaner, particles of dirt can accumulate on the rubber lip and in the space between the upper green rubber lip and the lower black lip. This can impair the performance of the Kobold VG100 window cleaner.

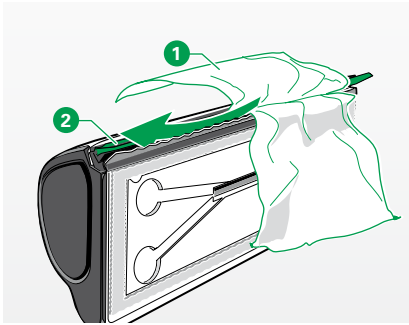


Fig. 5.2 Cleaning the rubber lip

Decreasing cleaning quality is the result. Therefore you should clean both lips and the space between them regularly:

- Pull apart the two lips.
- Wipe the rubber lip with a damp, lint-free cloth **1**.
- Remove foreign objects from the space between the lips **2**.

### 5.3 Turning or replacing the rubber lip

Hard, sharp particles of dirt or other mechanical impacts may damage the rubber lip during the cleaning process. This leads to streaking and smearing. In this case, you can turn the green rubber lip over and continue using the other side if it is undamaged. Otherwise the rubber lip has to be replaced.

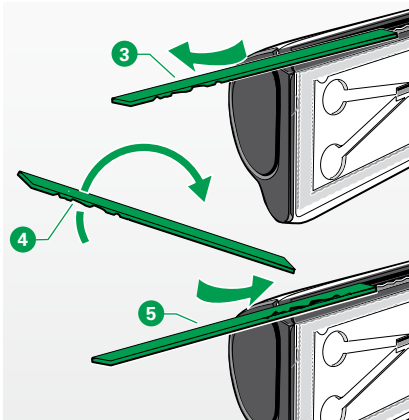


Fig. 5.3 Turning or replacing the rubber lips

- Pull the green, damaged rubber lip out of the mounting groove to the side **3**.
- Clean the rubber lip (see Section “5.2 Cleaning the rubber lip” on page 28) and perform a visual inspection for possible damage.
- The rubber lip can be used on both sides. Turn the rubber lip over (see Fig. 5.3) if one side of the rubber lip is damaged **4**.
- Insert the rubber lip back into the mounting groove so that the undamaged side of the rubber lip is available for the cleaning process **5**.
- If the rubber lip has severe mechanical damage on both sides, you have to replace the rubber lip with a new one. Contact Customer Service for a replacement.

## 6 TROUBLESHOOTING



### Warning! Risk of electric shock and injury!

- Never attempt to repair your Kobold VG100 window cleaner yourself. We recommend having repairs to electric appliances carried out exclusively by your authorised Vorwerk Customer Service Centre.

If your window cleaner is not working properly, this may be due to the following reasons:

Malfunction	Possible cause and elimination
<p>The Kobold VG100 window cleaner cannot be switched on.</p>	<p>The batteries may be drained.</p> <ul style="list-style-type: none"> <li>• Charge the window cleaner.</li> </ul> <p>The window cleaner was not charged correctly.</p> <ul style="list-style-type: none"> <li>• Ensure that the mains charger is connected to the window cleaner and an outlet. (The function display pulsates and shows that the window cleaner is being charged.)</li> </ul> <p>The contact points on the jack of the window cleaner may be dirty.</p> <ul style="list-style-type: none"> <li>• Clean the contact points with a dry cloth.</li> </ul> <p>The window cleaner may have been switched on during the charging process.</p> <ul style="list-style-type: none"> <li>• Ensure that the window cleaner is switched off while charging.</li> </ul>

Malfunction	Possible cause and elimination
<p>Poor cleaning results</p>	<p>The opening between the rubber lips is plugged/dirty.</p> <ul style="list-style-type: none"> <li>• Clean the space between the rubber lips.</li> </ul> <p>Smearing and streaking during the cleaning process.</p> <ul style="list-style-type: none"> <li>• Clean the rubber lip.</li> <li>• Pull the rubber lip out to the side.</li> <li>• Perform a visual inspection for possible damage.</li> <li>• Turn the rubber lip over if damage can be seen on one side only.</li> <li>• Reinsert the rubber lip and use the undamaged side.</li> <li>• Replace the rubber lip if it has visible damage on both sides.</li> </ul> <p>The cloth has to be replaced.</p> <ul style="list-style-type: none"> <li>• Replace the MF100 microfibre cloth.</li> </ul> <p>The dirty water tank has to be emptied.</p> <ul style="list-style-type: none"> <li>• Remove and empty the dirty water tank.</li> </ul> <p>The cleaning solution has been used up.</p> <ul style="list-style-type: none"> <li>• Fill the fresh water tank with Kobold GC100 glass cleaner concentrate and fresh water.</li> <li>• Attach the microfibre cloth to the window cleaner.</li> <li>• Set the Kobold VG100 window cleaner onto the horizontally positioned tray.</li> <li>• Insert the fresh water tank into the Kobold VG100 window cleaner.</li> </ul>

Malfunction	Possible cause and elimination
<p>Poor cleaning results</p>	<p>The dosage of the Kobold GC glass cleaner concentrate is not correct.</p> <ul style="list-style-type: none"> <li>• Add the glass cleaner concentrate according to the specified dosage. In doing so, note the marking for the fill level of the glass cleaner concentrate on the fresh water tank.</li> </ul> <p>The water outlet on the lower side of the Kobold VG100 window cleaner is plugged.</p> <ul style="list-style-type: none"> <li>• Remove any foreign objects from the opening.</li> </ul>
<p>Water is running out</p>	<p>The openings of the water tank are not properly closed.</p> <ul style="list-style-type: none"> <li>• Check whether the rubber closures on the fresh and/or dirty water tanks are installed correctly.</li> </ul> <p>The window cleaner is/was tilted or held vertically while inserting the tank.</p> <ul style="list-style-type: none"> <li>• While inserting the tank, position the window cleaner horizontally on the tray.</li> </ul> <p>The dirty water tank is full.</p> <ul style="list-style-type: none"> <li>• Empty the dirty water tank.</li> </ul> <p>The water tank is not inserted correctly.</p> <ul style="list-style-type: none"> <li>• The lock/unlock button has to engage audibly (with a “click”).</li> </ul>



If the faults cannot be eliminated, contact Vorwerk Customer Service (see Section “9 Service” on page 37).





## 7 DISPOSAL AND ENVIRONMENTAL PROTECTION

### 7.1 Disposing of the window cleaner

As the owner of an electrical appliance or electronic device, you (under Directive 2012/19/EC of the European Parliament and Council of 4 July 2012 on electric and electronic devices, and the Electrics and Electronics Act of 16 March 2005) are not permitted to dispose of the Kobold VG100 window cleaner or its electrical/electronic accessories in unsorted household garbage.

- Use the return options provided free of charge instead.
- Contact your city or municipal administration for more information.
- You can also hand the window cleaner over to Vorwerk Customer Service.

### 7.2 Information for disposal of the battery



The following information is intended for the disposer of your Kobold VG100 window cleaner, not for you as the user!

The integrated lithium-ion batteries contain substances that may be harmful to the environment. Before scrapping the window cleaner, the batteries must be removed from the device and brought to a battery collection centre.

- Only remove the batteries when they are fully drained. The batteries must not come into contact with metal under any circumstances.

**Caution! Risk of injury due to battery leakage!**

Leaking batteries must not come into contact with the eyes and mucous membranes.

- Wash your hands and rinse the eyes with clear water. If you continue to have complaints, consult a doctor.
- 

**REMOVING THE BATTERIES FROM THE WINDOW CLEANER**

**The following information is intended for the disposer of your Kobold VG100 window cleaner, not for you as the user!**

- Disconnect the Kobold VG100 window cleaner from the mains charger.
- Allow the motor of the window cleaner to run until it stops.
- Check whether the batteries really are fully drained by attempting to switch on the window cleaner again. If the motor starts, repeat the entire process.
- Open the window cleaner and remove the cover.
- Remove the screws.
- Remove the side cover and hood so that the batteries are freely accessible.
- Cut each connecting wire separately and remove the batteries (risk of short circuit).

### 7.3 Disposing of the packaging

The packaging is an important part of our product. It protects our device against damage during transportation and reduces the risk of device damage. Therefore we cannot eliminate the packaging. In case you have to bring or send your Kobold VG100 window cleaner for service or to Customer Service during or also after the warranty period, the original packaging provides the best protection against transport damage. Use the original packaging for transportation.

If you want to dispose of the packaging anyway, you may do so at any time and with no restrictions through your regional facilities (waste paper bin, yellow bin, recycling depot, waste paper collection point etc.).

Vorwerk commissions legally authorised licensors for this purpose. In case of enquiries, please contact your authorised Service Centre.



### 7.4 Environmental protection information

Conserving nature and protecting the environment: Environmental protection is an important company objective for Vorwerk.

#### LESS PACKAGING

We use only environmentally friendly material that is reused with proper disposal. Even during development, we help avoid packaging waste and are committed to its disposal and recycling.

**SAVING ENERGY**

Vorwerk products protect the environment: Low consumption of water and cleaning agents with high cleaning performance.

**ENVIRONMENTALLY FRIENDLY PRODUCTION**

We place great emphasis on protecting the environment in the production of our products. We use recyclable plastics and paints. Environmentally hazardous flame retardants were purposefully not used.

For our filter bags, we use adhesives that are free of solvents, unbleached paper or safe plastics. Our instructions for use are made of materials that come from sustainable forestry operations and are bleached without the use of chlorine.

**RECYCLABLE MATERIAL**

The material in our products is almost entirely recyclable. We largely eliminate the use of PVC.

In the design of our products, we strive to use “homogenous” material: The substances that are used can later be separated into pure materials by modern facilities without excessive energy consumption. For even easier recycling, we have marked most of our plastic components.

## **8 WARRANTY**

Please consult your order form or purchase contract for the warranty provisions.

## **9 SERVICE**




Either in person with your customer representative  
or at the service centre



[info@vorwerk.co.uk](mailto:info@vorwerk.co.uk)  
[www.vorwerk.co.uk](http://www.vorwerk.co.uk)

## 10 TECHNICAL DATA

<b>Kobold VG100 window cleaner</b>	
Safety symbol	
Housing	High-quality recyclable thermoformed plastic
Motor	Maintenance-free DC motor at approx. 18,000 RPM
Input voltage, mains charger	110 – 240 volts alternate current, 60 hertz
Output voltage, mains charger	10.8 V DC
Mains charger model	KSAS7R51080050HK
Nominal motor output	approx. 30 watts
Weight	995 g (without mains charger, without cleaning solution)
Dimensions	Length: 290 mm Width: 140 mm Height: 110 mm
Noise emissions	74 dbA (measured under open air conditions)
Battery pack	Lithium-ion
Battery capacity	approx. 30 minutes
Battery charge time	Approx. 6 hours



---

# kobold

VG100 window cleaner



Choose Quality

**Vorwerk quality**

VORWERK UK LIMITED

Ashurst Manor

Church Lane,

Ascot,

Berkshire

SL5 7DD

