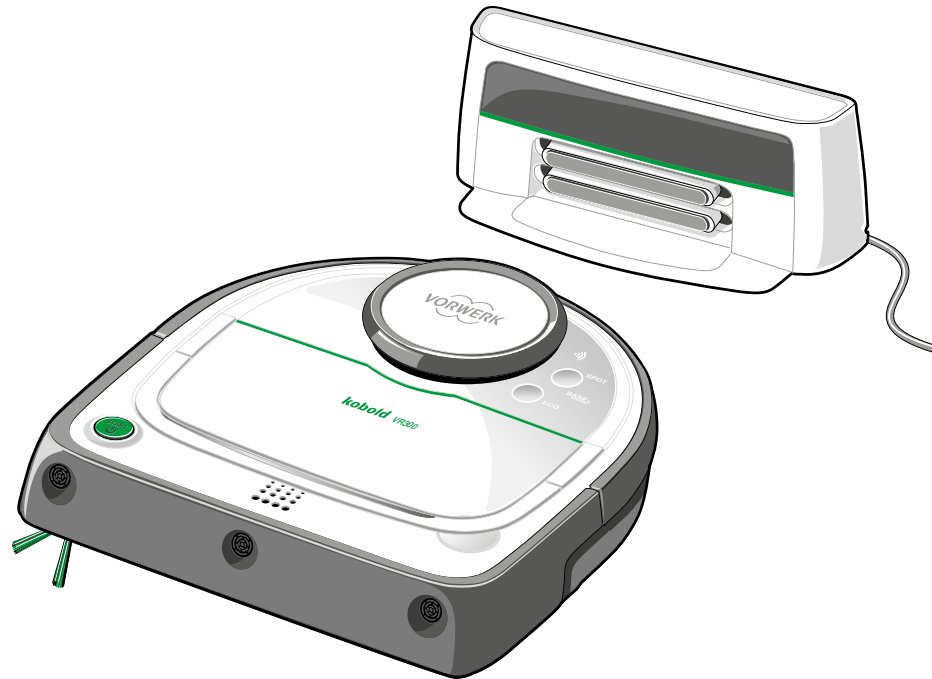
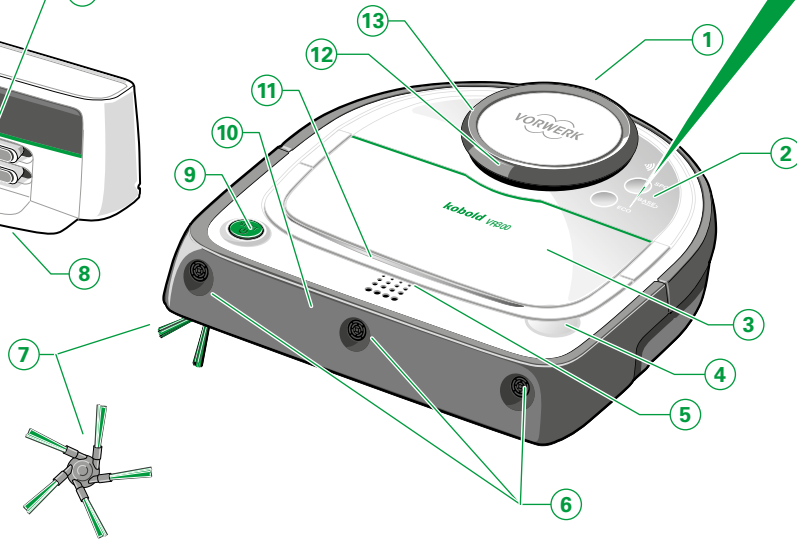
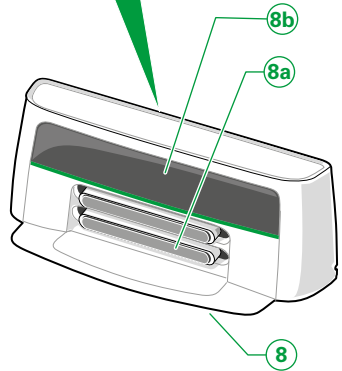
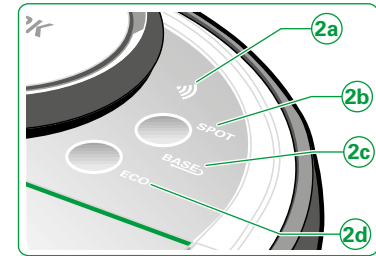
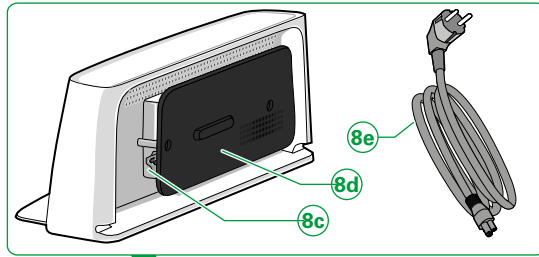

kobold

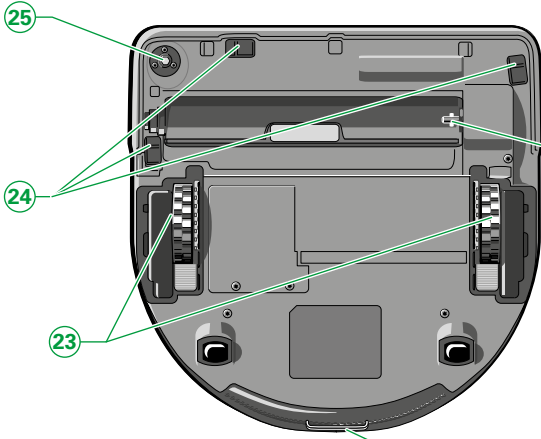
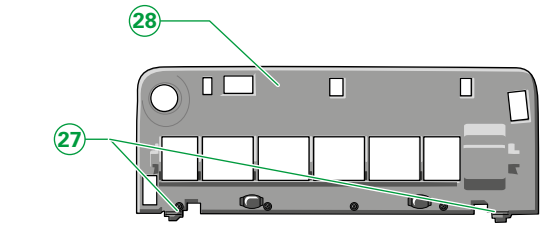
**USER MANUAL
KOBOLD VR300
ROBOT VACUUM
CLEANER
AND ACCESSORIES**



VORWERK

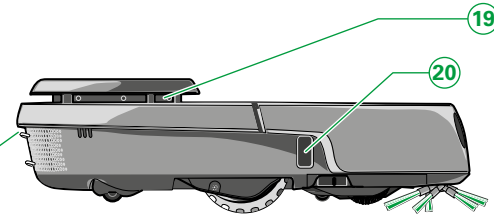
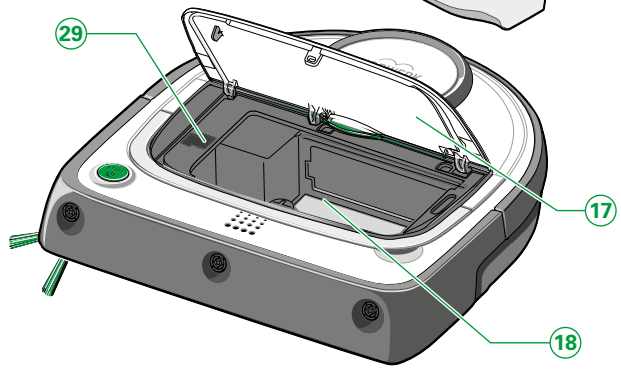
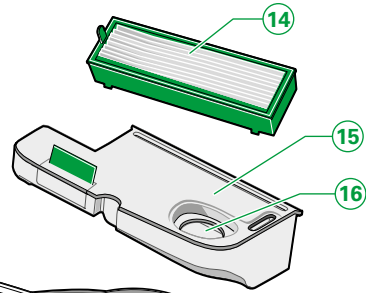
PRODUCT OVERVIEW





22

21



LEGEND

Item	Kobold VR300 Robot Vacuum Cleaner and accessories
1	Robot Vacuum Cleaner
2	Operator panel with 2 function keys
2a	'Wi-Fi' LED function key
2b	'SPOT' LED indicator
2c	'BASE' LED indicator
2d	'ECO mode' LED indicator
3	Dust compartment / dust compartment cover
4	Release button for dust compartment cover
5	LED operating display
6	3 ultrasonic sensors
7	Side brush
8	Base station
8a	Base station charging contacts
8b	Infrared window
8c	Charging socket
8d	Cable holder (black)
8e	Mains cable
9	Start button
10	Front bumper
11	Fold-down carrying handle
12	Laser scanner
13	Top bumper on laser navigation sensor (LDS)

14	Filter
15	Dust container
16	Suction opening
17	Dust compartment cover
18	Dust compartment
19	Laser scanner
20	Wall following sensor
21	Charging contacts
22	Roller brush holder
23	Wheels with climb assist
24	3 floor sensors
25	Side brush holder
26	Roller brush
27	Brush cover locking mechanism
28	Brush cover
29	Micro-USB connection (under the rubber plug)

PRELIMINARY REMARKS

Congratulations on the purchase of your new Kobold VR300 Robot Vacuum Cleaner. The lightweight and manoeuvrable robot vacuum cleaner is going to help keep your home clean and tidy. This innovative device ensures that your floors are kept effortlessly clean. Clean floors are important, but vacuuming is hard work and takes a lot of time. The Kobold VR300 does this for you. The robot vacuum cleaner moves around on its own and cleans your floors, even when you are not home.

BEFORE YOU START

- Read the instruction manual carefully before using the Kobold VR300 Robot Vacuum Cleaner and accessories for the first time.
- Retain the user manual for future reference as it must be kept with it if you pass it on to someone else.

SIGNS AND SYMBOLS

The symbols in this instruction manual have the following meanings:



Warning symbol



Reference to Vorwerk Customer Service/Support



Symbol for a tip



Reference to the Vorwerk website



Laser




Indoor use only



Read manual before charging

- Instruction

CONTENTS

1	For your safety 	7	5	Wi-Fi and app control using smart devices*	9	Disposal and environmental protection	54	
1.1	Intended use	7	5.1	Technical requirements	38	9.1	Disposing of the device	54
1.2	Hazard warnings	8	5.2	Installing the Kobold Robot app	39	9.2	Information on the disposal of the battery	55
1.3	Danger levels	17	5.3	Establishing a Wi-Fi connection	40	9.3	Disposing of the packaging	56
2	Getting started	18	5.4	Connecting to smart devices	41	9.4	Information on environmental protection	57
2.1	Preparing your household	18	5.5	Using the Kobold Robot app	41	10	Warranty	58
2.2	Carrying the Kobold VR300 Robot Vacuum Cleaner	19	5.6	Removing from the network	42	11	Service	58
2.3	Assembly	20	5.7	Controlling with Amazon Alexa	42	12	Technical data	59
2.4	Setting up the base station	21	6	Maintenance	43	13	Declaration of conformity	60
2.5	Connecting the mains cable	21	6.1	Emptying the dust container and cleaning the filter	43			
2.6	Releasing the transport lock	22	6.2	Cleaning the side brush	45			
2.7	Operator panel overview	23	6.3	Cleaning the roller brush	46			
3	Charging	24	6.4	Cleaning the sensors	47			
3.1	Charging on the base station	24	6.5	Cleaning the robot vacuum cleaner and the base station	48			
3.2	Automatic charging	25						
3.3	Returning to the base station	26						
4	Operation	29	7	Software updates	49			
4.1	Putting into operation	29	8	Troubleshooting	50			
4.2	Selecting a cleaning mode	30						
4.3	Standby mode	34						
4.4	Switching off	34						
4.5	Cleaning area and navigation of the robot vacuum cleaner	35						

1 FOR YOUR SAFETY ⚠

The greatest possible safety is a characteristic of Vorwerk products. However, the product safety of the Kobold VR300 Robot Vacuum Cleaner and its accessories can only be assured if you observe the information in this manual.

Please pay particular attention to the following information.

1.1 Intended use

Note!

This appliance can be used by children aged 8 years of age and above and persons with reduced physical, sensory or mental capabilities or lack of experience and knowledge if they have been given supervision or instruction concerning use of the appliance in a safe way and understand the hazards involved.

Children must not play with the appliance. Cleaning and user maintenance shall not be carried out by children unless they are 8 years of age or above and supervised.

KOBOLD VR300 ROBOT VACUUM CLEANER

The robot vacuum cleaner is solely intended for removing dust in domestic areas and may only be used with the corresponding Kobold accessories.

1.2 Hazard warnings

Note!

- Read the instruction manual carefully before using the Kobold VR300 Robot Vacuum Cleaner for the first time.
 - Please pay particular attention to the following information.
 - Retain the user manual for future reference as it must be kept with it if you pass it on to someone else.
-

Risk of electric shock!

- Always switch the device off and disconnect the mains plug on the base station before all retrofitting, cleaning and maintenance work.
- Never pull the mains plug from the socket by the power cord, only by the plug.
- Never attempt to repair the device yourself. Repairs to electrical appliances may only be carried out by a Vorwerk Customer Service Center, a workshop authorised by Vorwerk or a similarly qualified person. Defective parts may only be replaced by original replacement parts in order to avoid hazards.
- Do not insert any sharp objects into the electrical contacts.
- Do not modify the electrical contacts.
- Never carry the base station by the cord.
- Do not continue using the base station and power cord if they are damaged or show signs of a fault.
- In the event of damage, particularly damage to the base plate or scratched sensor windows, contact the Vorwerk Customer Service Center.

- Never immerse the Kobold VR300 Robot Vacuum Cleaner, base station or mains cable in water or other liquids.
 - Never pour water over the device or base station or hold them under running water.
 - Do not use the Kobold VR300 Robot Vacuum Cleaner on damp floors or in places where there is a risk that the device may come into contact with liquids or be submerged in water.
 - Do not use the base station in damp environments.
 - Ensure that your robot vacuum cleaner does not run over power cords, hanging wires or cables on the floor.
 - Never clean the base station with water or damp cleaning agents.
 - If the mains cable on the device is damaged, it must be replaced by the manufacturer or its service department or by a similarly qualified person to avoid hazards.
 - Ensure that you do not damage, bend or twist the mains cable. Do not put heavy objects on it. This could damage the cable and cause an electric shock.
-

Fire hazard!

- Do not use the robot vacuum cleaner to pick up hot ash or burning cigarette ends.
- Never use the Kobold VR300 Robot Vacuum Cleaner in rooms with burning candles or lamps on the floor.
- Secure exposed and hanging cables on electrical appliances (e.g. table lamps). These could be pulled down by the connecting cables, causing damage or a fire.
- Do not let the robot vacuum cleaner drive over recessed floor lamps.
Stopping over a lamp could damage the device and, in the worst case, cause a fire.
- Do not use the robot vacuum cleaner in danger areas, e.g. near open fireplaces.
- The Kobold VR300 Robot Vacuum Cleaner and all its accessories (especially the battery pack) must never be placed in an open fire or exposed to an external heat source.

-
- Do not use the robot vacuum cleaner if it has been dropped on the floor and shows visible signs of damage or does not operate correctly.
 - Ensure that you do not damage, bend or twist the mains cable. Do not put heavy objects on it. This could damage the cable and cause a fire.
-

Explosion hazard!

- Do not vacuum up explosive or readily inflammable substances.
 - Never throw the Kobold VR300 Robot Vacuum Cleaner into an open fire.
-

Choking hazard!

- The cover on the USB port under the dust compartment cover is a small part. Keep it out of the reach of children.
-

Risk of injury!

- Remove easily moveable rugs or runners as well as lightweight, loose objects. Such objects may be pushed along in front of the robot vacuum cleaner, thereby obstructing its floor sensors. If the floor sensors are obstructed, the robot vacuum cleaner may fall down stairs or landings.
 - Keep children and pets away from the robot vacuum cleaner and do not let them stand or sit on it.
 - Clean the floor sensors regularly, as described in this manual (ideally each time the dust container is cleaned).
 - Never reach into the rotating components.
-

Risk of injury due to negative pressure!

- Do not vacuum parts of the body or a person's hair. Do not vacuum in the vicinity of children or pets.

Risk of injury from pinching!

- Keep your distance from the moving components of the Kobold VR300 Robot Vacuum Cleaner.

Risk of injury due to battery leakage!

- Leaking batteries must not come into contact with the eyes or mucous membranes. Wash your hands and rinse your eyes with clean water. If irritation persists, seek medical attention.

Risk of damage!

- Remove lightweight, breakable and moveable objects (e.g. vases, curtains and similar) from the work area. These could be dragged along by the robot vacuum cleaner and, depending on the nature of the object, cause damage to the device, the floor or the object itself.
 - Never start the device directly next to a potential drop. Always make sure that it is positioned at least 1 m away to ensure that the floor sensors function correctly.
 - Secure hanging or exposed cables (e.g. on standard lamps).
 - Do not vacuum liquids, damp dirt or damp floor mats and carpets.
 - Do not use the robot vacuum cleaner in damp environments (in a wet bathroom or in outdoor areas, etc.) or in places where there is a risk that the device could come into contact with liquids.
 - Never pour water over the device or hold it under running water.
 - Never immerse the device in water or other liquids.
-

Risk of damage from improper use!

- We recommend only using original Kobold parts.
- Only use the B-VR300 base station.
- Only operate the base station on a connection that has been properly installed by a specialist.
- Do not operate the device if it is damaged or not fully assembled.
- If the mains cable is defective, the corresponding part may only be replaced with an original replacement part by a Vorwerk Customer Service Center, a workshop authorised by Vorwerk or a person with similar qualifications in order to avoid hazards.
- Never attempt to repair the Kobold VR300 Robot Vacuum Cleaner yourself.
- The Kobold VR300 Robot Vacuum Cleaner is only suitable for cleaning indoor floors.
- Do not allow children to play with the Kobold VR300 Robot Vacuum Cleaner.
- Keep children and pets away from the Kobold VR300 Robot Vacuum Cleaner and do not let them stand or sit on it.
- Do not vacuum up Kobosan active or other powdered cleaning agents with the Kobold VR300 Robot Vacuum Cleaner.
- Do not vacuum up very fine sand, chalk, cement dust or similar. This could clog the filter pores.
- Never use the Kobold VR300 Robot Vacuum Cleaner without a filter. This could damage the motor and shorten the service life of the robot vacuum cleaner.
- To charge the robot vacuum cleaner, use only the original mains cable and the B-VR300 base station supplied.
- Fully charge your Kobold VR300 Robot Vacuum Cleaner at least once a year to avoid deep discharge, which can damage the battery.
- Do not short-circuit the battery under any circumstances.

- Do not cover the infrared window of the base station either with stickers or by putting objects in front of it. If you do, the robot vacuum cleaner will no longer be able to communicate with the base station.
- Do not cover the sensors on the robot vacuum cleaner. Doing so may mean that the robot vacuum cleaner can no longer navigate and position itself.
- Only use the app to control the Kobold VR300 Robot Vacuum Cleaner when it is in sight.
- Do not allow the Kobold VR300 Robot Vacuum Cleaner to drive towards drop-offs when operating it with the app.
- The ability of the Kobold VR300 Robot Vacuum Cleaner to clean deep pile carpet is limited. Only use the robot vacuum cleaner on carpets with a pile height of up to 15 mm. Mark out the boundaries of deep-pile carpets, if necessary, with the virtual no-go lines in the Kobold Robot app or with the optionally available magnetic strip.
If, however, you want to use the VR300 Robot Vacuum Cleaner to clean a carpet with a pile height greater than 15 mm, test it on an inconspicuous area of carpet first.
- The Kobold VR300 Robot Vacuum Cleaner is not approved for cleaning worktops or ceramic hobs.
- Keep breakable, light and loose objects out of range of the Kobold VR300 Robot Vacuum Cleaner.
- Secure curtains, tablecloths and cords in the working area of the Kobold VR300 Robot Vacuum Cleaner.
- The Kobold VR300 Robot Vacuum Cleaner is equipped with a comprehensive range of sensors that prevent the device from falling down, e.g. on stairs and landings. However, only by setting up a physical barrier can the user ultimately guarantee that such situations will be prevented.

- Clean the floor sensors regularly, as described in this manual (ideally each time the dust container is cleaned). If the floor sensors are dirty, the Kobold VR300 Robot Vacuum Cleaner may fall down stairs or landings. This can cause severe damage to the device.
- Remove light, loose objects (e.g. paper, items of clothing, thin rugs) from the work area. Such objects may be pushed along in front of the robot vacuum cleaner, thereby obstructing its floor sensors. If the floor sensors are obstructed, the robot vacuum cleaner may fall down stairs or landings. This can cause severe damage to the device.
- Keep the optionally available magnetic strip (not included) away from strong external magnetic fields. It may become damaged or demagnetised.
- The app control makes it possible to use the Kobold VR300 Robot Vacuum Cleaner even when you are on the move. Ensure that you have prepared your home so as to prevent any hazardous situations from arising.
- Use extreme care to avoid scratching the infrared window of the base station and do not cover it with stickers or other objects.
- Extreme heat or cold shortens the charge time and/or can cause damage to the battery.
- Do not leave the device near a heat source (oven, heater or hot radiator).
- Do not use abrasive cleaning pads, chemical agents or aggressive liquids such as benzene or acetone to clean the robot vacuum cleaner.
- Never clean the device with water or damp cleaning agents.
- Only operate the base station with the alternating current voltage and mains frequency stated on the type plate.
- Use and charge the robot vacuum cleaner at temperatures between 5°C and 35°C. The device should also be stored within this temperature range.
- Do not attempt to remove the battery.

- Never clean the roller brush using liquids. The roller brush is not dishwasher safe or water-proof.
 - Do not use the device outdoors.
 - Do not use the robot vacuum cleaner in danger areas, such as near showers or swimming pools.
 - Do not expose the battery to fire, heat or direct sunlight.
-

LASER NAVIGATION SENSOR

- The navigation sensor contains a class 1 rotating laser according to IEC 60825-1:2014 or EN 60825-1:2014.

The following rules of conduct generally apply for lasers:



- Switch off the VR300 Robot Vacuum Cleaner prior to all retrofitting work.
- Do not aim the laser beam at people.
- Do not look at the direct or reflected laser beam.
- Modifications (changes) or attempts to repair the device and especially the navigation sensor are prohibited.

The device complies with the safety regulations of the country in which it has been sold by an authorised Vorwerk organisation. If the device is used in another country, compliance with the local safety standards cannot be guaranteed. Vorwerk therefore assumes no liability for any resulting safety risks for the user.

1.3 Danger levels

- For your safety, please also observe the hazard warnings in the text of the chapters that follow.

The hazard warnings in the following chapters are identified by a warning symbol and/or signal word indicating a danger level:

Danger level	Warning symbol	Signal word	Possible hazards
3		Warning!	- Risk of electric shock - Fire hazard - Explosion hazard
2		Caution!	- Risk of injury
1		Note!	- Risk of damage from improper use - Risk of property damage from improper use

2 GETTING STARTED

In this chapter, you will learn how to set up your Kobold VR300 Robot Vacuum Cleaner for use. You will learn about the basic functions of your robot vacuum cleaner and how to handle the device.

2.1 Preparing your household

Your Kobold VR300 Robot Vacuum Cleaner has a number of safety functions. Nevertheless, you should observe the following before using your robot vacuum cleaner:



Warning! Risk of electric shock!

- Make sure that your robot vacuum cleaner does not run over power cords, hanging wires or cables on the floor.



Caution! Risk of injury from falling objects!

- Remove or secure lightweight, breakable and moveable objects (e.g. vases, curtains or similar).

Note! Risk of damage from improper use!

- The ability of the Kobold VR300 Robot Vacuum Cleaner to clean deep pile carpet is limited. Only use the robot vacuum cleaner on carpets with a pile height of up to 15 mm.
 - Mark out the boundaries of deep-pile carpets, if necessary, with the virtual no-go lines in the Kobold Robot app or with the optionally available magnetic strip. If, however, you want to use the VR300 Robot Vacuum Cleaner to clean a carpet with a pile height greater than 15 mm, test it on an inconspicuous area of carpet first
-

i The Kobold VR300 Robot Vacuum Cleaner is not fully charged on delivery and must, therefore, be fully charged before using it for the first time (see Chapter "3 Charging" on page 24).

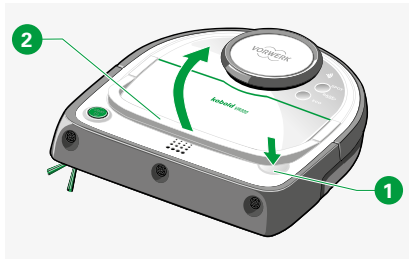


Figure 2.1 Folding up the carrying handle

2.2 Carrying the Kobold VR300 Robot Vacuum Cleaner

- Lightly press the button **1** that releases the cover on the dust compartment. This will enable you to lift up the carrying handle **2**.

i The carrying handle can only be lifted up to an angle of up to 45 degrees. This is for stability reasons and to prevent dirt from accidentally falling out of the dust compartment.

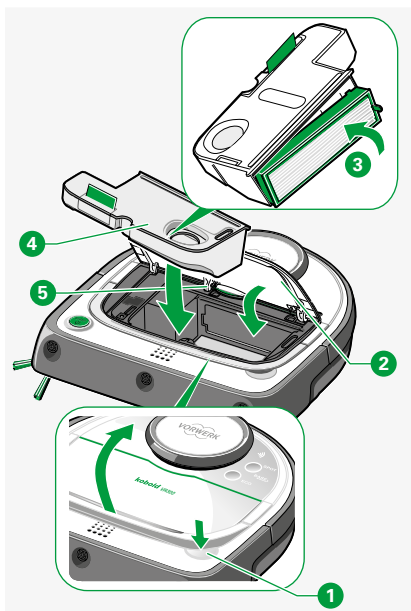


Figure 2.2 Inserting the filter

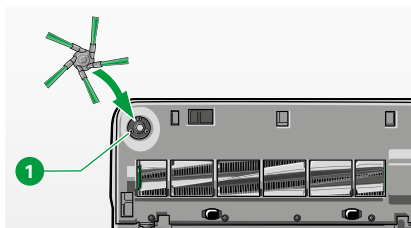


Figure 2.3 Installing the side brush

2.3 Assembly

2.3.1 Removing the transparent protective films

- Remove the transparent protective films from the Kobold VR300 Robot Vacuum Cleaner and the base station.

2.3.2 Inserting the filter

Note! Risk of damage from improper use!

- Never operate the device without a filter.
-
- Press the button **1** that releases the cover on the dust compartment **2** and open the dust compartment.
 - Close the dust container with the help of the filter **3**. The green lug on the filter frame should be on the right-hand side pointing forwards.
 - Insert the closed dust container with filter **4** into the robot vacuum cleaner.
 - Press down on the dust compartment cover **2** and ensure that it is properly closed.

i The dust compartment cover can be closed by simply pressing from the inside against the middle hinge **5**.

2.3.3 Installing the side brush

- To reattach the side brush, align the centre of the side brush with the mounting point **1** and press it into position.

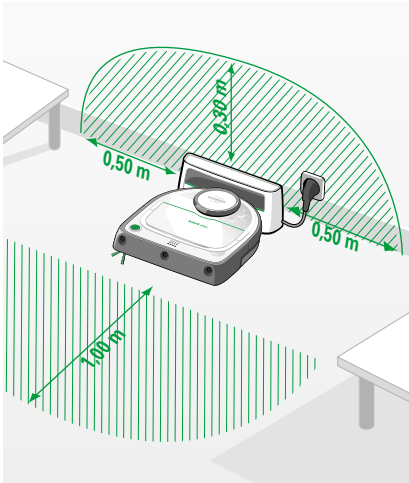


Figure 2.4 Setting up the base station

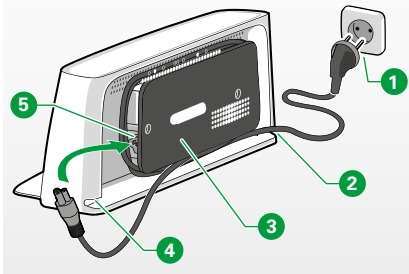


Figure 2.5 Connecting the mains cable

2.4 Setting up the base station

Note! Risk of damage from improper use!

- Only use the B-VR300 base station.

- Place the base station on a level surface next to a wall so that the charging contacts and infrared window are freely accessible for the Kobold VR300 Robot Vacuum Cleaner (Figure 2.4). Ideally there should be no height differences or obstacles 0.3 m above the base station or 0.5 m either side of it.
- Ensure that there is a level, freely accessible area approx. 1 m in front of the robot vacuum cleaner.
- Do not set up the base station underneath furniture, or on stairs or landings.
- Connect the mains plug to the socket.

2.5 Connecting the mains cable

- Plug the mains cable into the designated charging socket (5) on the base station and ensure that it is fully inserted.
- Wrap the cable around the cable holder (3).
- Ensure that you leave enough cable protruding from the lower opening in the housing (left (4) or right (2)) to connect the mains cable with mains plug to the socket (1).

2.6 Releasing the transport lock

The Kobold VR300 Robot Vacuum Cleaner comes with an integrated transport lock. To release the transport lock, you must first connect the robot vacuum cleaner to the base station:

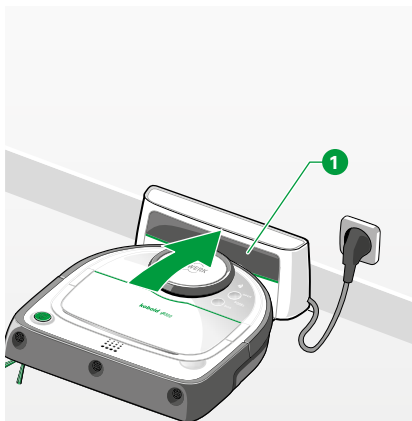


Figure 2.6 Connecting the robot vacuum cleaner to the base station

- Place the robot vacuum cleaner in front of the base station **1**.
- Ensure that the charging contacts on the rear of the robot vacuum cleaner are touching the charging contacts on the base station.

The transit lock is now deactivated and the robot vacuum cleaner can be switched on.

- i** You must fully charge your robot vacuum cleaner before using it for the first time. The battery has sufficient charge when the LED operating display remains solid green. For instructions on charging your robot vacuum cleaner, see Chapter “3 Charging” on page 24.
- i** You can install the VR300 app while your robot vacuum cleaner is charging for the first time. The Wi-Fi connection can be set up while charging is in progress. See Chapter “5 Wi-Fi and app control using smart devices*” on page 38 or the app for more details.

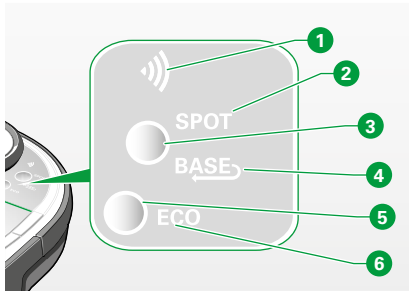


Figure 2.7 Operator panel

2.7 Operator panel overview

The **operator panel** consists of two **function keys** and four **LED indicators**. The **LED indicators** show you the current status. Using the **function keys** 3 and 5, you can switch between the different functions.

Item	Display	Meaning
1	WiFi	The Wi-Fi indicator shows whether or not the device is connected to your home network or whether it is actively looking for a connection (see Chapter “5.3 Establishing a Wi-Fi connection” on page 40).
2	SPOT	The SPOT indicator is lit when the robot vacuum cleaner is operating in SPOT cleaning mode (see Chapter “4.2.2 SPOT cleaning mode” on page 32).
4	BASE	The BASE indicator shows whether or not the base station can be located and whether it is on its way there (see Chapter “3 Charging” on page 24).
6	ECO	The ECO indicator shows whether the robot vacuum cleaner is operating in ECO mode (see Chapter “4.2.3 ECO mode” on page 33).



The two function keys only respond to a light touch or very slight pressure. Pressing firmly causes the function keys not to respond or function.

3 CHARGING

Note! Risk of damage from improper use!

- The Kobold VR300 Robot Vacuum Cleaner can only be charged at temperatures between 5°C and 35°C.
- Extreme heat or cold shortens the charge time and/or can cause damage to the battery.
- To charge, use only the original mains cable and the B-VR300 base station supplied.

The Kobold VR300 Robot Vacuum Cleaner is not fully charged on delivery.

- Fully charge the robot vacuum cleaner before using it for the first time.

i As soon as the LED operating display is solid green (see “Figure 3.1 Charging”), the Robot Vacuum Cleaner is ready for operation. Fully charging the empty battery may take 3.5 to 4 hours. After completing its cleaning cycle, it should take 2 to 3 hours to charge the battery.

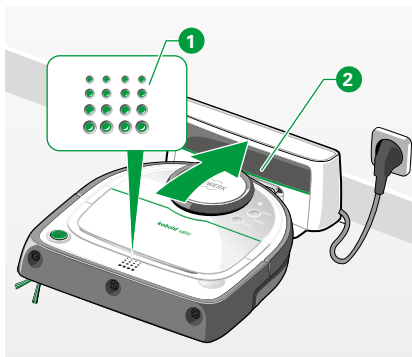


Figure 3.1 Charging the robot vacuum cleaner

3.1 Charging on the base station

To charge your Kobold VR300 Robot Vacuum Cleaner before using it for the first time or when the battery is completely empty, please proceed as follows:

- Place the robot vacuum cleaner in front of the base station **2**. The base station must be connected to the power supply.

*The LED operating display **1** begins to flash when the robot vacuum cleaner is placed correctly on the base station.*

- Ensure that the charging contacts **2** on the rear of the robot vacuum cleaner are touching the charging contacts on the base station.

*During charging, the LED operating display pulsates. As soon as the battery is fully charged, the LED operating display **1** will remain solid green.*

i The full battery charge level is only reached after about 2-3 full charging cycles, since the batteries first have to adapt to the equipment characteristics.

3.2 Automatic charging

Once floor cleaning is complete or when the battery charge level drops too low, the Kobold VR300 Robot Vacuum Cleaner automatically returns to the base station for charging. When the robot vacuum cleaner has finished cleaning and returned to the base station, the **BASE 1** indicator lights up permanently. If it stops cleaning temporarily and returns to the base station to recharge the battery, the **BASE 1** indicator flashes during the journey and while it is charging. As soon as the robot vacuum cleaner is connected to the base station, the LED operating display flashes green.

Once the battery is fully charged, the LED operating display remains solid green.

i The robot vacuum cleaner only returns to the base station automatically if it can locate the base station, e.g. if cleaning started at the base station.

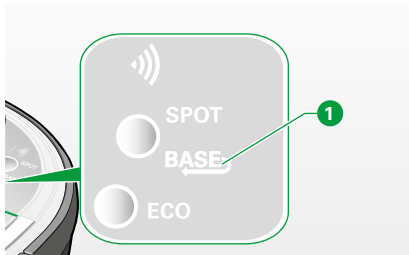


Figure 3.2 Robot vacuum cleaner returns to base station



If you move the robot vacuum cleaner manually during cleaning, it may not be able to find its way back to the base station.



The robot can only be restarted when the battery charge level is at least 25%.

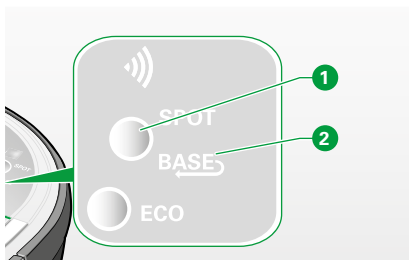


Figure 3.3 Returning the robot vacuum cleaner to the base station

3.3 Returning to the base station

To send the robot vacuum cleaner to the base station, it must be able to locate the base station. If the robot vacuum cleaner recognises where the base station is located, the **BASE** ② indicator will be faintly lit. If the robot vacuum cleaner does not know where the base station is, **BASE** indicator will not be on.


If the **BASE** indicator is faintly lit, you can return the robot vacuum cleaner to the base station as follows:


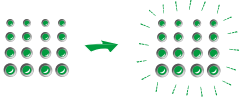


- If the robot vacuum cleaner is in the process of cleaning, you can pause the cleaning cycle by pressing the **start button**.
- Then press the function key ①: the **BASE** ② indicator should now be brightly illuminated.
- Confirm your selection by pressing the **start button** again.

The robot vacuum cleaner returns to the base station.





3.3.1 LED display

You can see the battery charge status from the LED display on the robot vacuum cleaner.


 If you use the robot vacuum cleaner in combination with the app, you can have information on the current status sent to your smartphone at any time.

LED display on the robot vacuum cleaner (robot vacuum cleaner not at the charging station)	Meaning	Operating time
	<p>You can start the robot vacuum cleaner.</p>	<p>The robot vacuum cleaner is ready for operation.</p>
	<p>Now press the start button to start the cleaning process. The LED indicator flashes green for 5 seconds to notify you that the battery is not fully charged. You can, however, still start the robot vacuum cleaner by pressing the start button again within 30 seconds.</p> <p> Please note that the running time will be reduced if the battery is not fully charged when it is started.</p> <p>If the battery level becomes too low while cleaning, the robot vacuum cleaner will automatically return to the base station for charging. As soon as it is sufficiently charged, it will automatically carry on cleaning.</p>	<p>The operating time is: 10 to 45 minutes*.</p>
	<p>You must charge the robot vacuum cleaner before it can start cleaning (see Chapter “3.1 Charging on the base station” on page 24).</p>	<p>The robot vacuum cleaner is not ready to start cleaning.</p>

* The actual running time of the Kobold VR300 Robot Vacuum Cleaner can vary depending on the type of flooring it is cleaning or how warm it is. If it is cleaning a carpet, or it is very warm in summer, it will need more battery power.

LED display for different charging statuses (robot vacuum cleaner at the charging station)	Meaning	Operating time
	<p>The robot vacuum cleaner is charging on the base station. The charge level of the battery is < 25 %.</p>	<p>The robot vacuum cleaner is not ready to start cleaning.</p>
	<p>The robot vacuum cleaner is charging on the base station. The charge level of the battery is > 25 %.</p> <p>You can start the robot vacuum cleaner.</p> <p>If the battery level becomes too low while cleaning, the robot vacuum cleaner will automatically return to the base station for charging. As soon as it is sufficiently charged, it will automatically carry on cleaning.</p> <p> Please note that the running time of the robot vacuum cleaner is reduced if the battery is not fully charged when it is started.</p>	<p>The robot vacuum cleaner is ready for operation.</p> <p>The operating time is: 10 to 45 minutes*.</p>
	<p>The robot vacuum cleaner is docked at the base station and is fully charged.</p>	<p>The robot vacuum cleaner is ready for operation.</p> <p>The operating time is up to 60 or 90 minutes*.</p>


* The actual running time of the Kobold VR300 Robot Vacuum Cleaner can vary depending on the type of flooring it is cleaning or how warm it is. If it is cleaning a carpet, or it is very warm in summer, it will need more battery power.


 In ECO mode, the robot vacuum cleaner has a running time of up to 90 minutes. The ECO mode has to be set manually (see Chapter “4.2.3 ECO mode” on page 33).

4 OPERATION

4.1 Putting into operation

4.1.1 Switching on

 When you switch your robot vacuum cleaner on for the first time, it must be docked on the base station, see Chapter “2.6 Releasing the transport lock” on page 22.

 When switching the robot vacuum cleaner on for the first time or after it has been completely powered down, the start-up time (boot time) is slightly longer.

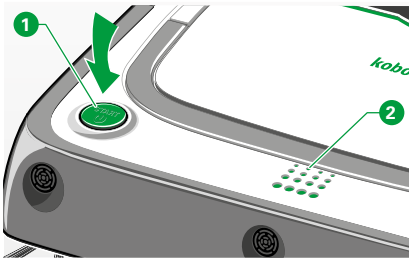


Figure 4.1 Starting the robot vacuum cleaner

- Press the **start button 1**.
The Kobold VR300 Robot Vacuum Cleaner is activated and a brief acoustic signal sounds.
- Pressing the **start button 1** again starts the robot vacuum cleaner in normal cleaning mode.

When its battery charge level is low, the Kobold VR300 notifies you that the cleaning period may be reduced by its LED indicator **2** flashing green for approximately 5 seconds. You can, however, still start the cleaning process by

- pressing the **start button 1** again.
- Alternatively, charge the robot vacuum cleaner before starting cleaning (see Chapter “3 Charging” on page 24.)

4.2 Selecting a cleaning mode

The Kobold VR300 Robot Vacuum Cleaner has two cleaning options: **ALL ROOMS** (normal cleaning mode) and **SPOT** cleaning mode.

4.2.1 Normal cleaning mode (ALL ROOMS)

FUNCTION

The normal cleaning mode **ALL ROOMS** is pre-configured and is activated by pressing the **start button**. As the standard cleaning mode, it is suitable for most cleaning requirements.

- Start the cleaning process by pressing the **start button** on the robot vacuum cleaner ① (see Chapter “4.1.1 Switching on” on page 29).

In normal cleaning mode, the robot vacuum cleaner works in straight parallel lines to ensure that your floors are cleaned as effectively as possible. It divides larger rooms into areas of approx. 4 x 4 m. It starts by travelling along the outer edge of the respective area and then cleans the inner section. It continues in this way, one section at a time. When it has finished cleaning, it returns to the base station.

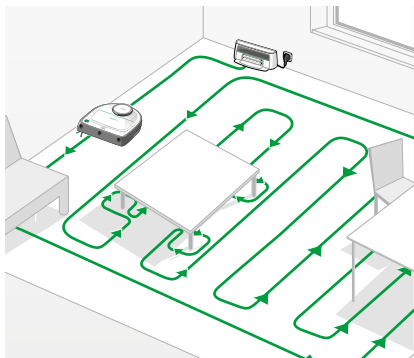


Figure 4.2 Normal cleaning mode



Depending on the layout (furniture, doors, etc.), the robot divides the room into various sub-areas and may initially leave out a sub-area and return to it later, however, the entire floor area will be cleaned. This can be optimised by moving the base station.

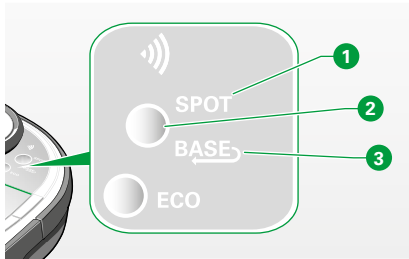


Figure 4.3 Operator panel

SWITCHING TO “ALL ROOMS” MODE

You can switch back to normal cleaning mode from another setting using the operator panel as follows:

- Press the **function key** **2** until both the **SPOT** **1** and **BASE** **3** lights go out.
You are now in “All Rooms” mode
- Now press the start button to start the cleaning process.
The robot vacuum cleaner starts operating in normal cleaning mode.



In small, enclosed rooms, the robot vacuum cleaner cleans for a minimum of 8 minutes. Depending on the size of the room, the area may be cleaned more than once.

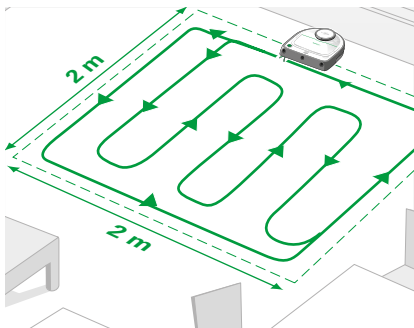


Figure 4.4 SPOT cleaning mode

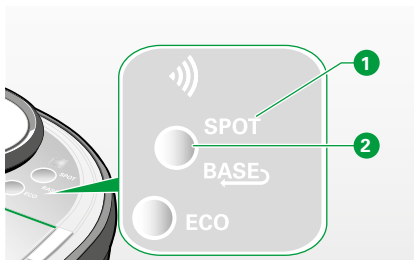


Figure 4.5 Operator panel

4.2.2 SPOT cleaning mode

FUNCTION

The **SPOT** cleaning mode is suitable for cleaning a smaller area. Set the Kobold VR300 Robot Vacuum Cleaner down with the bumper facing forward in front of the area you want to clean. The robot vacuum cleaner moves in straight, parallel lines and cleans an area of approx. 2 x 2 m. When it has finished cleaning the area, it returns to the starting point. If the base station is within range (less than 0.2 m away from the area being cleaned), the robot vacuum cleaner will go directly there.

SWITCHING TO SPOT CLEANING MODE

You can switch to SPOT cleaning mode from another setting using the operator panel as follows:

- Press the **function key 2** until the **SPOT indicator 1** lights up.
You are now in the SPOT cleaning mode.
- Now press the start button to start the cleaning process.
The robot vacuum cleaner starts operating in SPOT cleaning mode.

4.2.3 ECO mode

FUNCTION

In **ECO mode**, the robot vacuum cleaner works with reduced motor performance. It is quieter and uses less energy. In ECO mode, the battery capacity of the robot vacuum cleaner is sufficient for up to 90 minutes.

ACTIVATING THE ECO OPTION

- To do so, press the **function key** ①.
The ECO indicator ② *lights up.*
- Now press the start button to run the robot vacuum cleaner in ECO mode.
The robot vacuum cleaner now starts cleaning more quietly and uses less energy.

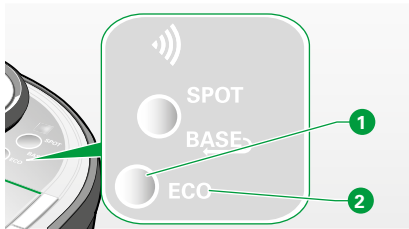


Figure 4.6 ECO mode



The **ECO function** works like a mechanical switch, i.e. the robot vacuum cleaner stays in ECO mode if you temporarily set it to standby.

4.2.4 Pausing

If you want to stop the cleaning process for a short time, proceed as follows:

- Press the **start button** ① on the robot vacuum cleaner.
The LED display ② *on the robot vacuum cleaner flashes green.*

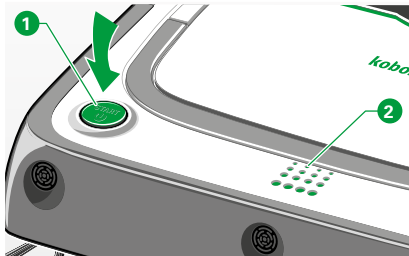


Figure 4.7 LED display when paused

4.2.5 Cancelling cleaning

- To cancel cleaning, hold down the **start button** ① for approx. 3 seconds until the unit plays a tune to confirm that the cleaning process has been cancelled.

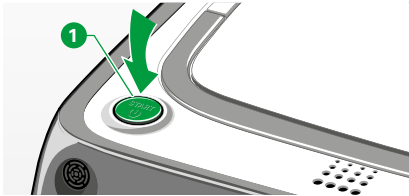


Figure 4.8 Pressing the start button on the robot vacuum cleaner for standby mode

4.3 Standby mode

The robot vacuum cleaner automatically switches to standby mode if it is not used for more than 5 minutes. All LEDs will have gone out.

- When you press the **start button** ① again, it switches back on and the LED display lights up.

Provided there is sufficient charge in the battery, the robot vacuum cleaner is ready for operation.

4.4 Switching off the robot vacuum cleaner

USER SWITCH OFF

If you do not want to use the Kobold VR300 Robot Vacuum Cleaner for an extended period of time (e.g. while on holiday), you can switch it off entirely.

To switch off the robot vacuum cleaner, proceed as follows:

- Press the **start button** until all the LEDs have gone out.

The robot vacuum cleaner is now switched off.



You cannot switch off the Kobold VR300 Robot Vacuum Cleaner while it is charging or docked on the base station.



When the batteries are completely empty, the robot vacuum cleaner switches off automatically. If this happens, the settings on the robot vacuum cleaner may be lost.



When switched off, the robot vacuum retains all its settings for approx. 2 weeks, until it has lost all its charge.

AUTOMATIC SWITCH OFF

The robot vacuum cleaner switches off automatically after 15 minutes if:

- it is not docked on the base station and
- it is not connected to Wi-Fi (see Chapter “5 Wi-Fi and app control using smart devices*” on page 38 for more information) and
- no schedule has been activated for the next 15 hours.

By switching off, it retains its battery charge if it is not used for an extended period.

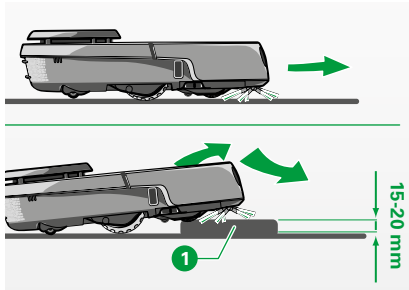


Figure 4.9 Climbing over objects

4.5 Cleaning area and navigation of the robot vacuum cleaner

The robot vacuum cleaner climbs over low objects within the area to be cleaned. It recognises and goes around obstacles with minimal or gentle contact.

4.5.1 Climbing over objects with the climb assist

Despite its low height, the robot vacuum cleaner can easily climb over objects with a height of up to 20 mm **1** (e.g. door sills) or 15 mm (rugs) using its climb assist function.



The climbing ability of the robot vacuum cleaner can be positively or negatively influenced by the shape of the object, the type of floor covering and other local conditions.

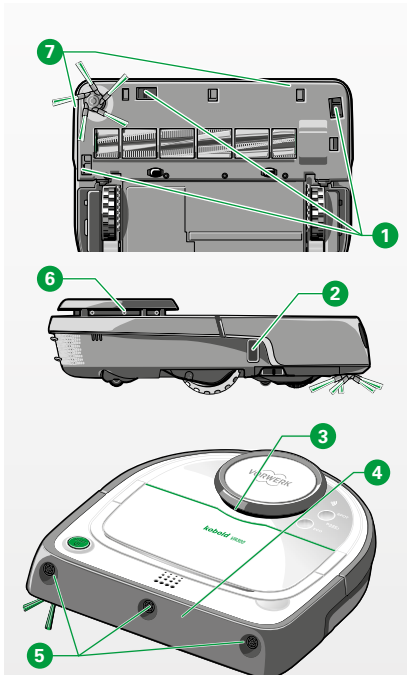


Figure 4.10 Sensors on the robot vacuum cleaner

4.5.2 Sensors

In order to recognise and take account of obstacles when navigating the area to be cleaned, the Kobold VR300 Robot Vacuum Cleaner is equipped with the following:

- 3 floor sensors **1**,
- 1 wall following sensor **2**,
- 2 contact sensors on the top bumper (LDS) **3**,
- 4 contact sensors on the front bumper **4**,
- 3 ultrasonic sensors **5**,
- 1 laser scanner **6**,
- 2 magnetic strip sensors **7**.

The **laser scanner** **6** rotates 360° five times per second, covering a radius of approximately four metres around the robot vacuum cleaner. Transparent or highly reflective objects (glass, acrylic, mirrors etc.) that are not recognised by the rotating laser scanner are captured by the **ultrasonic sensors** **5**. As soon as the ultrasonic sensors detect obstacles at a distance of 15 cm, the robot vacuum cleaner reduces its driving speed.

As long as the robot vacuum cleaner is driving alongside an obstacle (e.g. a wall), the ultrasonic beam is deactivated to permit correct edge cleaning.

In rare cases, obstacles are not recognised by the ultrasonic sensors. Such obstacles are detected through contact with the front bumpers **4** or the LDS bumper **3**.

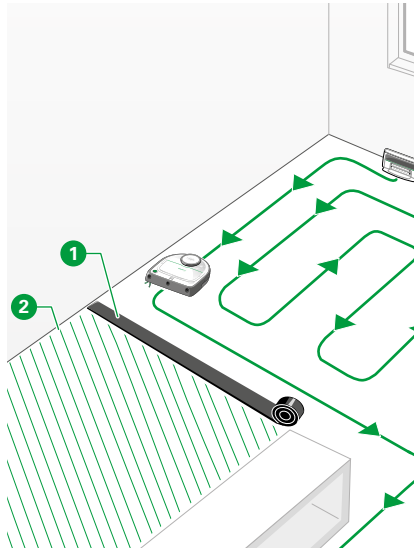


Figure 4.11 Magnetic strip

4.5.3 Magnetic strip (optional accessory)



The magnetic strip is an optional accessory and is available separately. It fulfils the same function as the no-go lines in the Kobold Robot app.

You can use the magnetic strip **1** to outline the area to be cleaned without having to close a door.

The robot vacuum cleaner detects the magnetic strip and does not cross it.

- Lay the magnetic strip flat on the floor, e.g. from one wall to the opposite wall, in order to exclude an area **2** from being cleaned. You can cut the strip with scissors if required.
- Press the **start button**.

The robot vacuum cleaner starts cleaning the entire area within the specified boundary. Once the robot vacuum cleaner is done cleaning, it automatically returns to the base station or the starting point.



The magnetic strip has to be positioned for each cleaning cycle as the robot vacuum cleaner does not store its location.



TIPS FOR USING THE MAGNETIC STRIP

- On slippery surfaces, secure the magnetic strip using double-sided tape in order to prevent it from shifting.
- Lay the magnetic strip under a carpet if you do not want that carpet to be cleaned.

5 WI-FI AND APP CONTROL USING SMART DEVICES*

Using the Kobold Robot app, you can control the Kobold VR300 Robot Vacuum Cleaner from your smartphone or tablet. The technical requirements and necessary steps are explained in this chapter.

* (not available in all countries)

5.1 Technical requirements

To use the robot vacuum cleaner with the app, you will require the following:

WI-FI INTERNET CONNECTION



The robot vacuum cleaner supports the communication protocols IEEE802.11 b/g/n with a 2.4 or 5.0 GHz Wi-Fi frequency band. The supported encryption standards are WPA and WPA2-PSK. If you are not certain of the standards used by your Wi-Fi and your router, contact your Internet provider or your router manufacturer.



‘Personal hotspots’ on your smart device are not supported. In addition, our app does not support other encryption technologies used by Wi-Fi routers such as WEP.



If you have activated a MAC address block in your router and wish to enable the robot vacuum cleaner, you can find the MAC address (“Robot ID”) on the type plate on the underside of the robot vacuum cleaner.



Mobile routers may lead to connection problems with the robot vacuum cleaner in isolated cases. If in doubt, avoid the use of mobile routers.

SMART DEVICE

The Kobold Robot app is compatible with all standard smartphones and tablets with iOS or Android operating systems. For more detailed information on currently supported devices, see the Kobold Robot app page in the Google Play Store or the Apple App Store.

THE KOBOLD ROBOT APP

For instructions on installing and using the app, see Chapter “5.2 Installing the Kobold Robot app” on page 39.

E-MAIL ADDRESS

An account needs to be created in the Kobold Robot app using a valid e-mail address, prior to using the robot vacuum cleaner via the app. This ensures that only you will be able to control your robot vacuum cleaner via the app.

5.2 Installing the Kobold Robot app



- Download the *Kobold Robot app* from the Apple App Store or Google Play Store and install it on your smartphone or tablet. You can find the app under the name *Kobold Robot*.
- Start the app.
- Click “Create Account” and follow the instructions in the app.
A confirmation e-mail will be sent to your e-mail account within a few minutes of registration.
- Confirm the link in the registration e-mail.

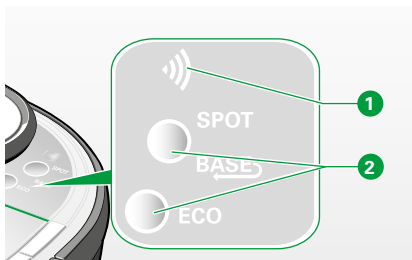


Figure 5.1 Wi-Fi connection

5.3 Establishing a Wi-Fi connection

When you first switch your robot vacuum cleaner on, the WiFi function is deactivated and the WiFi symbol ① is not illuminated.

- To establish a Wi-Fi connection, follow the exact instructions in the Kobold Robot app (see Chapter “5.2 Installing the Kobold Robot app” on page 39).

SWITCHING WI-FI ON AND OFF


- To switch the Wi-Fi function on or off, hold down both function keys ② at the same time for more than four seconds.

The Wi-Fi symbol...	Meaning of the display
...is off.	The Wi-Fi function on the robot vacuum cleaner is switched off.
...is continuously lit.	The robot vacuum cleaner is connected to the network and the app.
... flashes rapidly.	The robot vacuum cleaner is having problems connecting to the home network. Easy Connect connection is established. Wi-Fi is active, data is being transmitted.
... pulses slowly.	The robot vacuum cleaner is in HOTSPOT mode and is looking for a connection.

5.4 Connecting Kobold VR300 robot vacuum cleaners to smart devices

- Open the app on your smart device using your login details and select “Add Robot”. All subsequent steps are explained in the app.
- You can add multiple robot vacuum cleaners in your app.



If the WiFi symbol  (“Figure 5.1 Wi-Fi connection” on page 40) is continuously lit, the connection to the server and app is active.

5.5 Using the Kobold Robot app

The remote control function on your Kobold VR300 Robot Vacuum Cleaner can only be operated using the app if your smart device and the robot vacuum cleaner are connected to the same Wi-Fi. If the robot vacuum cleaner is in standby mode, it can be woken up using the app.



Detailed information on all aspects of the *Kobold Robot app* is available from the Google Play Store or Apple App Store.

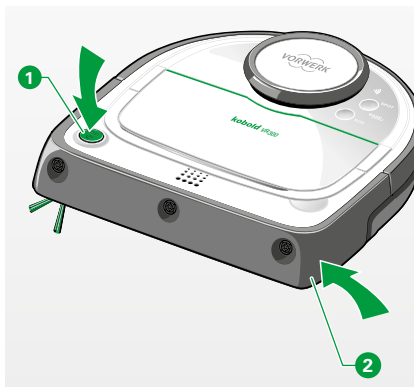


Figure 5.2 Removing robot vacuum cleaners from the network

5.6 Removing VR300 Robot Vacuum Cleaners from the network

Remove your robot vacuum cleaner from the network if you wish to change your Wi-Fi password, your name or your provider, or if you wish to hand over your robot vacuum cleaner to a third party.

- To remove the Robot Vacuum Cleaner from the network, push-hold the bumper from the right side of the robot ② (opposite side of the side brush) and hold down the **start button** ① at the same time.
The bumper has been correctly pressed if you hear a click.
- Keep the bumper pushed and start button hold down until all the lights on the Robot Vacuum Cleaner have gone out.

The WiFi settings are now reset.



To reactivate them, perform all the steps described in Chapter “5.4 Connecting Kobold VR300 robot vacuum cleaners to smart devices” on page 41.

5.7 Controlling Kobold VR300 Robot Vacuum Cleaners with Amazon Alexa*

Kobold VR300 Robot Vacuum Cleaner can be controlled by speech with Amazon Alexa, the voice assistant service of Amazon.

The availability of this service is limited in terms of countries and languages.

Please visit the Amazon web page in your country to find out more about Amazon Alexa, the voice assistant service of Amazon and the possibility of controlling your Kobold VR300 with this service.

*Availability may vary depending on the country

6 MAINTENANCE

Regular maintenance of your Kobold VR300 Robot Vacuum Cleaner will ensure optimum functionality and enjoyment. Helpful information on cleaning and caring for your robot vacuum cleaner is provided in the following chapter.



Warning! Risk of electric shock!

- Always switch the device off and disconnect the mains plug on the base station before all retrofitting, cleaning and maintenance work.

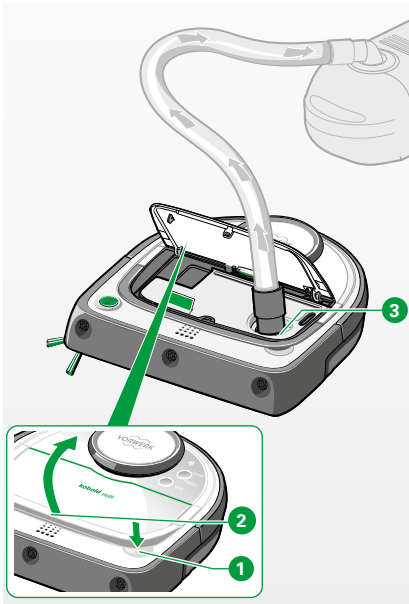


Figure 6.1 Cleaning out the dust container

6.1 Emptying the dust container and cleaning the filter

6.1.1 Emptying the dust container

For best results, empty and clean the dust container after every use.

- Press the button **1** that releases the cover on the dust compartment **2** and open the dust compartment.
- Place the end of your conventional vacuum cleaner hose onto the suction opening **3** and switch it on. The contents of the dust compartment and filter will be vacuumed out. You will obtain the best cleaning results by operating the conventional vacuum cleaner at the maximum setting.

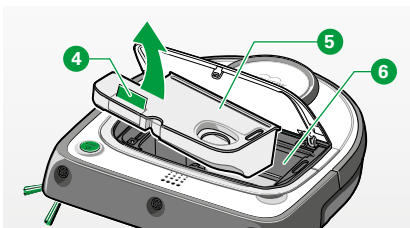


Figure 6.2 Removing the dust container

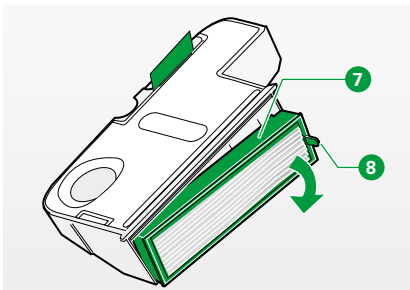


Figure 6.3 Removing the filter

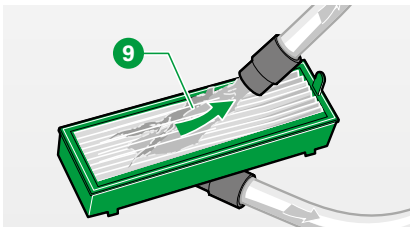


Figure 6.4 Cleaning the filter

The dust container can also be cleaned manually:

- Remove the dust container **5** from the dust compartment **6**. To do this, pull the dust container out by the green tab **4**.
- Open the dust container by taking out the filter on its narrow side. This is done by pulling the filter out of the dust container by the green lug **8** on the filter frame **7**.
- Empty the contents of the dust container using a brush, or clean it out with a conventional vacuum cleaner.

6.1.2 Cleaning the filter

The pleated filter material is covered by a pre-filter to protect it against severe contamination and damage. However, fine dust and fibres may accumulate after some time between the pre-filter and the pleated filter material. Therefore, we recommend cleaning the filter regularly with a conventional vacuum cleaner.

- Remove the filter by pulling it out of the dust compartment by the green lug **8** on the filter frame.
- Vacuum both sides of the filter **9** and/or clean it with a soft, dry cloth.



The fibres remaining under the pre-filter do not impair the performance of the filter as a whole. For optimum cleaning performance, we recommend replacing the filter with a new one once a year.

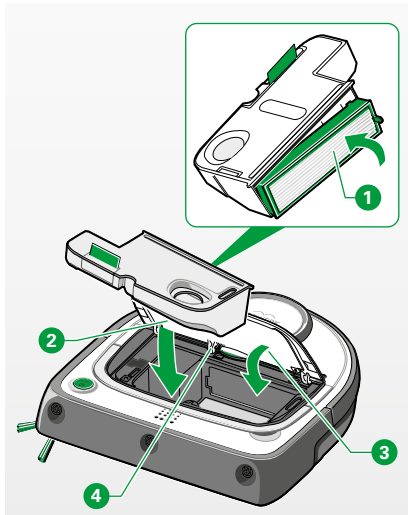


Figure 6.5 Reinstalling the dust container and filter in the dust compartment

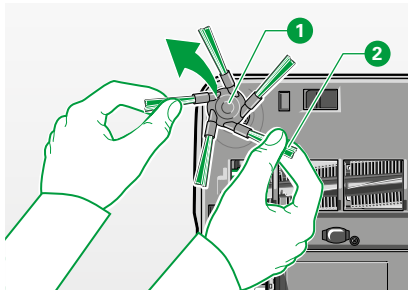


Figure 6.6 Taking off the side brush

6.1.3 Reinstalling the dust container and filter

- Insert the filter back into the dust container **1**.
- Insert the dust container with filter **2** back into the Kobold VR300 Robot Vacuum Cleaner.
- Press down on the dust compartment cover **3** and ensure that it is properly closed.



The dust compartment cover can be closed by simply pressing from the inside against the middle hinge **8**.

Note! Risk of damage from improper use!

- Never operate the Kobold VR300 Robot Vacuum Cleaner without the filter.

6.2 Cleaning the side brush



Warning! Risk of electric shock!

- Always switch the device off and disconnect the mains plug on the base station before all retrofitting, cleaning and maintenance work.

The side brush can simply be pulled away from the mounting point.

- Pull the side brush **1** up and off the drive axle by the green bristles **2** using both hands.
- Remove any dust and dirt from the side brush.
- Remove any lint, hair or other dirt from the drive axle.
- For this, it may be necessary to remove the brush cover (see Chapter “6.3 Cleaning the roller brush” on page 46).
- To reattach the side brush, align the centre of the side brush with the mounting point **1** and press it into position.

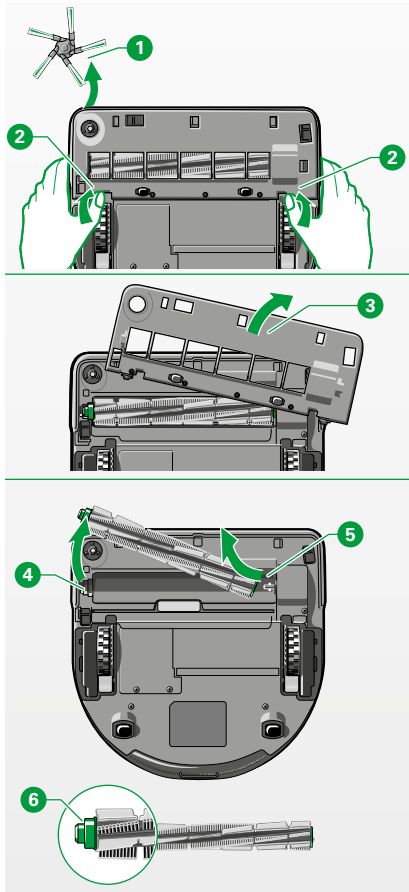


Figure 6.7 Removing the roller brush

6.3 Cleaning the roller brush



Warning! Risk of electric shock!

- Always switch the device off and disconnect the mains plug on the base station before all retrofitting, cleaning and maintenance work.

Note! Risk of damage from improper use!

- Never clean the roller brush using liquids. The roller brush is not dishwasher safe or waterproof.

Clean the roller brush if hair or threads have become wrapped around it.

REMOVING THE ROLLER BRUSH

- Turn the robot vacuum cleaner upside down.
- Remove the side brush **1** (see Chapter “6.2 Cleaning the side brush” on page 45).
- Using both hands, push the latches **2** on each side of the brush cover forward to unlock.
- Remove the brush cover **3**.
- First lift the left side of the roller brush out of the robot vacuum cleaner **4** and then pull the right side away from the axle **5** to remove the roller brush.

CLEANING THE ROLLER BRUSH

- Remove lint, hair and other dirt from the roller brush.
- Take care to ensure that the green bearing **6** and metal spherical bearing underneath it on the left-hand side of the roller brush do not come loose.

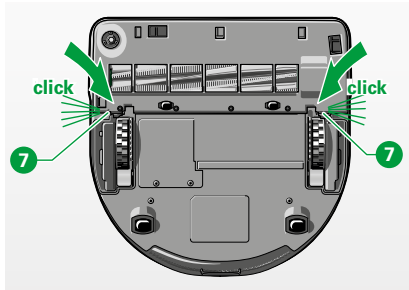


Figure 6.8 Audible latching of the brush cover

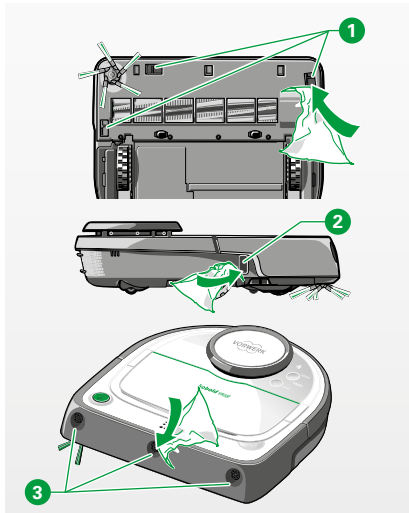


Figure 6.9 Cleaning the sensors

REINSTALLING THE ROLLER BRUSH AND BRUSH COVER:

- To reinstall the roller brush and the brush cover, follow the steps to remove the roller brush in the reverse order.
- Ensure that the latch clicks into place when putting the brush cover back on **7**.

6.4 Cleaning the sensors



Warning! Risk of electric shock!

- Always switch the device off and disconnect the mains plug on the base station before all retrofitting, cleaning and maintenance work.

Note! Risk of malfunction!

- Clean the sensors regularly (ideally each time the dust container is cleaned).
- Clean the floor sensors **1** on the underside of the Kobold VR300 Robot Vacuum Cleaner with a cotton bud or a soft, clean cloth, but never with pointed or sharp objects.
If the area of the sensors is very dirty, it can also be cleaned with a conventional vacuum cleaner.
- Clean the wall following sensor **2** on the right-hand side with a cotton bud or a soft, clean cloth.
- Clean the ultrasonic sensors **3** on the front of the robot vacuum cleaner with a cotton bud or a soft, clean cloth, but never with pointed or sharp objects.

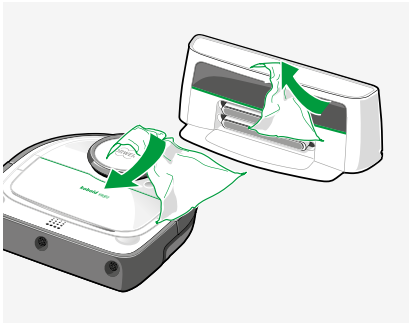


Figure 6.10 Cleaning the robot vacuum cleaner and the base station

6.5 Cleaning the robot vacuum cleaner and the base station

Note! Risk of damage from improper use!

- Do not immerse the robot vacuum cleaner and the base station in water.
- Use extreme care to avoid scratching the infrared window of the base station and do not cover it with stickers or other objects.
- Do not use abrasive cleaning pads, chemical agents or aggressive liquids such as benzene or acetone to clean the robot vacuum cleaner.



Warning! Risk of electric shock!

- Always switch the device off and disconnect the mains plug on the base station before all retrofitting, cleaning and maintenance work.

-
- Clean the robot vacuum cleaner and the base station with a soft, clean cloth.

7 SOFTWARE UPDATES

The software for the Kobold VR300 Robot Vacuum Cleaner is subject to continuous development and optimisation. To ensure that you benefit from these improvements, the latest versions of the software are available via our app.

Subscribe to our newsletter to be regularly informed about news and updates. You can of course also have new versions of the software installed at our Service Centers. For locations and opening hours, please visit our website or call our customer hotline (see Chapter “11 Service” on page 58).

8 TROUBLESHOOTING



Warning! Risk of electric shock and injury!

- Never attempt to repair the device yourself. Repairs to electrical appliances may only be carried out by a Vorwerk Customer Service Center, a workshop authorised by Vorwerk or a person with similar qualifications using original replacement parts in order to avoid hazards.

If your device does not function properly, it could be due to one of the following reasons:

THE LED DISPLAY...

POSSIBLE CAUSES AND RECTIFICATION

...flashes green (for approx. 5 seconds).	<p>You want to start cleaning and the battery is not fully charged.</p> <ul style="list-style-type: none"> • Press the start button again within 30 seconds to start cleaning. Bear in mind that the battery charge may not be sufficient for the entire cleaning cycle and the robot vacuum cleaner may discontinue cleaning to recharge. • Alternatively, charge your robot vacuum cleaner before starting cleaning.
...flashes orange.	<p>The cover on the dust container is not closed properly.</p> <ul style="list-style-type: none"> • Close the cover on the dust container until you hear it click. <p>Filter and/or dust container are missing.</p> <ul style="list-style-type: none"> • Insert the dust container with filter back into the robot vacuum cleaner.
...lights up orange.	<p>The dust container is full.</p> <ul style="list-style-type: none"> • Empty the dust container, clean the filter and reinstall the dust container including filter in the robot vacuum cleaner. • Clean the floor sensors with a soft, clean cloth, a cotton bud or a conventional vacuum cleaner. • You can clean the dust container and floor sensors by hand or using a conventional vacuum cleaner.

THE LED DISPLAY...

POSSIBLE CAUSES AND RECTIFICATION

<p>...flashes red.</p>	<p>The roller brush or side brush has stopped rotating.</p> <ul style="list-style-type: none"> • Remove lint, hair and other dirt from the brush. • Remove the brush and then reinstall it (see Chapter “6.3 Cleaning the roller brush” on page 46). <p>The bumper is jammed.</p> <ul style="list-style-type: none"> • Jiggle the bumper to release it.
<p>...lights up red</p>	<ul style="list-style-type: none"> • Contact your Vorwerk Customer Service Center (see Chapter “11 Service” on page 58).

FAULT

POSSIBLE CAUSE AND RECTIFICATION

<p>The cleaning performance of the robot vacuum cleaner has decreased.</p>	<p>The dust container is probably full.</p> <ul style="list-style-type: none"> • Empty the dust container and clean the filter. <p>The brushes are dirty.</p> <ul style="list-style-type: none"> • Clean the roller and side brushes (see Chapter “6.2 Cleaning the side brush” on page 45 and Chapter “6.3 Cleaning the roller brush” on page 46).
<p>The robot vacuum cleaner does not respond.</p>	<p>The batteries may be empty.</p> <ul style="list-style-type: none"> • Charge the robot vacuum cleaner on the base station (see Chapter “2.4 Setting up the base station” on page 21). • Make sure that the plug is properly connected to the jack on the base station. • Also make sure that the mains plug is properly connected to the power socket. <p>The robot vacuum cleaner will discharge if it is not docked on the base station.</p>

FAULT	POSSIBLE CAUSE AND RECTIFICATION
<p>The robot vacuum cleaner is not charging.</p>	<p>The base station and/or robot vacuum cleaner may not be properly connected to the power supply.</p> <ul style="list-style-type: none"> • Make sure that the plug is properly connected to the jack on the base station. • Also make sure that the mains plug is properly connected to the power socket. <p>If you do not charge the robot vacuum cleaner on the base station and have not switched it off using the “Shutdown robot” option (see Chapter “4.4 Switching off the robot vacuum cleaner” on page 34), the battery will run down after a few days.</p>
<p>The robot vacuum cleaner suddenly stops cleaning.</p>	<p>You have selected SPOT cleaning mode. In this mode, the robot vacuum cleaner stops after the set area has been cleaned.</p> <ul style="list-style-type: none"> • If you want to clean the rest of the room, select normal cleaning mode (see Chapter “4.2 Selecting a cleaning mode” on page 30). <p>The sensors may be covered or dirty.</p> <ul style="list-style-type: none"> • Make sure that the sensors are not covered. • If the sensors are dirty, clean them with a soft, clean cloth or cotton bud (see Chapter “6.4 Cleaning the sensors” on page 47). <p>In large, empty rooms, navigation may be a problem if there are no furnishings or walls within a radius of 2 – 3 metres.</p> <p>On thick pile carpets, the wheels of the robot vacuum cleaner may spin and lead to navigation errors.</p> <ul style="list-style-type: none"> • Block off the carpet with the magnetic strip. <p>If the sensors are dirty, the robot vacuum cleaner may interpret dark or dense carpets as a drop-off. Glass floors are generally interpreted as a drop-off.</p> <ul style="list-style-type: none"> • Clean the floor sensors regularly.
<p>The robot vacuum cleaner does not work as expected.</p>	<p>You have customised your robot vacuum cleaner using the app (e.g. changed the size of the SPOT cleaning area).</p> <ul style="list-style-type: none"> • Check the app for the settings you have selected.

FAULT

The robot vacuum cleaner does not return to the base station after cleaning.



If faults cannot be rectified, please contact the Vorwerk Customer Service Center (see Chapter “11 Service” on page 58).

For more information, visit:
www.vorwerk-kobold.com

POSSIBLE CAUSE AND RECTIFICATION

- Check whether the protective film has been removed from the infrared window of the base station.

You may have started the cleaning process in normal cleaning mode from a location other than the base station.

If you start the robot vacuum cleaner at a different location in the room, it returns there after cleaning.

Cleaning may have been interrupted, and the robot vacuum cleaner may have been switched back on in a different place in the room.

The sensors on the base station or several sensors on the robot vacuum cleaner may be covered or dirty (see Chapter “6.5 Cleaning the robot vacuum cleaner and the base station” on page 48).

- Remove the objects covering the sensors on the robot vacuum cleaner and clean the sensors.

The base station may be located behind a wall or other obstacle that is blocking the signal.

- Set up the base station in a different location.
- Make sure that there are no obstacles within an area of 0.5 metres on either side of the base station or within 0.3 metres above it.

You may have cleaned an area using SPOT cleaning mode.

Once the robot vacuum cleaner has cleaned the area, it automatically returns to the starting position and stops there. In normal cleaning mode, the robot vacuum cleaner automatically returns to the base station.

The base station setup may not be optimal.

Test whether the base station setup is optimal:

- Start SPOT cleaning from the base station. If the robot vacuum cleaner cannot find the base station afterwards, it is not ideally positioned. Please try this again in a different location.

9 DISPOSAL AND ENVIRONMENTAL PROTECTION

9.1 Disposing of the device



As the owner of an electrical or electronic device, you are not permitted by law (under Directive 2012/19/EU of the European Parliament and of the Council of 4 July 2012 on waste electrical and electronic equipment (WEEE) and under the revised German Electrical and Electronic Equipment Act of 20 October 2015) to dispose of this device or its electrical/electronic accessories in unsorted household waste.

- Use the free return options provided instead.
- Contact your local council for more information.
- You can also hand the device over to a Vorwerk Customer Service Center.

9.2 Information on the disposal of the battery



The following information is intended for the disposal company, not for you as the user!

The integrated lithium-ion batteries contain substances that may be harmful to the environment. Before scrapping the robot vacuum cleaner, the batteries must be removed from the device and taken to a battery collection centre.

- Only remove the batteries when they are completely empty. The battery contacts must not come into contact with metal under any circumstances.



Caution! Risk of injury due to battery leakage!

Leaking batteries must not come into contact with the eyes or mucous membranes.

- Wash your hands and rinse your eyes with clean water. If irritation persists, seek medical attention.

REMOVING THE BATTERIES FROM THE KOBOLD VR300 ROBOT VACUUM CLEANER



The information that follows is intended for the disposer of the robot vacuum cleaner, not for you as the user!



Only remove the batteries when they are completely empty.

The battery contacts must not come into contact with metal under any circumstances.

Remove the batteries from the device as follows:

- Let the robot vacuum cleaner run until it stops.
- Check whether the batteries are definitely fully discharged by attempting to switch the device back on. If the motor starts, repeat the entire process.
- Remove the 2 screws from the battery compartment cover.
- Remove the battery compartment cover.
- Remove the batteries and take off the battery plugs.

9.3 Disposing of the packaging

The packaging is an important part of our product. It protects our devices against damage during transportation and reduces the risk of a device fault. For this reason, we cannot avoid using packaging. If you need to return or send in your device to our service or customer service department during or after the warranty period, the original packaging provides the best protection against damage in transit.

If, however, you want to dispose of the packaging, you may do so at any time and without restriction through your local facilities (waste paper container, yellow bin, recycling depot, waste paper collection point, etc.). Vorwerk commissions authorised licensors for this. If you have any further queries, please contact the Vorwerk Customer Service Center (see Chapter “11 Service” on page 58).

9.4 Information on environmental protection

Preserving nature and protecting the environment is an important corporate objective for Vorwerk.

LESS PACKAGING

We use only environmentally friendly material, which is recycled if disposed of correctly. We are actively involved in cutting back on waste packaging during the development stages and are committed to its disposal and recycling.

SAVING ENERGY

Vorwerk products protect the environment. They consume little energy yet provide high suction performance.

ENVIRONMENTALLY FRIENDLY PRODUCTION

We place great emphasis on protecting the environment in the production of our products. We use recyclable plastics and paints. We deliberately avoid using polluting flame retardants.

Our instruction manuals are made from sustainably managed forests and are bleached without chlorine.

RECYCLABLE MATERIAL

The material in our products is almost entirely recyclable.

We largely eliminate the use of PVC.

When designing our products, we try to use 'unmixed' materials.

The substances used can later be separated accordingly at modern facilities without excessive energy consumption. To make them even easier to recycle, we have labelled most of our plastic components.

10 WARRANTY

Please refer to your contract documents for any warranty services.

11 SERVICE


Our service representatives are happy to help you.



www.vorwerk-kobold.com

**KOBOLD VR300
ROBOT VACUUM
CLEANER AND BASE
STATION**

12 TECHNICAL DATA

Kobold VR300 Robot Vacuum Cleaner	
Safety symbol	
Housing	High-quality, recyclable plastic
Motor	Maintenance-free DC motor
Fan	Single-stage fan
Base station input voltage	100 – 240 volts alternating current, 50/60 Hertz
Volume flow	12 – 13 l/s
Consumption	total approx. 85 W (depending on floor covering) / approx. 65 W (ECO mode) - Fan: 50 W (ECO mode 30 W) - Brush: approx. 30 W - Standby approx. 0.5 W
Battery capacity	max. 60 minutes/90 minutes (depending on cleaning mode, floor covering and configuration of living space)
Weight	approx. 5 kg (device and base station)
Noise emission	70 dbA (measured under free field conditions on carpet)
Battery pack	Li-ion 14.4 V; approx. 84 Wh, nominal
Battery charge times	After max. 1 hour: cleaning is possible again. After 3.5-4 hours: full charging of completely empty battery.
Battery charging cycles / battery life	Approx. 70% capacity after approx. 800 full cycles
Base station	Type B-VR300
IEC/EN modes	Accessible via the Kobold Robot app by clicking the robot icon five times in the "Device Information" / "Robot Settings" menu.

13 DECLARATION OF CONFORMITY

Vorwerk Elektrowerke GmbH & Co. KG hereby declares that the radio equipment type Kobold VR300 Robot Vacuum Cleaner is in compliance with the Directive R&TTE 1999/5/EC.

The full text of the EU declaration of conformity is available online at the following address: www.vorwerk.com

kobold

VR300 ROBOT VACUUM CLEANER



Choose quality.
Vorwerk quality

Vorwerk UK
Ashurst Manor
Church Lane
Sunninghill
Ascot
SL5 7DD
www.kobold.vorwerk.co.uk

