

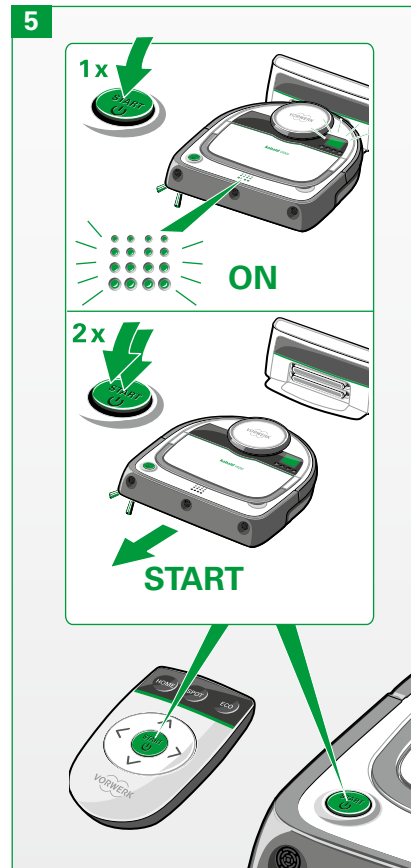
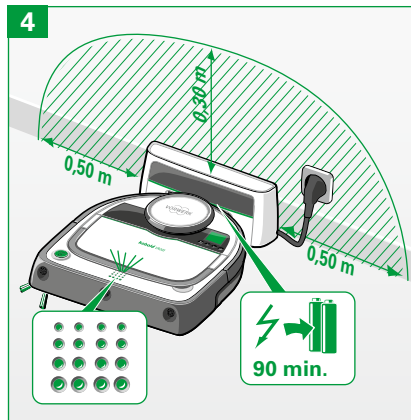
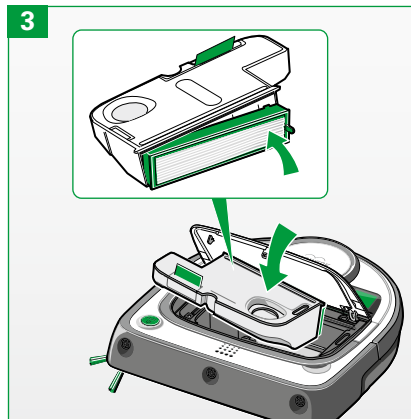
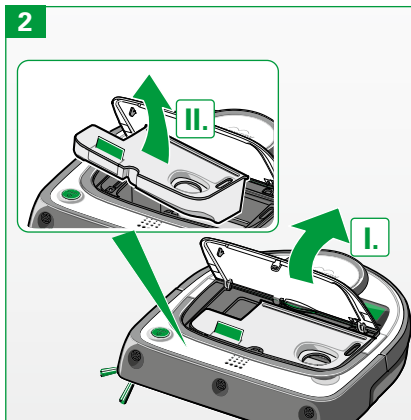
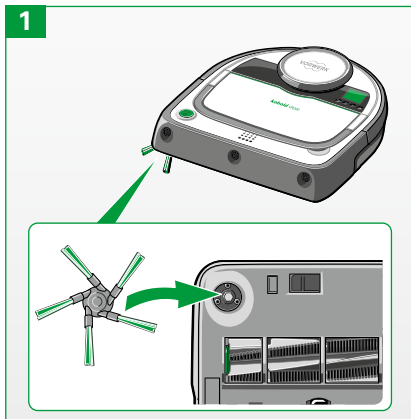
---

**kobold**

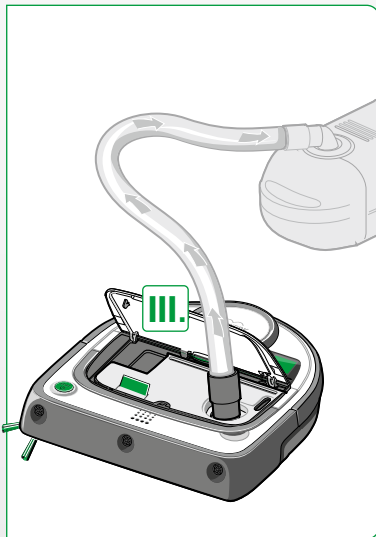
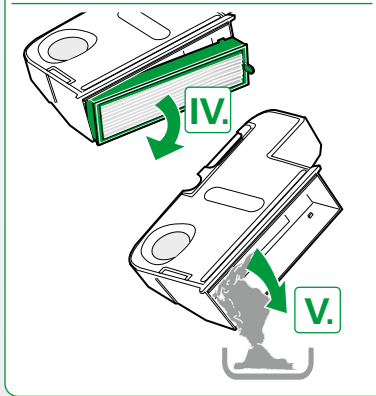
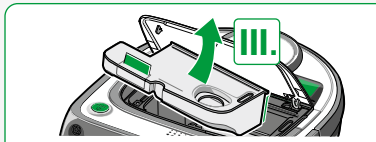
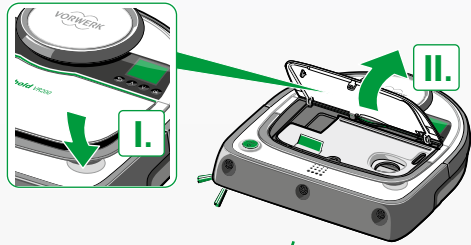
**INSTRUCTIONS FOR USE**  
**KOBOLD VR200**  
**ROBOT VACUUM**  
**CLEANER**  
**AND ACCESSORIES**



# QUICK START

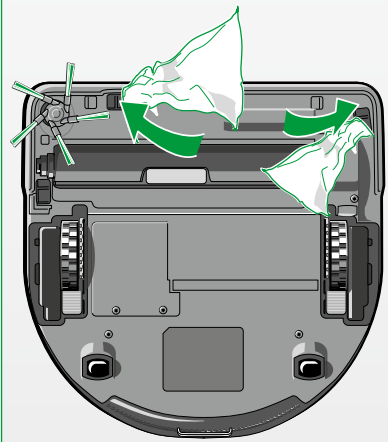
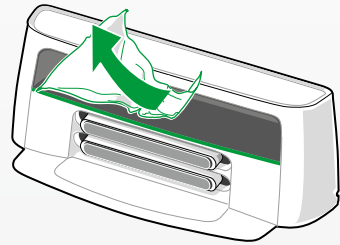


6

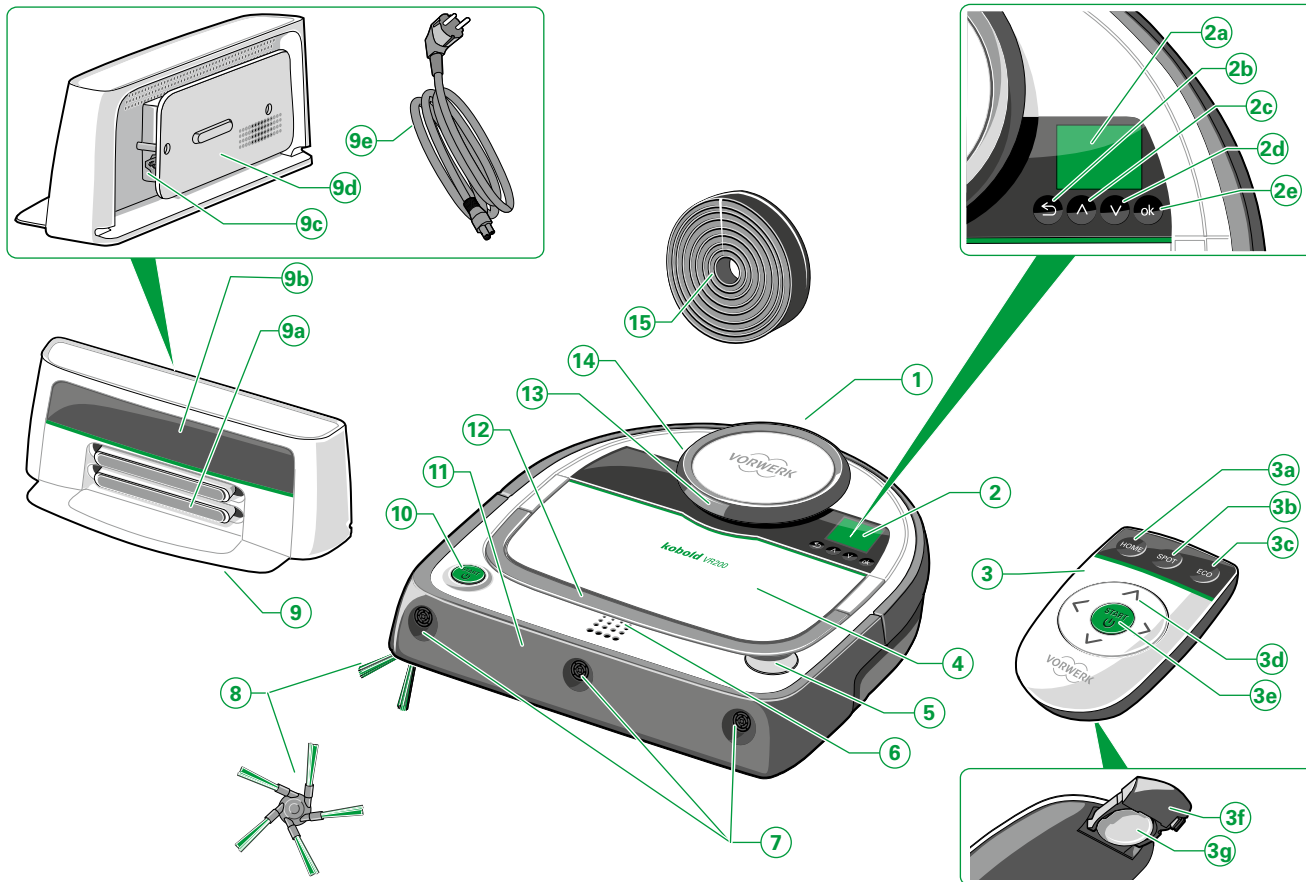


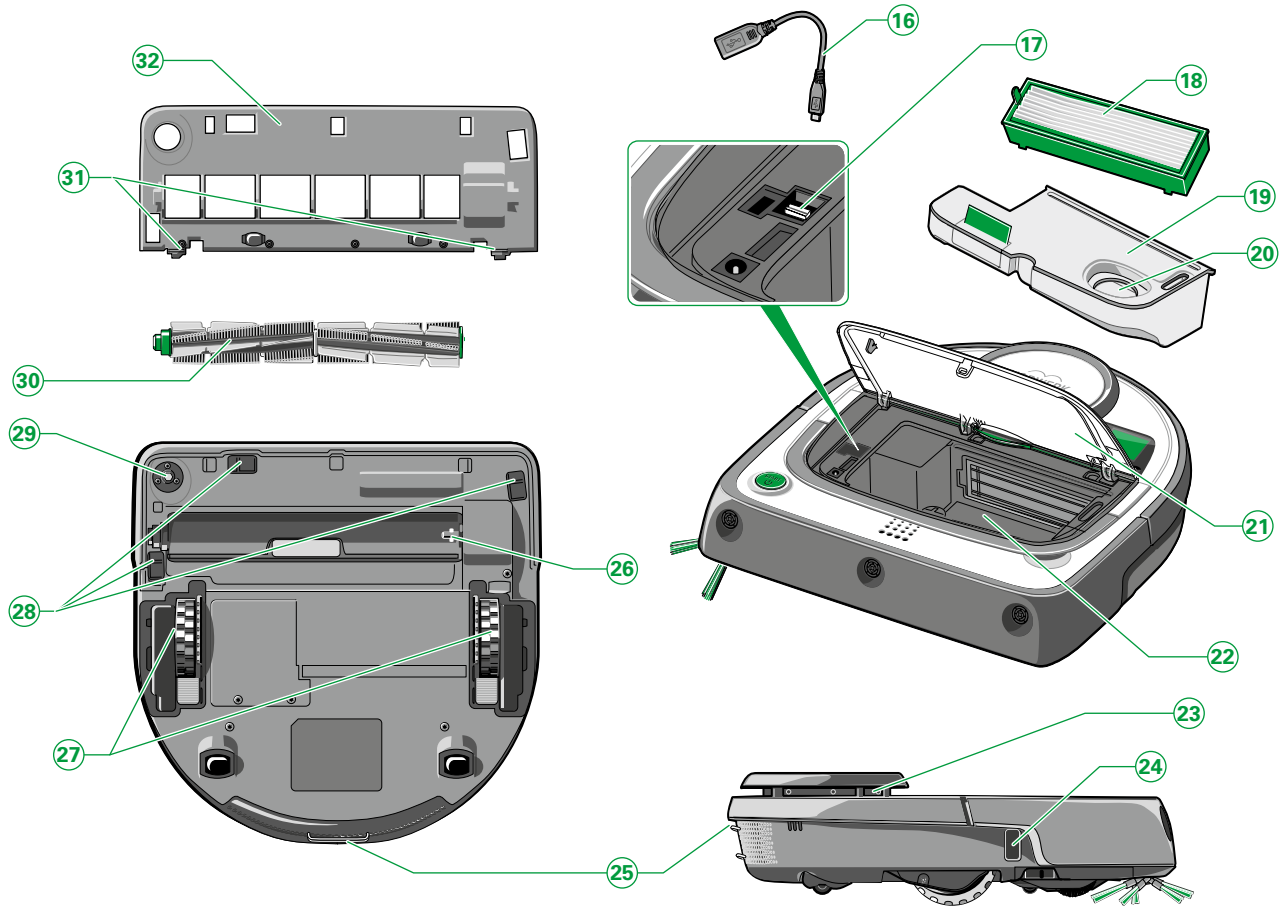
7

CLEAN



## PRODUCT OVERVIEW





## LEGEND PRODUCT OVERVIEW

Item	Kobold VR200 Robot Vacuum Cleaner and accessories
<b>1</b>	Robot Vacuum Cleaner
<b>2</b>	Operator panel
<b>2a</b>	Display window
<b>2b</b>	Back button
<b>2c</b>	“Up” arrow / previous selection
<b>2d</b>	“Down” arrow / next selection
<b>2e</b>	Selection button (OK)
<b>3</b>	Remote control
<b>3a</b>	HOME button (back to base station)
<b>3b</b>	“Spot Cleaning” mode
<b>3c</b>	ECO option
<b>3d</b>	Direction buttons for remote control
<b>3e</b>	Start/stop button (on/off)
<b>3f</b>	Battery compartment (open)
<b>3g</b>	CR2025 button cell
<b>4</b>	Dust compartment / dust compartment cover
<b>5</b>	release button for dust compartment cover
<b>6</b>	LED operating display
<b>7</b>	3 ultrasonic sensors
<b>8</b>	Side brush
<b>9</b>	Base station
<b>9a</b>	Base station charging contacts
<b>9b</b>	Infrared window
<b>9c</b>	Charging receptacle

<b>9d</b>	Cable winding
<b>9e</b>	Mains cable
<b>10</b>	Start/stop button
<b>11</b>	Bumper
<b>12</b>	Fold-down carrying handle
<b>13</b>	Laser scanner
<b>14</b>	Bumper on laser navigation sensor
<b>15</b>	Magnetic strips
<b>16</b>	USB adapter
<b>17</b>	Micro-USB connection (under the rubber plug)
<b>18</b>	Filter
<b>19</b>	Dust container
<b>20</b>	Suction opening
<b>21</b>	Dust compartment cover
<b>22</b>	Dust compartment
<b>23</b>	Laser scanner
<b>24</b>	Wall following sensor
<b>25</b>	Charging contacts
<b>26</b>	Round brush holder
<b>27</b>	Wheels with climbing assist
<b>28</b>	3 floor sensors
<b>29</b>	Side brush holder
<b>30</b>	Round brush
<b>31</b>	Brush cover locking mechanism
<b>32</b>	Brush cover

## PRELIMINARY REMARKS

Congratulations on your new **Kobold VR200 Robot Vacuum Cleaner**. The lightweight and manoeuvrable Robot Vacuum Cleaner is going to make your home clean and shiny. This innovative device ensures that your floors are kept effortlessly clean. Clean floors are important, but vacuuming is hard work and takes a lot of time. The Robot Vacuum Cleaner does this work for you – every day if you want. The Robot Vacuum Cleaner moves around on its own and cleans your floors, even when you are not home.

## BEFORE YOU START

- Read the user manual attentively before using the Kobold VR200 Robot Vacuum Cleaner with accessories for the first time.
- Retain the user manual for future reference. It is an important part of the Robot Vacuum Cleaner and must be included with the product if you provide the Robot Vacuum Cleaner to other persons.

## SIGNS AND SYMBOLS

You will find the symbols below in the text, with the following meanings:



Warning symbol



Reference to Vorwerk  
Customer Service/Support



Symbol for a tip



Reference to the Vorwerk website



Laser




Indoor use only.



Read user manual before Charging

- Instruction

## CONTENTS

<b>1</b>	<b>For your safety</b> 	<b>9</b>		<b>8</b>	<b>Warranty</b>	<b>62</b>	
1.1	Intended use	9	3.7	Cleaning area and navigation of the Robot Vacuum Cleaner			
1.2	Hazard notices	10	3.8	Remote control			
1.3	Hazard levels	16	3.9	Other settings			
			3.10	Status indicators on the display			
<b>2</b>	<b>First steps</b>	<b>17</b>			<b>9</b>	<b>Service</b>	<b>62</b>
2.1	Preparing your household for the Robot Vacuum Cleaner	17	<b>4</b>	<b>Maintenance</b>			
2.2	Carrying the Kobold VR200 Robot Vacuum Cleaner	18	4.1	Emptying the dust container and cleaning the filter			
2.3	Installing the Kobold VR200 Robot Vacuum Cleaner	18	4.2	Cleaning the side brush			
2.4	Setting up the base station	20	4.3	Cleaning the round brush			
2.5	Connecting the mains cable	20	4.4	Cleaning the sensors			
2.6	Charging the Kobold VR200 Robot Vacuum Cleaner	21	4.5	Cleaning the Robot Vacuum Cleaner and the base station			
2.7	LED operating display	24			<b>5</b>	<b>Software updates</b>	<b>51</b>
2.8	Remote control	24	<b>6</b>	<b>Troubleshooting</b>			
					<b>7</b>	<b>Disposal and environmental protection</b>	<b>58</b>
<b>3</b>	<b>Operation</b>	<b>26</b>	7.1	Device disposal			
3.1	Operator panel overview	26	7.2	Information for disposal of the battery			
3.2	Putting into operation	26	7.3	Disposing of the packaging			
3.3	Select a cleaning mode	28	7.4	Environmental protection information			
3.4	Pause	33					
3.5	Standby mode	34					
3.6	Switching off the Robot Vacuum Cleaner	34					
					<b>10</b>	<b>Technical data</b>	<b>63</b>



# 1 FOR YOUR SAFETY ⚠

EN

The greatest possible safety is a characteristic of Vorwerk products. However, the product safety of the Kobold VR200 Robot Vacuum Cleaner and its accessories can only be assured if you observe the information in this section.

## 1.1 Intended use

### Notice!

This appliance can be used by children aged from 8 years and above and persons with reduced physical, sensory or mental capabilities or lack of experience and knowledge if they have been given supervision or instruction concerning use of the appliance in a safe way and understand the hazards involved. Children shall not play with the appliance. Cleaning and user maintenance shall not be made by children without supervision.

### KOBOLD VR200 ROBOT VACUUM CLEANER

The Robot Vacuum Cleaner is intended exclusively for dust removal in household use. The Robot Vacuum Cleaner may only be used with the corresponding Kobold accessories.

---

## 1.2 Hazard notices

---

### Notice!

- Read the user manual attentively before using the Robot Vacuum Cleaner for the first time.
  - Observe the information below in particular.
  - Retain the user manual for future reference. It is an important part of the Kobold VR200 Robot Vacuum Cleaner and must be included with the product if you provide the Robot Vacuum Cleaner to other persons.
- 

### Risk of electric shock!

- Always switch off the device and disconnect the mains plug from the base station before all changeover, cleaning and maintenance tasks.
- Never pull the mains plug from the outlet by the cord, only by the plug.
- Never attempt to repair the device yourself. We recommend having repairs to electric appliances carried out exclusively by your authorised Vorwerk Customer Service Centre.
- Do not insert any sharp objects into the electrical contacts.
- Do not modify the contacts.
- Never carry the base station by the cord.
- Do not continue using the device if it or the cord is damaged or in case of malfunctions.
- In case of damage, contact your nearest Vorwerk Customer Service Centre.
- Do not clean the Kobold VR200 Robot Vacuum Cleaner, base station and mains cable in water or other liquids.

- Do not use the Robot Vacuum Cleaner on damp floors or where there is a risk that the device may come into contact with liquids or be submersed in water.
  - Do not use the Robot Vacuum Cleaner in damp environments such as a wet bathroom.
  - Never use the Robot Vacuum Cleaner to pick up water or liquids.
  - Do not use the Robot Vacuum Cleaner in danger areas, e.g. close to open fireplaces, showers or pools.
  - Ensure that the mains cable is not damaged, bent or twisted. Do not put heavy objects on it. This could damage the mains cable and cause a fire or electric shock.
- 

### **Risk of fire!**

- Do not use the Robot Vacuum Cleaner to pick up glowing embers or cigarette butts.
  - Never expose the batteries to open flame or an external heat source.
  - Never use the Robot Vacuum Cleaner in rooms with burning candles or lamps on the floor.
  - Secure cables of electric equipment that are exposed or hanging down (e.g. on table lamps). These could be pulled down by the connecting cables, causing damage or a fire.
  - Do not let the Robot Vacuum Cleaner drive over recessed floor lamps. Stopping over a lamp could cause damage to the robot and, in the worst case, a fire .
  - Ensure that the mains cable is not damaged, bent or twisted. Do not put heavy objects on it. This could damage the mains cable and cause a fire.
- 

### **Explosion hazard!**

- Do not vacuum up explosive or readily inflammable substances.
  - Never throw the Robot Vacuum Cleaner into an open fire.
-

---

**Risk of injury!**

- Never vacuum body parts. Do not vacuum in the vicinity of children or pets. Never reach into the rotating components.
- 

**Risk of injury due to pinching!**

- Keep your distance from the moving components of the Robot Vacuum Cleaner.
- 

**Risk of damage!**

- Remove light-weight, moveable objects from the work area. These could be dragged along by the Kobold VR200 Robot Vacuum Cleaner and, depending on their nature, damage the device or the floor.
  - Remove or secure any easily movable rugs or carpets in front of stairs. If the rugs or carpets move, they may cover the sensors of the Robot Vacuum Cleaner which could cause it to fall down.
  - Never start the device directly next to a potential collision site. Always ensure it is positioned at least 1 m away from such a site in order to guarantee the floor sensors function correctly.
  - Secure cables that hang down or are exposed (e.g. on floor lamps).
- 

**Risk of damage from improper use!**

- We recommend only using original Kobold parts.
- Only use the B-VR200 base station.
- Use the base station exclusively with the alternate voltage specified on the type plate and a connection that was properly installed by a specialist.
- Do not use the Kobold VR200 Robot Vacuum Cleaner if the mains cable, battery or the Robot

Vacuum Cleaner itself is damaged or defective, or if the Robot Vacuum Cleaner is not fully assembled.

- If the mains cable is defective, the corresponding part may only be replaced by the Vorwerk Service Centre, a workshop authorised by Vorwerk or a person with similar qualifications, with an original replacement part, in order to avoid hazards.
- Never attempt to repair the Robot Vacuum Cleaner yourself.
- The Robot Vacuum Cleaner is suitable exclusively for use in indoor rooms.
- The Robot Vacuum Cleaner is only intended for floor cleaning.
- Do not allow children to play with the Robot Vacuum Cleaner.
- Keep children and pets away from the Kobold VR200 Robot Vacuum Cleaner, and do not let them stand or sit on the Robot Vacuum Cleaner.
- Do not vacuum up Kobosan active or other powdered cleaning agents with the Robot Vacuum Cleaner.
- If the floor plate is damaged, or the sensor window scratched, contact your Vorwerk Customer Service Centre.
- Do not vacuum up very fine sand, chalk, cement dust or similar. This can plug the filter pores.
- Never use the Robot Vacuum Cleaner without a filter. This could damage the motor and shorten the service life of the Robot Vacuum Cleaner.
- To charge the Kobold VR200 Robot Vacuum Cleaner, only use the original mains cable and base station supplied by Vorwerk in the scope of delivery.
- Charge your Robot Vacuum Cleaner at least once a year to avoid deep discharge, which damages the battery.

- 
- Do not cover the infrared window of the base station with stickers or by putting objects in front of it. If you do, the Robot Vacuum Cleaner is no longer able to communicate with the base station.
  - Do not cover the sensors on the Robot Vacuum Cleaner. Doing so may mean that the Robot Vacuum Cleaner can no longer navigate and position itself.
  - Only use the remote control to operate the Robot Vacuum Cleaner as long as it is in sight.
  - Do not allow the Robot Vacuum Cleaner to drive towards drop-offs when operating it with the remote control.
  - The ability of the Kobold VR200 Robot Vacuum Cleaner to clean high pile carpet is limited. Only use the Robot Vacuum Cleaner on carpets with a pile height up to 15 mm. It is necessary to test carpets with a pile height greater than 15 mm beforehand as they may hinder the movement and cleaning ability of the Robot Vacuum Cleaner. Mark off such carpets where necessary with the magnetic strip. The Robot Vacuum Cleaner may move more slowly on carpets than on hard floor coverings.
  - The Kobold VR200 Robot Vacuum Cleaner is not approved for cleaning worktops or ceramic glass cooktops.
  - Keep breakable, light and loose objects out of range of the Robot Vacuum Cleaner.
  - Secure curtains, tablecloths and cords in the work area of the Robot Vacuum Cleaner.
  - Clean the floor sensors regularly as described in this manual. If the floor sensors are dirty, the Kobold VR200 Robot Vacuum Cleaner may fall down stairs or landings. This can cause severe damage to the device.
  - Keep the magnetic strip away from strong, external magnetic fields. It may become damaged or demagnetised.
-

### LASER NAVIGATION SENSOR

- The navigation sensor contains a class 1 rotating laser according to [IEC 60825-1:2014 / EN 60825-1:2014](#).

---

#### The following rules of conduct generally apply for lasers:



- Switch off the Robot Vacuum Cleaner prior to all changeover tasks.
- Do not aim the laser beam at other persons.
- Do not look at the direct or reflected laser beam.
- Modifications (changes) or attempts to repair the device and especially the navigation sensor are prohibited.

---



The device complies with the safety regulations of the country in which it has been sold by an authorised Vorwerk organisation. If the device is used in another country, compliance with the local safety standards cannot be guaranteed.

Vorwerk therefore assumes no liability for any resulting safety risks for the user.

### 1.3 Hazard levels

- For your safety, also observe the hazard notices in the text of the sections that follow.

The hazard notices in the following sections are identified by the warning symbol and/or a signal word indicating a hazard level:

Hazard level	Warning symbol	Signal word	Possible hazards
3		<b>Warning!</b>	- Risk of electric shock - Risk of fire - Explosion hazard
2		<b>Caution!</b>	- Risk of injury
1		<b>Notice!</b>	- Risk of damage due to improper use - Property damage due to improper use



## 2 FIRST STEPS

In this section, you will learn how to set up your Kobold VR200 Robot Vacuum Cleaner for use. You will learn about the basic functions of your Robot Vacuum Cleaner and how to handle the device.

### 2.1 Preparing your household for the Robot Vacuum Cleaner

Your Kobold VR200 Robot Vacuum Cleaner has certain safety functions. Nevertheless, you should observe the following before using your Robot Vacuum Cleaner:



**Warning! Risk of electric shock!**

- Ensure that the Robot Vacuum Cleaner can never drive over connecting cables or other cables lying on the floor or hanging down.



**Caution! Risk of injury due to falling objects!**

- Remove or secure lightweight, breakable and moveable objects (e.g. vases, curtains or similar).

---

**Notice! Risk of damage due to improper use!**

- The ability of the Robot Vacuum Cleaner to clean high pile carpet is limited. Only use the Robot Vacuum Cleaner on carpets with a pile height up to 15 mm. Remove carpets with a pile height over 15 mm before cleaning or mark them off with magnetic strips.
-

- i** The Kobold VR200 Robot Vacuum Cleaner is not fully charged on delivery. The Robot Vacuum Cleaner must therefore be charged before using it for the first time (see Chapter “2.6 Charging the Kobold VR200 Robot Vacuum Cleaner” on page 21).

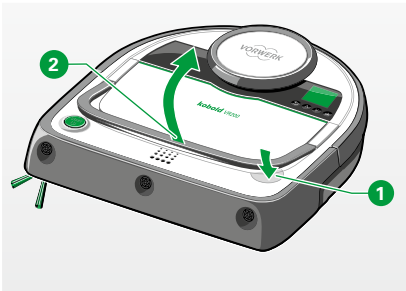


Figure 2.1 Folding up the carrying handle

## 2.2 Carrying the Kobold VR200 Robot Vacuum Cleaner

- Lightly press the unlock button for the **1** dust compartment cover. Doing so will enable you to lift up the carrying handle. **2**.

- i** The carrying handle can only be lifted up to an angle of up to 45 degrees. This is for stability reasons and to prevent dirt from accidentally falling out of the dust container.

## 2.3 Installing the Kobold VR200 Robot Vacuum Cleaner

### 2.3.1 Removing the transparent protective films

- Remove the transparent protective films from the Kobold VR200 Robot Vacuum Cleaner and the base station.

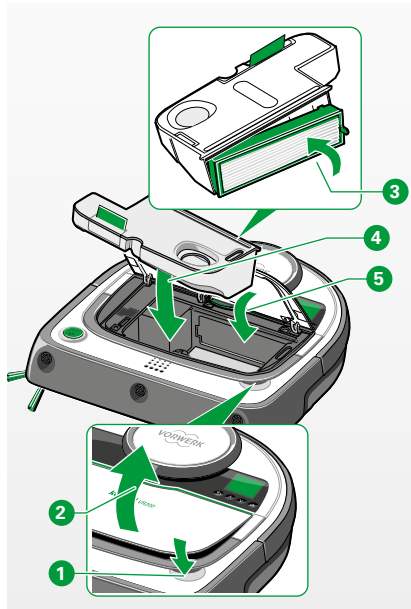


Figure 2.2 Inserting the filter

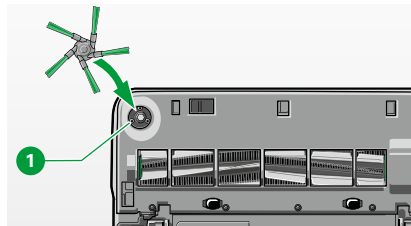


Figure 2.3 Installing the side brush

### 2.3.2 Inserting the filter

**Note! Risk of damage from improper use!**

- Never operated the device without a filter.

- Press the release button for the **1** dust compartment cover **2** and open the dust compartment on the Robot Vacuum Cleaner.
- Use the filter to help close the vacuum container **3**. The green lug on the filter frame points to the right front.
- Insert the dust container with filter **4** into the Kobold VR200 Robot Vacuum Cleaner.
- Press down the dust compartment cover **5** and ensure that it is properly closed.

**Notice! Risk of damage due to improper use!**

- Never operate the device without the filter.

### 2.3.3 Installing the side brush

- Align the side brush with the side brush holder on the **1** bottom of the Robot Vacuum Cleaner.

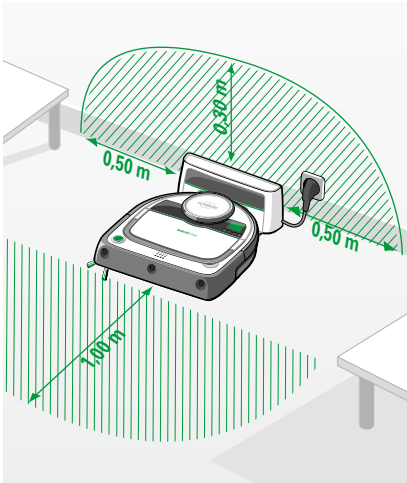


Figure 2.4 Installing the mains cable

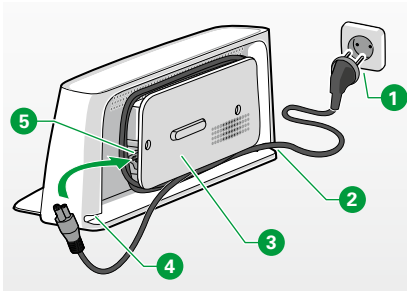


Figure 2.5 Connecting the mains cable

## 2.4 Setting up the base station

**Note! Risk of damage from improper use!**

- Only use the B-VR200 base station.

- Place the base station on a level surface next to a wall so that the charging contacts and infrared window are freely accessible for the Kobold VR200 Robot Vacuum Cleaner (Figure 2.4). Ideally there should be no height differences or obstacles 0.3 m above, 0.5 m to the left and 0.5 m to the right of the base station.
- Ensure that there is a level, freely accessible area approx. 1 m in front of the Robot Vacuum Cleaner.
- Do not set up the base station underneath furniture, or on stairs or landings.
- Connect the mains plug to the outlet.

## 2.5 Connecting the mains cable

- Connect the mains cable to the charging receptacle on the **5** base station. Ensure it is fully inserted in the base station.
- Wrap the cable around the cable holder **3**.
- Ensure that you leave enough cable protruding from the lower opening in the housing (left **4** or right **2**) so that you can connect the mains cable with mains plug to the **1** outlet.

## 2.6 Charging the Kobold VR200 Robot Vacuum Cleaner

### Note! Risk of damage from improper use!

- The Kobold VR200 Robot Vacuum Cleaner can only be charged at temperatures between 0°C and 45°C.
- Extreme heat or cold extends the charging time and/or can cause damage to the battery.
- Only charge the Kobold VR200 Robot Vacuum Cleaner with the supplied B-VR200 base station.

The Kobold VR200 Robot Vacuum Cleaner is not fully charged on delivery.

- Charge the Robot Vacuum Cleaner before using it for the first time.



As soon as the LED operating indicator is solid green (see „Figure 2.6 Charging the Robot Vacuum Cleaner“), the Robot Vacuum Cleaner is operational. This can take approximately 1.5 hours.

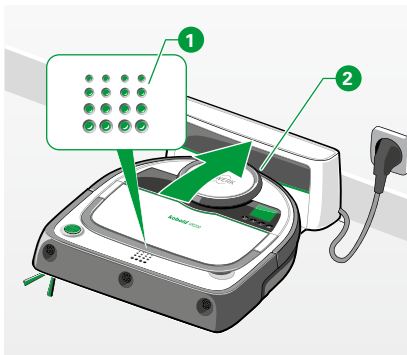


Figure 2.6 Charging the Robot Vacuum Cleaner

### 2.6.1 Charging on the base station

To charge your Robot Vacuum Cleaner before using it for the first time or when the battery is drained, please proceed as follows:

- Place the Robot Vacuum Cleaner in front of the base station which is connected to the mains network.

*The LED operating indicator 1 begins to flash when the Robot Vacuum Cleaner is placed on the base station correctly.*

- Ensure that the charging contacts **2** on the rear of the Robot Vacuum Cleaner touch the charging contacts on the base station.

*During the charging process, the battery symbol on the display becomes animated and the LED operating indicator pulse. As soon as the battery is fully charged, the LED operating indicator **1** will remain solid green.*

**i** The full battery charge level is only reached after about 2-3 full charging cycles, since the batteries first have to adapt to the equipment characteristics.



Figure 2.7 Changing the display to charging

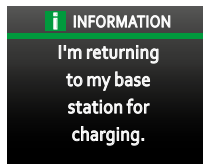


Figure 2.8 Display during automatic charging

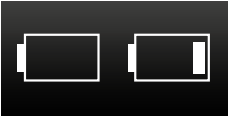



## 2.6.2 Automatic charging

Once floor cleaning is complete or when the battery charge level drops too low, the Kobold VR200 Robot Vacuum Cleaner automatically returns to the base station for charging. When the Robot Vacuum Cleaner returns to the base station, **“I’m returning to my base station for charging”** is shown on the display. When the Robot Vacuum Cleaner is connected to the base station, the operating display flashes green.

As soon as the batteries are fully charged, the operating display is lit up steady in green. The battery symbol in the status bar of the display also provides information on the battery charge level (see Chapter “2.6.3 Battery level and Operating time” on page 23 and “2.7 LED operating display” on page 24.

- i** The Robot Vacuum Cleaner only returns to the base station automatically if floor cleaning was started at the base station.
- i** If you move the Robot Vacuum Cleaner manually during cleaning, the Robot Vacuum Cleaner may not be able to find the base station.
- i** The robot can only be restarted when the battery charge level is at least 25 %.

### 2.6.3 Battery level and Operating time

Display	Battery level	Important information on your Kobold VR200 Robot Vacuum Cleaner	Operating time
	Less than 25%	You must charge the Robot Vacuum Cleaner before it can start cleaning (see Chapter “2.6.1 Charging on the base station” on page 21).	You Robot Vacuum Cleaner is not ready to start cleaning.  However, the battery level is high enough to alter settings on the display (e.g. set the time).
	Between 25% and 80%	You can start the Robot Vacuum Cleaner manually.  If the battery level becomes too low while cleaning, the Robot Vacuum Cleaner will automatically return to the base station for charging. As soon as it has reached a battery level of 81% again, it will automatically carry on with cleaning. However, the robot can also be restarted during the charging process.   Please note that the running time of the robot vacuum is reduced if the battery is not full when it is started.	Your Robot Vacuum Cleaner is ready for operation.  The operating time is: <b>10 to 45 minutes*</b>
	Between 81 % and 100 %	If your Robot Vacuum Cleaner is parked in standby at its base station, its battery level will vary between 81% and 100% for technical reasons, even if it has been charging at the base station for a long period.	Your Robot Vacuum Cleaner is ready for operation.  Its running time is: <b>Up to 60 minutes*</b>

\* The actual running time of the Kobold VR200 Robot Vacuum Cleaner can vary depending on the type of flooring it is cleaning or how warm it is.  
If it is cleaning a carpet, or it is very warm in summer, it will need more battery power.



When the ECO option is active, the Robot Vacuum Cleaner has a running time of up to 90 minutes. The ECO option has to be set manually (see Chapter “3.3.3 ECO option” on page 31).

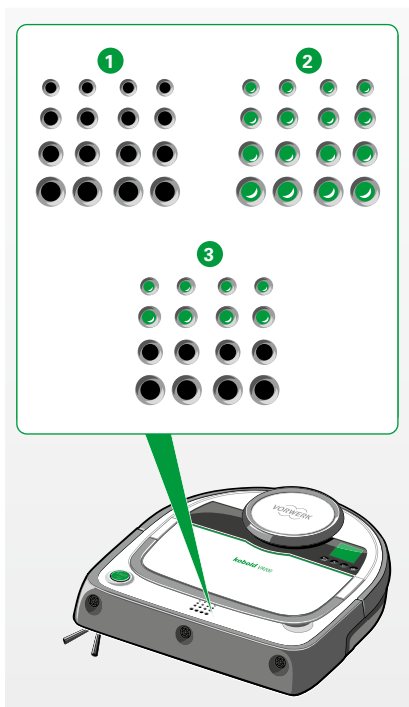


Figure 2.9 Operating displays

## 2.7 LED operating display

Colour of LED operating indicator	Item	Robot Vacuum Cleaner status
Off	1	Off, standby
Green (4 rows)	2	Switched on, operational
Green (2 rows)	3	Charging required, not able to start cleaning
Green (pulsing)	1 3 2	Charging
Orange		Dust container full, please empty
Red		Note display text



The LED operating indicator does not provide specific information on the status of the battery capacity. It only indicates whether the Kobold VR200 Robot Vacuum Cleaner is charging or operational.

## 2.8 Remote control

You can also control and operate your Kobold VR200 Robot Vacuum Cleaner with the supplied remote control (see Chapter “3.8 Remote control” on page 38). The remote control communicates with the Robot Vacuum Cleaner via infrared signals.

- For optimum signal transmission, always hold the remote control in the direction of the Robot Vacuum Cleaner so that the transmitter and receiver have visual contact with one another. The receiver is next to the display.



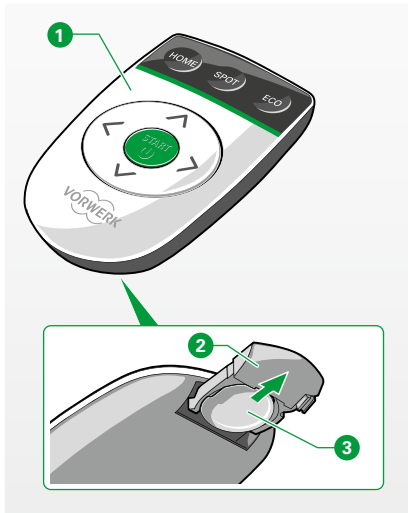


Figure 2.10 Kobold VR200 remote control

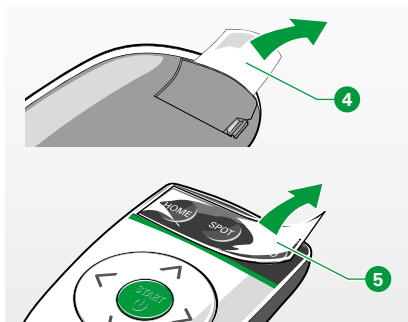


Figure 2.11 Removing the protective film

Item	Kobold VR200 remote control
1	Remote control
2	Battery compartment (opened)
3	Battery type: CR2025 (observe correct polarity for replacement)

### PUTTING THE REMOTE CONTROL INTO OPERATION

A CR2025 button cell is installed in the remote control 1 at delivery, 3 protected against discharging by a protective film.

- Remove the protective film prior to first use by pulling the protective film out of the 4 remote control by the tab.

There is another protective film on the HOME, SPOT and ECO buttons.

- Remove this protective film prior to 5 first use as well.



Information on using the remote control is found in Section “3.8 Remote control” on page 38.

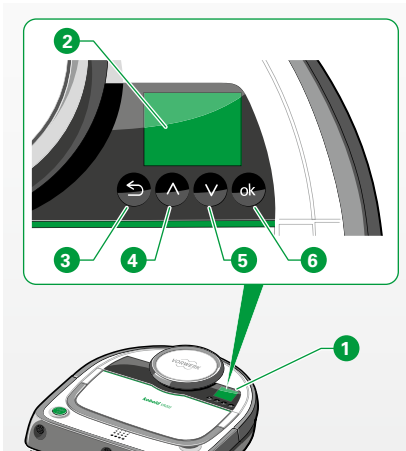


Figure 3.1 Operator panel



Figure 3.2 Switching on the Robot Vacuum Cleaner

## 3 OPERATION

### 3.1 Operator panel overview

The **operator panel** ① of your Kobold VR200 Robot Vacuum Cleaner consists of the display window and four **function keys**. The **display window** ② shows you the current status. Use the **arrow keys** ④ and ⑤ to navigate the main menu and change values. Use the **back button** ③ to go back one level. Use the **selection button (OK)** ⑥ to call up the main menu and confirm your selection.



The four function keys only respond to touch or very light pressure. Pressing firmly causes the function keys not to respond or function.

### 3.2 Putting into operation

#### 3.2.1 Switching on

- Press the **START button** ⑦.

*The display of the Kobold VR200 Robot Vacuum Cleaner is activated and a brief acoustic signal sounds.*



If the Robot Vacuum Cleaner has previously been shut down entirely, the start-up time is slightly longer (boot time).

- Pressing the **START button** ⑦ again starts the Robot Vacuum Cleaner in normal cleaning mode.

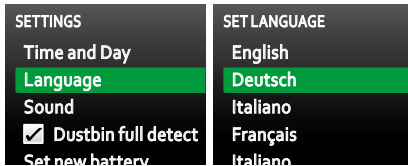
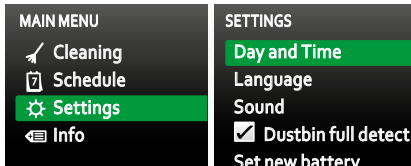


Figure 3.3 Changing the language

### 3.2.2 Selecting/changing the language

- Press the **OK button**.
- In the main menu, use the arrow keys to go to the **Settings** menu.
- Confirm with the **OK button**.
- Use the arrow keys to find the menu item **Language**.
- Confirm with the **OK button**.
- Go to the desired language.
- Confirm your language selection with the **OK button**.  
*Now the display shows the desired language you selected.*
- Select the **BACK button** to go back to the **main menu**.



### 3.2.3 Setting the clock

- Press the **OK button**.
- In the **Main menu** use the arrow keys to go to the **Settings** menu.
- Confirm with the **OK button**.
- Use the arrow keys to find the menu item **Day and Time**.
- Select the current weekday with the arrow keys.
- Confirm with the **OK button**.
- Select the current hour.
- Confirm with the **OK button**.
- Select the current minute.
- Confirm with the **OK button**.  
*The current weekday and the time are displayed.*

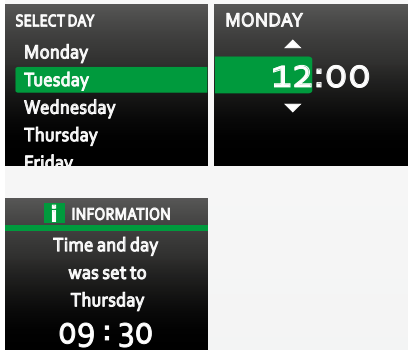


Figure 3.4 Setting the clock

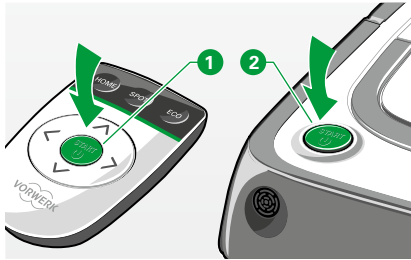


Figure 3.5 Starting the Robot Vacuum Cleaner

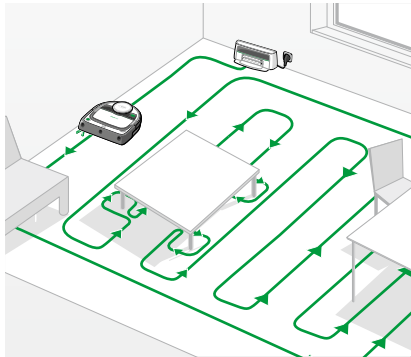


Figure 3.6 Normal cleaning mode

### 3.3 Select a cleaning mode

The Kobold VR200 Robot Vacuum Cleaner has two cleaning options: “Normal Cleaning Mode” or “Spot Cleaning Mode”.

#### 3.3.1 Normal cleaning mode (“ALL ROOMS”)

##### FUNCTION

The normal cleaning mode is often referred to as “ALL ROOMS” and is a preconfigured setting. It is activated by pressing the **START button**. As the standard cleaning mode, it is suitable for most cleaning situations.

- Start the cleaning process by pressing the **START button** on the remote control **1** or the **START button** on the Robot Vacuum Cleaner **2**.

In normal cleaning mode, the Kobold VR200 Robot Vacuum Cleaner divides rooms into cleaning areas of approx. 4 m. It first cleans the outer borders of each respective area and then cleans the inside area in straight, parallel lines to ensure that the area is cleaned as effectively as possible. It proceeds this way, one section at a time. As soon as a room is fully cleaned, it moves to the next one. When the Robot Vacuum Cleaner is finished cleaning, “**Finished! I’m returning to my base station**” is shown on the display and the Robot Vacuum Cleaner returns to the base station.



It generally passes around obstacles in the room clockwise.



Figure 3.7 Selecting “Normal Cleaning”

**i** Depending on the layout (furniture, doors, etc.), the robot divides the room into various sub-areas. The robot may initially leave out a sub-area and return to it later. However, the entire floor area will be cleaned. This behaviour can be optimised by relocating the base station.

### SWITCHING TO “ALL ROOMS” MODE

How to switch to back to normal cleaning mode from another setting via the operator panel:

- Press the **OK button**.
- In the **Main menu**, use the arrow keys to go to the **Cleaning** menu.
- Confirm with the **OK button**.
- Use the arrow keys to go to **All rooms**.
- Confirm with the **OK button**.

*The display window displays the ALL ROOMS symbol and the Robot Vacuum Cleaner starts cleaning in normal cleaning mode.*

**i** In small, enclosed rooms, the Robot Vacuum Cleaner cleans for a minimum of 8 minutes. Depending on the size of the room, the area may be cleaned more than once.

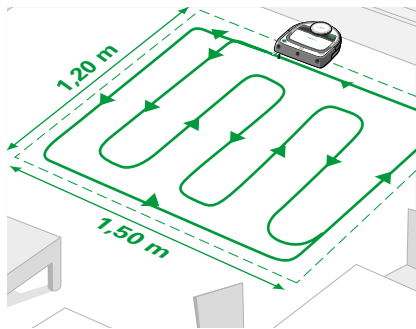


Figure 3.8 “Spot Cleaning” mode

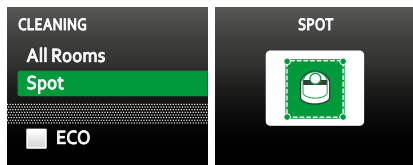


Figure 3.9 Selecting “Spot Cleaning”



Figure 3.10 Selecting “Spot Cleaning” using the remote control

### 3.3.2 “Spot” cleaning mode

#### FUNCTION

“SPOT” cleaning mode is suitable for cleaning a smaller area of approx.  $1.5 \times 1.2$  m. Set the Kobold VR200 Robot Vacuum Cleaner down with the bumper facing forward in front of the area you want to clean (as displayed in Figure 3.8). The Robot Vacuum Cleaner will then move in straight, parallel lines to clean the  $1.5 \times 1.2$  m spot directly in front of it. When the Robot Vacuum Cleaner is done cleaning the area, it returns to the starting point.

#### SWITCH TO SPOT CLEANING MODE

How to switch to “SPOT” cleaning mode from another setting via the control panel:

- Press the **OK button**.
- In the **Main menu**, use the arrow keys to go to the **Cleaning** menu.
- Confirm with the **OK button**.
- In the **Cleaning** menu, use the arrow keys to go to “Spot”.
- Press the selection button (OK).

*The display window shows the “SPOT” symbol and the Robot Vacuum Cleaner begins cleaning in “Spot” cleaning mode.*

How to switch to spot cleaning mode using the remote control:

- Select “SPOT” ①.

*The Robot Vacuum Cleaner begins cleaning in “Spot” cleaning mode.*

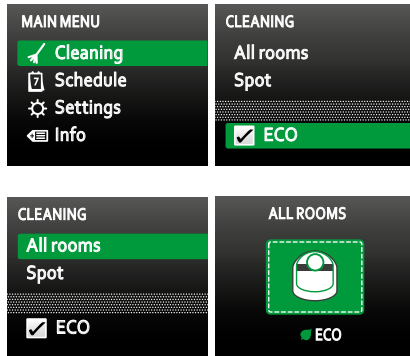


Figure 3.11 Selecting the “ECO Option”



Figure 3.12 Selecting the “ECO Option” using the remote control

### 3.3.3 ECO option

#### FUNCTION

In the ECO option, the Robot Vacuum Cleaner works with reduced motor performance. It is quieter and uses less energy. With the ECO option, the battery capacity of the Robot Vacuum Cleaner is sufficient for about 90 minutes.

#### SWITCHING TO THE ECO OPTION

How to switch to the ECO-Option via the control panel:

- Press the **OK button**.
- In the **Main menu**, use the arrow keys to go to the **Cleaning** menu.
- Confirm with the **OK button**.
- In the **Cleaning** use the arrow keys to go to **ECO**.  
*The ECO selection option is now marked in green.*
- Confirm with the **OK button**.  
*Now there is a checkmark next to ECO.*
- In the **Cleaning** menu, use the arrow keys to, for example, go to **ALL ROOMS**.
- Press the selection button (OK) to select **ALL ROOMS** ..  
*The display window shows the “ALL ROOMS” symbol and “ECO”.*  
*The Robot Vacuum Cleaner is quieter and uses less energy than when cleaning in normal cleaning mode ALL ROOMS.*

#### How to switch to the ECO option using the remote control:

- Use the ECO button **1** to switch to the energy-saving, quieter mode at any time, even during operation.  
*The word “ECO” appears in the status bar of the display when this option is activated.*

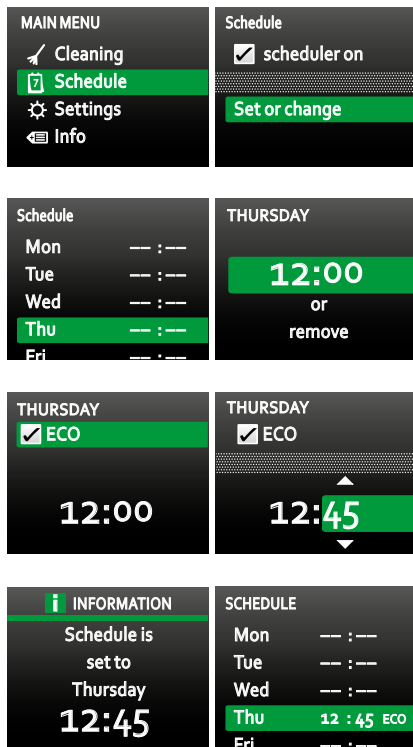


Figure 3.13 “Schedule” function

### 3.3.4 Configuring the scheduling function

With the scheduling function, you can programme the Kobold VR200 Robot Vacuum Cleaner so that it cleans on a regular schedule, every day or on certain days of the week.



Note that you have to set the clock prior to using the scheduling function (see Chapter “3.2.3 Setting the clock” on page 27).

#### FUNCTION

- Press the **OK** button.
- In the **Main** menu use the arrow keys to go to the **Schedule** menu.
- Confirm with the **OK** button.
- Activate the schedule by pressing the **OK** button.  
*A checkmark now appears.*
- Select **Set or change**.
- Confirm with the **OK** button.
- Use the arrow keys to select the weekday on which you want the Robot Vacuum Cleaner to clean.
- Confirm with the **OK** button.
- Select the desired start time. **Hour/Minutes**. The minutes can be selected in quarter-hourly intervals: 00/15/30/45.
- Confirm with the **OK** button.

#### ACTIVATING THE ECO OPTION

- Click on the **ECO** menu item.
- Use the **OK** button to set or remove the checkmark.  
*The display informs you about schedule programming.*  
*The Robot Vacuum Cleaner will clean at the scheduled time. The clock symbol in the status bar of the display shows that the schedule is active.*



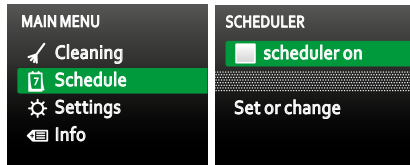


Figure 3.14 Deactivating the schedule

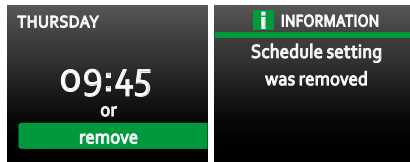


Figure 3.15 Deleting the cleaning times

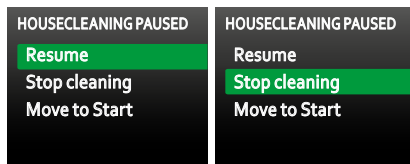


Figure 3.16 Interrupting the cleaning process

### 3.3.5 Erasing configured schedule programming

There are two ways to erase the programmed cleaning process of the Kobold VR200 Robot Vacuum Cleaner.

- Deactivate the schedule (your settings are retained).
- Erase the programmed cleaning times.

#### How to deactivate “scheduler on”:

- Go to the menu item **scheduler on**.
- Press the selection button (OK) again to deactivate **scheduler on**.  
*The checkmark next to “Schedule Active” is erased.*

#### How to erase the programmed cleaning times:

- Go to the **Schedule** menu.
- Go to the menu item **Set or Change** in the **Schedule** menu.
- Use the arrow keys to select the weekdays on which you do not want cleaning and confirm with the selection button (OK).
- Use the arrow keys to move down and select **Delete**.  
*The display informs you that your schedule settings were erased.*

## 3.4 Pause

If you want to stop the cleaning process for some time, proceed as follows:

- Press the start/stop button on the Robot Vacuum Cleaner or on the remote control.

*The display of the Robot Vacuum Cleaner shows the Pause menu.*

Use the selection button (OK) to select the next action you want to carry out.

If the Kobold VR200 Robot Vacuum Cleaner did not start at the base station, or if it has only cleaned for a short time, the selection item “Move to Start” cannot be selected on the display.



Figure 3.17 Press the start/stop button on the Robot Vacuum Cleaner for standby mode.

### 3.5 Standby mode

- Press the **start/stop button** (push and hold > 4 seconds).  
*The Robot Vacuum Cleaner switches off and enters standby mode.*
- When you press the **start/stop button** again, it switches back on and the display lights up.  
*The Robot Vacuum Cleaner is operational again.*

Without contact to the base station, the robot retains all settings in standby mode for a few weeks until it is fully discharged.

### 3.6 Switching off the Robot Vacuum Cleaner

If you do not want to use the Kobold VR200 Robot Vacuum Cleaner for an extended period of time (e.g. while on holiday), you can switch it off entirely. To switch off the Robot Vacuum Cleaner, proceed as follows:

- In the **Settings** menu, go to **Shutdown robot** and confirm your selection.  
*The display and operating indicator turn off, and the Robot Vacuum Cleaner is powered down.*

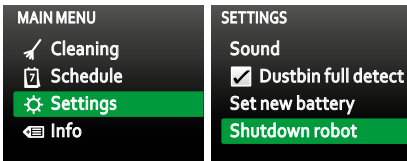


Figure 3.18 Switching off the Robot Vacuum Cleaner



Note that you cannot switch off the Kobold VR200 Robot Vacuum Cleaner while it is being charged.

- i** When the batteries of the Robot Vacuum Cleaner are completely drained, it switches off automatically. In this situation, the Robot Vacuum Cleaner settings such as the time and cleaning schedule will be lost.
- i** When the Robot Vacuum Cleaner has been switched off due to completely drained batteries, it always has to be docked to the base station before it is operational again.  
The battery charge level is checked during this time. This process can take up to 3 minutes before the Robot Vacuum Cleaner is operational again.
- i** When switched off by using the shutdown option in the settings menu, the Robot Vacuum Cleaner still retains all settings for a couple of weeks, until it has lost all of its charge.

### 3.7 Cleaning area and navigation of the Robot Vacuum Cleaner

The Robot Vacuum Cleaner climbs over low objects within the area to be cleaned. It recognises and moves around obstacles, virtually without touching them.

#### 3.7.1 Climbing over objects with the climb assist

Notwithstanding its low structural height, the Robot Vacuum Cleaner can easily climb over low objects with a height up to 15 mm with its climb assist, **1** e.g. thresholds or carpets.

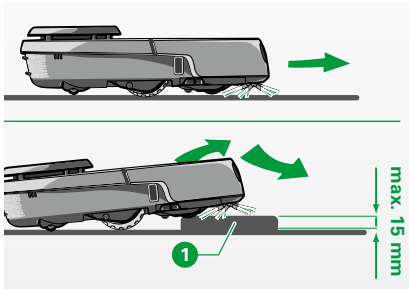


Figure 3.19 Overcoming objects

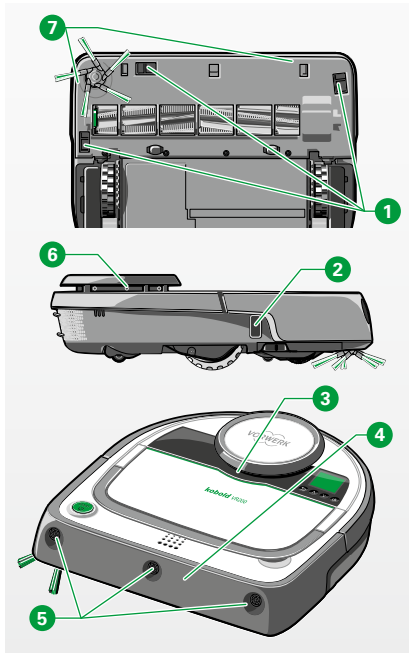


Figure 3.20 Sensors on the Robot Vacuum Cleaner

### 3.7.2 Sensors

In order to recognise and move around obstacles in the area to be cleaned, the Kobold VR200 Robot Vacuum Cleaner is equipped with the following:

- 3 floor sensors **1**,
- 1 wall following sensor **2**,
- 2 contact sensors on the LDS bumper **3**,
- 4 contact sensors on the bumper **4**,
- 3 ultrasound sensors **5**,
- 1 laser scanner **6**.
- 2 magnetic strip sensors **7**.

The Robot Vacuum Cleaner moves around approx. 99% of the obstacles in the area to be cleaned without touching them. The **laser scanner 6** rotates 5 times per second by 360°, covering the area around the Robot Vacuum Cleaner with a radius of approx.

4 metres. Transparent or highly reflective objects (glass, acrylic elements, mirrors etc.) that are not recognised by the rotating laser scanner are captured by the **ultrasonic sensors 5**. As soon as the ultrasonic sensors detect obstacles at a distance of 15 cm, the Robot Vacuum Cleaner reduces its driving speed. The Robot Vacuum Cleaner stops approx. 1 – 3 cm before the obstacle. As long as the robot is driving along an obstacle (e. g. a wall), the ultrasound beam is deactivated to permit correct edge cleaning. In rare cases, obstacles are not recognised by the ultrasonic sensors. Such obstacles are detected by touch on the front bumpers **4** or by the LDS bumper **3**.

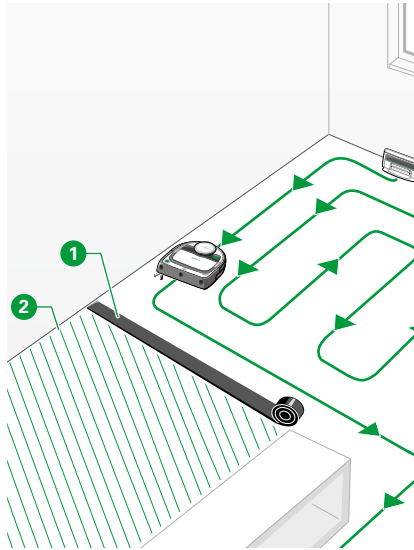


Figure 3.21 Magnetic strips

### 3.7.3 Magnetic strips

With the magnetic strips, ❶ you can outline the area to be cleaned without having to close a door.

The Robot Vacuum Cleaner detects the magnetic strip and does not cross it. A magnetic strip with a length of 4 m is included with the device.

- Lay the magnetic strip flat on the floor, e.g. from one wall to the opposite wall, in order to exclude an area from cleaning by the Robot Vacuum Cleaner. You can cut the strip with scissors to fit the exclusion area.
- Press the **start button**.

*The Robot Vacuum Cleaner begins cleaning the entire area inside the limit. Once the Robot Vacuum Cleaner is done cleaning, it automatically returns to the base station or the starting point.*



The magnetic strip has to be laid down for each cleaning cycle, since the Robot Vacuum Cleaner does not remember the limits.



#### TIPS FOR USING THE MAGNETIC STRIP

- On slippery surfaces, secure the magnetic strip using double-sided tape in order to prevent it from shifting.
- Lay the magnetic strip under a carpet if you do not want that carpet to be cleaned.

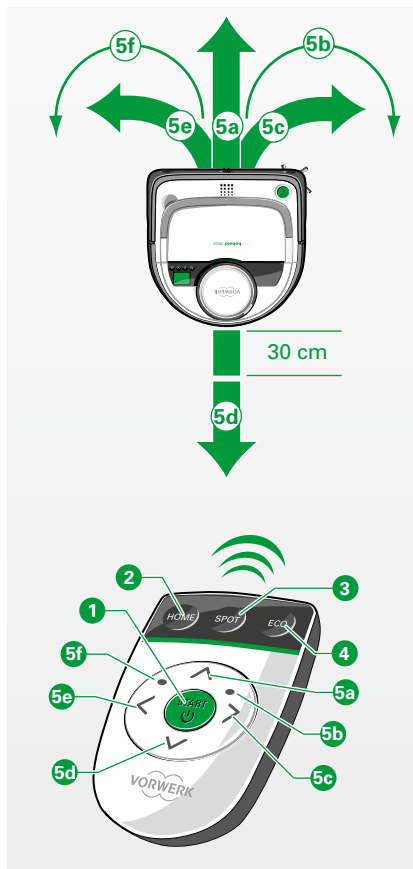


Figure 3.22 Remote control functions

### 3.8 Remote control

**Note! Risk of damage from improper use!**

- Only operate the Kobold VR200 Robot Vacuum Cleaner with the remote control as long as it is in sight.

The remote control is a convenient way for you to operate the Robot Vacuum Cleaner in normal cleaning mode (1 button). You can target dirty or hard to reach areas in this manner. For example, spot cleaning can be advisable in such cases (3 button). The remote control uses infrared technology for manual directional control (buttons 5a to 5f) from up to 5 metres away.

Item	Kobold VR200 remote control
1	START button
2	HOME button
3	SPOT button
4	ECO button (ECO option)
5a to 5f	Direction buttons for remote control

**i** In the various cleaning modes, not all of the remote control buttons are always available for controlling the Robot Vacuum Cleaner.

**i** The display cannot be controlled using the remote control.

**i** If the **HOME** button is pressed, the Robot Vacuum Cleaner first has to get its bearings before it moves to the base station. This can take a few seconds. Signal transmission is best when the remote control is held in the direction of the display. The HOME button is inactive during manual control.

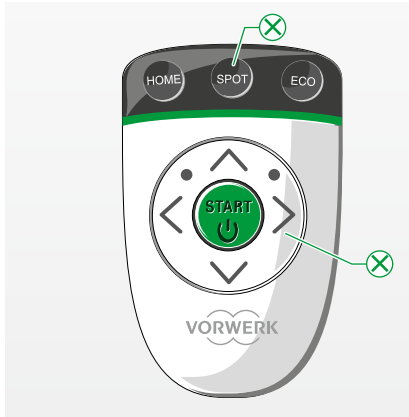


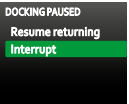

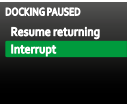



Figure 3.23 The buttons marked with **X** are not available in the “ALL ROOMS” normal cleaning mode

### 3.8.1 Starting the Robot Vacuum Cleaner in normal cleaning mode (ALL ROOMS)

- Press the **START**-button to wake up the Kobold VR200 Robot Vacuum Cleaner.  
*If the Robot Vacuum Cleaner was completely switched off, this can take up to 20 seconds. The start screen then appears.*

Display	Button	Available remote control functions
		The Robot Vacuum Cleaner starts cleaning.
		The Robot Vacuum Cleaner starts in ECO mode. Pressing again deactivates ECO mode.
		The Robot Vacuum Cleaner interrupts the cleaning.
		The Robot Vacuum Cleaner stops cleaning and returns to the start or the base station.
		Brief press of the button: The Robot Vacuum Cleaner continues cleaning. Holding down the button: The Robot Vacuum Cleaner stops cleaning.
		The Robot Vacuum Cleaner returns to the start or the base station.

	<p>The Robot Vacuum Cleaner has identified the base station and moves towards it.</p>
	<p>The Robot Vacuum Cleaner interrupts its journey to the base station.</p>
	<p>The Robot Vacuum Cleaner has not identified the base station and moves to the starting point of the cleaning journey.</p>
	<p>The Robot Vacuum Cleaner interrupts its journey to the base station.</p>
	<p>Brief press of the button: The Robot Vacuum Cleaner continues cleaning. Holding down the button: The Robot Vacuum Cleaner stops docking.</p>
	<p>The Robot Vacuum Cleaner continues docking.</p>

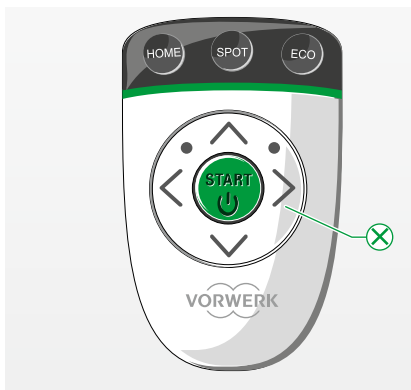

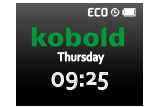



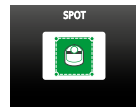
Figure 3.24 The buttons marked with  are not available in SPOT cleaning mode

### 3.8.2 Starting the Robot Vacuum Cleaner in SPOT cleaning mode

- Press the **START** button to wake up the Kobold VR200 Robot Vacuum Cleaner. *If the Robot Vacuum Cleaner was completely switched off, this can take up to 20 seconds. The start screen then appears.*

Display	Button	Available remote control functions
		<p>The Robot Vacuum Cleaner starts cleaning.</p>

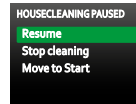




The Robot Vacuum Cleaner interrupts the cleaning.



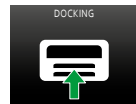
The Robot Vacuum Cleaner stops cleaning and returns to the start or the base station.



Brief press of the button:  
The Robot Vacuum Cleaner continues cleaning.  
Holding down the button:  
The Robot Vacuum Cleaner stops cleaning.

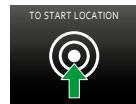


The Robot Vacuum Cleaner returns to the start or the base station.



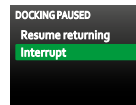
The Robot Vacuum Cleaner has identified the base station and moves towards it.

The Robot Vacuum Cleaner interrupts its journey to the base station.



The Robot Vacuum Cleaner has not identified the base station and moves to the starting point of the cleaning journey.

The Robot Vacuum Cleaner interrupts its journey to the base station.




Brief press of the button:  
The Robot Vacuum Cleaner continues cleaning.  
Holding down the button:  
The Robot Vacuum Cleaner stops docking.








The Robot Vacuum Cleaner continues docking.






Figure 3.25 The buttons marked with  are not available in manual cleaning mode

### 3.8.3 Manual control

- Press the **START-button** one time to wake up the Kobold VR200 Robot Vacuum Cleaner.  
*If the Robot Vacuum Cleaner was switched off, this can take up to 20 seconds. The start screen then appears.*

Display	Button	Available remote control functions
		Press any of the direction buttons and the Robot Vacuum Cleaner starts cleaning.
		Navigate the Robot Vacuum Cleaner to the area that needs cleaning by using the direction buttons.
		Holding down the button: The Robot Vacuum Cleaner stops cleaning.

-  If you are operating the Robot Vacuum Cleaner via the remote control, the floor sensors of the Robot Vacuum Cleaner remain active. However, the magnetic sensor is inactive so do not navigate the Robot Vacuum Cleaner towards any drop-offs.
-  If you are moving the Robot Vacuum Cleaner using the reverse button, it will stop ever 30 cm for safety reasons (there are no floor sensors at the back). You must issue the command again if you want the Robot Vacuum Cleaner to reverse further.
-  If the Robot Vacuum Cleaner identifies a drop-off, it is only able to move backwards. The command must be issued again in this instance as well, because it stops independently every 30 cm for safety reasons.

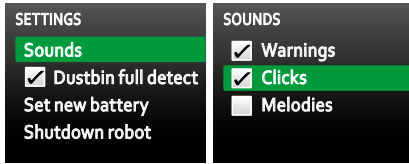


Figure 3.26 “Sound” display

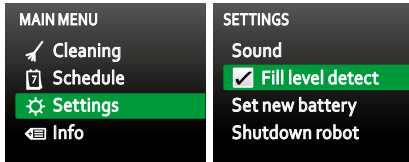


Figure 3.27 “Fill level detect” display

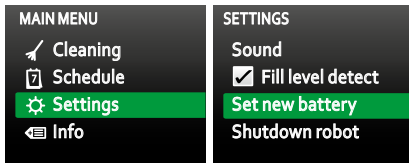


Figure 3.28 “New battery”

## 3.9 Other settings

### 3.9.1 Sounds

With this menu option, you can turn the acoustic signals for warnings, clicks or melodies on and off individually. There are, however, a few sounds that will always be on such as the turn on and turn off functions.

### 3.9.2 Fill level recognition

Your Kobold VR200 Robot Vacuum Cleaner automatically reminds you to empty the dust container after approx. 90 minutes of runtime. You can deactivate the automatic reminder by clearing the checkmark.

### 3.9.3 New battery

The battery settings are normally reset by your customer service technician after replacing the battery. However, the “**Set new battery**” menu can also be helpful to you in case of battery error messages.

To reset the battery settings of your Robot Vacuum Cleaner:

- In the **Settings** menu, use the arrow keys to go to **Set new battery**.
- Confirm by pressing the OK selection button.

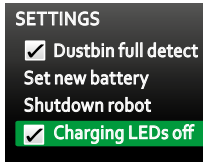


Figure 3.29 “Charging LEDs off” display

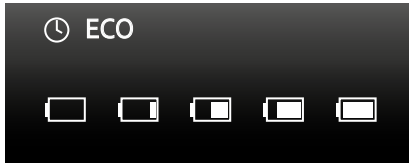


Figure 3.50 Status indicators on the display

### 3.9.4 Switching off the LED

- If you activate the checkmark next to the Charging LEDs off option in the settings menu, the LED lights will not illuminate while in standby mode. This is an attractive option for those who do not want the LED lights illuminated at night.

### 3.10 Status indicators on the display

- **Clock:** Schedule active
- **ECO:** ECO option active
- **Battery charge level:** 0% / 25% / 50% / 81% / 100%

## 4 MAINTENANCE

Regular maintenance of your Kobold VR200 Robot Vacuum Cleaner will ensure optimum functionality and enjoyment. Helpful information on cleaning and caring for your Robot Vacuum Cleaner is provided in the sections that follow.



### Warning! Risk of electric shock!

- Always switch off the device and disconnect the mains plug of the base station from a power source before all changeover, cleaning and maintenance tasks.

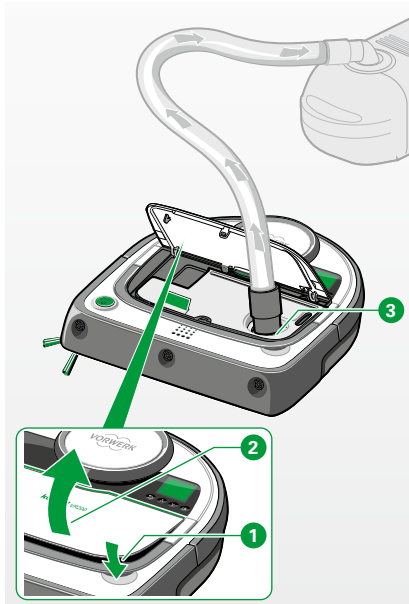


Figure 4.1 Cleaning out the dust container

### 4.1 Emptying the dust container and cleaning the filter

#### 4.1.1 Emptying the dust container

For best results, empty and clean the dust container after every use.

- Press the release button for the **1** dust compartment cover **2** and open the dust compartment on the Robot Vacuum Cleaner.
- Set the end of your conventional vacuum cleaner hose onto the suction opening **3** and switch it on. The contents of the dust compartment and filter are vacuumed out. You will obtain the best cleaning results by operating the conventional vacuum cleaner at the maximum setting.

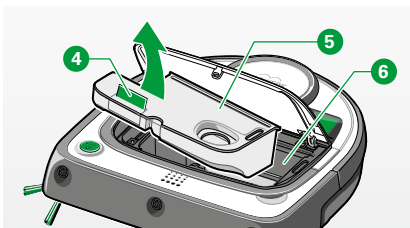


Figure 4.2 Removing the dust container

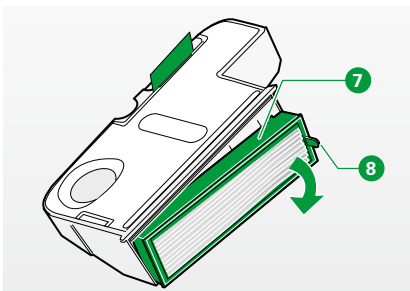


Figure 4.3 Removing the filter

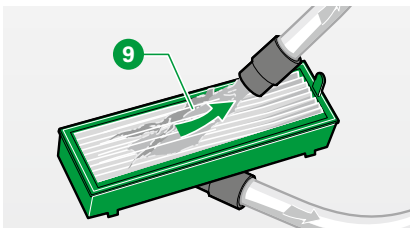


Figure 4.4 Cleaning the filter

The dust container can also be cleaned manually:

- Remove the dust container **5** from the dust compartment **6** of the Robot Vacuum Cleaner. In order to do so, pull the dust container out by the green **4** tab.
- Open the dust container by taking out the filter on its narrow side. In order to do so, pull the filter out of the dust container by the green lug **8** of the filter frame **7**.
- Empty out the contents of the dust container with the help of a brush, or clean it out with a conventional vacuum cleaner.

#### 4.1.2 Cleaning the filter

The pleated filter material is covered by a pre-filter to protect it against severe contamination and damage. However, fine dust and fibres may accumulate after some time between the pre-filter and the pleated filter material. Therefore, we recommend cleaning the filter regularly with a conventional vacuum cleaner.

- Remove the filter by pulling it out of the dust compartment by the green lug of the filter frame.
- Vacuum both sides of the filter **9** and/or clean it with a soft, dry cloth.



The fibres remaining under the pre-filter do not impair the performance of the filter as a whole. For optimum cleaning performance, we recommend replacing the filter with a new one once a year.

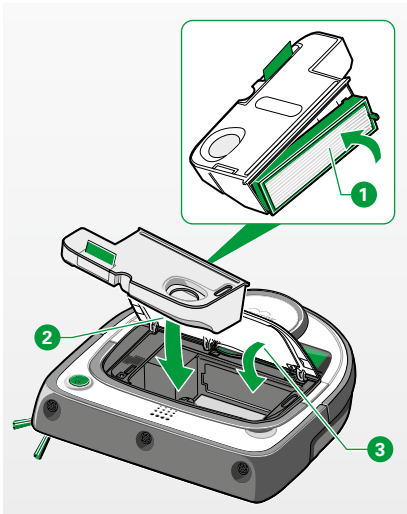


Figure 4.5 Reinstalling the dust container and filter in the dust compartment

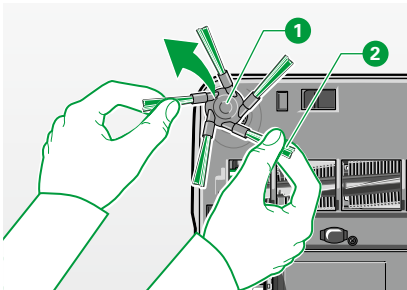


Figure 4.6 Pulling off the side brush

### 4.1.3 Reinstalling the dust container and filter

- Insert the filter back into the dust container **1**.
- Insert the dust container with filter **2** back into the Kobold VR200 Robot Vacuum Cleaner.
- Press down the dust compartment cover **3** and ensure that it is properly closed.

#### Notice! Risk of damage due to improper use!

- Never operate the device without the filter.

## 4.2 Cleaning the side brush



#### Warning! Risk of electric shock!

- Always switch off the device and disconnect the mains plug of the base station from a power source before all changeover, cleaning and maintenance tasks.

The side brush is easy to pull off the mounting point.

- Pull the side brush up and off the drive axle **1** by the bristles, **2** using both hands.
- Clean dust and dirt off the side brush.
- To remove lint, hair and other dirt from the drive axle, you will need to remove the brush cover (see Section “4.3 Cleaning the round brush” on page 48).
- To reattach the side brush, align the centre of the side brush with the mounting point and push the side brush onto the drive axle.

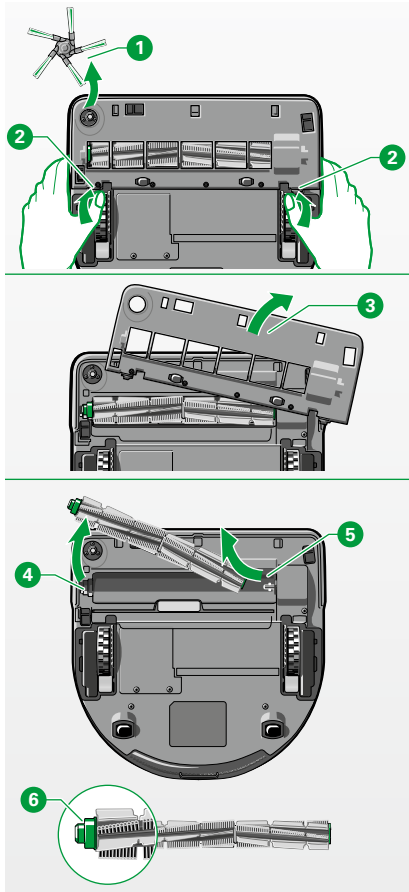


Figure 4.7 Removing the round brush

### 4.3 Cleaning the round brush



#### Warning! Risk of electric shock!

- Always switch off the device and disconnect the mains plug of the base station from the power source before all changeover, cleaning and maintenance tasks.

#### Note! Risk of damage from improper use!

- Never clean the round brush using liquids. The round brush is not dishwasher safe nor waterproof.

Clean the round brush if threads or hair are wrapped around it.

#### REMOVING THE ROUND BRUSH

- Lay the Robot Vacuum Cleaner upside down on the floor or a table.
- Remove the side brush **1** (see section “4.2 Cleaning the side brush” on page 47).
- Using both hands at the same time, press the latches **2** on both sides of the brush cover forward to unlock.
- Remove the brush cover from the Robot Vacuum Cleaner. **3**.
- First lift the left side of the round brush out of the Robot Vacuum Cleaner **4** and then pull the right side off the axle **5** to remove the round brush.

#### CLEANING THE ROUND BRUSH

- Remove lint, hair and other dirt from the round brush.
- Make sure that the green bearing **6** and the metallic cup and ball bearing underneath on the left end of the round brush do not come off.



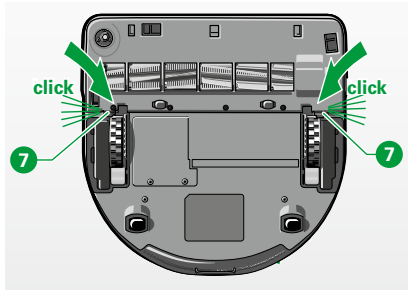


Figure 4.8 Audible latching of the brush cover

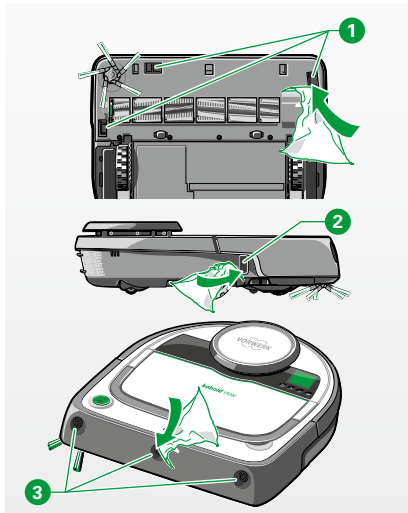


Figure 4.9 Clean sensors

### REINSTALL THE ROUND BRUSH AND BRUSH COVER:

- To reinstall the round brush and the brush cover, follow the steps to remove the round brush in the reverse order.
- Ensure that the latch engages audibly when you insert the brush cover **7**.

## 4.4 Cleaning the sensors



### Warning! Risk of electric shock!

- Always switch off the device and disconnect the mains plug of the base station from the power source before all changeover, cleaning and maintenance tasks.

### Notice! Risk of malfunction!

- Clean the sensors regularly. Recommendation: each time the dust container is cleaned.
- Clean the floor sensors **1** on the underside of the Kobold VR200 Robot Vacuum Cleaner with a cotton swab or a soft, clean cloth, but never with pointed or sharp objects. If the area of the sensors is very dirty, it can also be cleaned with a conventional vacuum cleaner.
- Clean the wall following sensor **2** on the right side with a cotton swab or a soft, clean cloth.
- Clean the ultrasound sensors **3** on the front of the Kobold VR200 Robot Vacuum Cleaner with a cotton swab or a soft, clean cloth, but never with pointed or sharp objects.

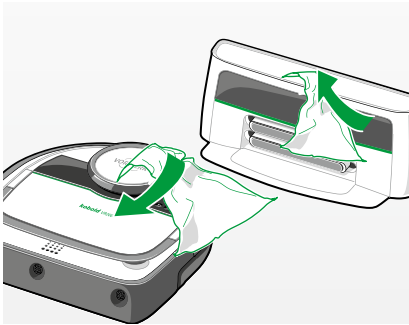


Figure 4.10 Cleaning the Robot Vacuum Cleaner and the base station

## 4.5 Cleaning the Robot Vacuum Cleaner and the base station

---

### Notice! Risk of damage due to improper use!

- Do not immerse the Robot Vacuum Cleaner and the base station in water.
- Be sure to avoid scratching the infrared window of the base station.
- Do not use abrasive cleaning pads, chemical agents or aggressive liquids such as benzene or acetone to clean the Robot Vacuum Cleaner.



### Warning! Risk of electric shock!

- Always switch off the device and disconnect the mains plug of the base station from the power source before all changeover, cleaning and maintenance tasks.

- 
- Clean the Robot Vacuum Cleaner and the base station with a soft, clean cloth.

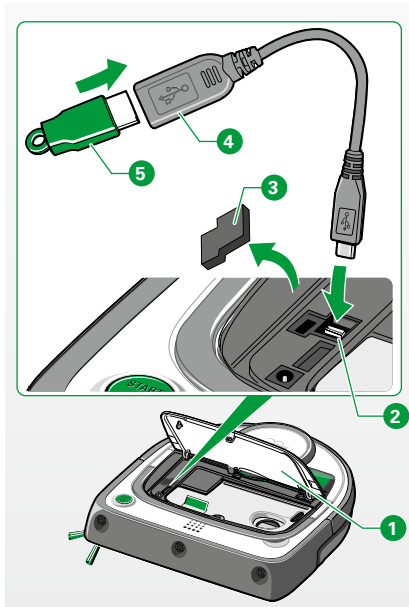


Figure 5.1 Connecting the USB stick to the Robot Vacuum Cleaner

## 5 SOFTWARE UPDATES

The software of the Kobold VR200 Robot Vacuum Cleaner is subject to continuous further development and optimisation. In order for you to benefit from these improvements, the latest software versions are available on our homepage. [www.vorwerk-kobold.com](http://www.vorwerk-kobold.com)

Subscribe to our newsletter to be informed with regular news and updates. Naturally you can also have new software versions installed by our Service Centre. For locations and opening hours, please visit us on the internet or call our customer hotline (see Section “9 Service” on page 62).

### SOFTWARE-UPDATE VR200 USING A USB STICK

Your Robot Vacuum Cleaner has a micro-USB port. This micro-USB port is **2** located under the dust compartment cover of the Robot Vacuum Cleaner **1** directly next to the dust container.

- Take a USB stick (not supplied).
- Create a folder named “RobotData”.
- Download the software file from our homepage (see above) and save it in the folder.
- Only use the supplied USB adapter (on-the-go version).
- Remove the rubber plug. **3**
- Connect your USB stick **5** to the Robot Vacuum Cleaner using the micro-USB port **2** and the supplied USB adapter **4**.

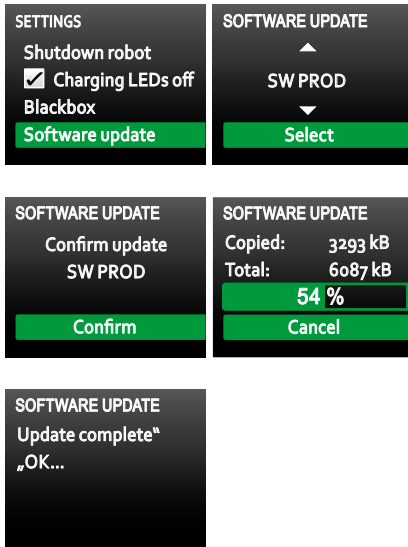


Figure 5.2 Software update

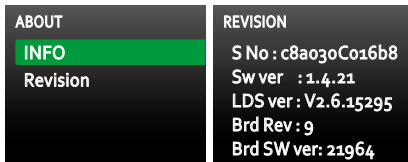


Figure 5.3 Reading the software version

**i** An empty stick should be used for the update with a USB stick, since existing content on the stick may be erased! USB sticks that encrypt or decrypt during copy and read processes are usually too slow and can lead to problems, as can USB sticks distributed as promotional items.

- Only use USB sticks formatted with FAT32. NTFS and other file systems are not supported.

**i** If the Kobold VR200 Robot Vacuum Cleaner is not fully charged, we recommend docking it on the charging station during the software update so the supply of power is assured.

#### Performing the software update:

- Select the **Settings** menu and confirm your selection.
- Select and confirm the menu item **Software update**.
- Select the software update shown on the display.
- Confirm the selected software update.
- Do not interrupt the installation process.

*The installation of the update starts. As soon as the update is complete, the robot switches off briefly and then back on.*

- Remove the USB stick after the software update.
- Reinstall the rubber plug and close the cover.

#### Reading the current software version:

- Go to the menu item **Info** and press the selection button (OK).
- Select the menu item **Revision** and confirm your selection.

*You can read the installed software version in the second line (Sw ver).*

*Use the **back button** to return to the main menu.*

## 6 TROUBLESHOOTING



### Warning! Risk of an electric shock and injury!

- Never attempt to repair the device yourself.

We recommend having repairs to electric appliances carried out exclusively by your authorised Vorwerk Customer Service Centre.

If your device does not function properly, it could be due to the following causes:

ERROR MESSAGE ON DISPLAY	POSSIBLE CAUSE AND ELIMINATION
<p><b>Check dust container and filter.</b> Please empty if necessary. Please clean floor sensors.</p>	<p>The dust container is full.</p> <ul style="list-style-type: none"> <li>• Empty the dust container, clean the filter and reinstall the dust container including filter in the Robot Vacuum Cleaner.</li> <li>• Clean the floor sensors with a soft, clean cloth, a cotton swab or a conventional vacuum cleaner.</li> <li>• You can clean the dust container and floor sensors manually or with a conventional vacuum cleaner.</li> </ul>
<p><b>Brush is blocked.</b></p>	<p>The round brush or the side brush has stopped rotating.</p> <ul style="list-style-type: none"> <li>• Remove lint, hair and other dirt from the affected brush.</li> <li>• Remove the brush and then reinstall it (see Section “4.3 Cleaning the round brush” on page 48)</li> </ul>
<p><b>Bumper jam.</b></p>	<p>The bumper is jammed.</p> <ul style="list-style-type: none"> <li>• Jiggle the bumper to release it.</li> </ul>
<p><b>Time not set.</b></p>	<p>When the batteries of the Kobold VR200 Robot Vacuum Cleaner are completely drained, it switches off automatically. The Robot Vacuum Cleaner settings can be lost and therefore may have to be reconfigured prior to the next use.</p> <ul style="list-style-type: none"> <li>• Set the time (see Section “3.2.3 Setting the clock” on page 27).</li> </ul>

**ERROR MESSAGE ON DISPLAY****POSSIBLE CAUSE AND ELIMINATION**

Please clear my path.

The Kobold VR200 Robot Vacuum Cleaner cannot continue moving because the way is blocked.

- Please remove any objects in the way, or move the Robot Vacuum Cleaner a few centimetres to the side.

The Robot Vacuum Cleaner was picked up while cleaning and set down somewhere else.

- Please do not move the Robot Vacuum Cleaner too far (less than 0.5 metres), since it may have navigation problems otherwise.

Furniture was moved, doors opened/closed or the Robot Vacuum Cleaner itself shifted items during cleaning.

- Please do not rearrange things while cleaning.

If the Robot Vacuum Cleaner has navigation problems, choose the “Shutdown robot” option in the “Settings” menu option. Then switch it back on by pressing the green START button. It may take up to 15 seconds to restart.

The dust compartment cover is not fully closed.

- Please ensure it engages properly.

<b>FAULT</b>	<b>POSSIBLE CAUSE AND ELIMINATION</b>
<p><b>The cleaning performance of the Kobold VR200 Robot Vacuum Cleaner has decreased.</b></p>	<p>The dust container is probably full.</p> <ul style="list-style-type: none"> <li>• Empty the dust container and clean the filter.</li> </ul> <p>The brushes are dirty.</p> <ul style="list-style-type: none"> <li>• Clean the round and side brushes (see Section “4.2 Cleaning the side brush” on page 47 and Section “4.3 Cleaning the round brush” on page 48).</li> </ul>
<p><b>The Robot Vacuum Cleaner does not respond.</b></p>	<p>The batteries may be drained.</p> <ul style="list-style-type: none"> <li>• Charge the Robot Vacuum Cleaner on the base station. It may take a few minutes for the Robot Vacuum Cleaner to show that it is being charged if the batteries were completely drained (see Section “2.4 Setting up the base station” on page 20).</li> <li>• Make sure that the mains cable and mains plug are properly connected to the base station and the outlet. The Robot Vacuum Cleaner will discharge if it is not docked on the base station.</li> </ul>
<p><b>The Kobold VR200 Robot Vacuum Cleaner is not charging.</b></p>	<p>The base station and/or Robot Vacuum Cleaner may not be properly connected to the power supply.</p> <ul style="list-style-type: none"> <li>• Make sure that the plug is properly connected to the jack on the base station.</li> <li>• Also make sure that the mains plug is properly connected to the outlet.</li> </ul> <p>If you do not charge the Robot Vacuum Cleaner on the base station, and do not switch it off using the menu item “Shutdown robot” (see Section “3.6 Switching off the Robot Vacuum Cleaner” on page 34), it will discharge within a few weeks.</p>

<b>FAULT</b>	<b>POSSIBLE CAUSE AND ELIMINATION</b>
<p><b>The Kobold VR200 Robot Vacuum Cleaner suddenly stops cleaning.</b></p>	<p>You have selected spot cleaning mode. In this mode, the Robot Vacuum Cleaner stops and returns to the starting place after the "SPOT" or set area has been cleaned.</p> <ul style="list-style-type: none"> <li>• If you want to clean the rest of the room, select "ALL ROOMS" from the cleaning menu (see Section "3.3 Select a cleaning mode" on page 28).</li> </ul> <p>The sensors may be covered or dirty.</p> <ul style="list-style-type: none"> <li>• Make sure that the sensors are not covered.</li> <li>• If the sensors are dirty, clean the sensors with a soft, clean cloth or cotton swab (see Section "4.4 Cleaning the sensors" on page 49).</li> </ul> <p>In large, empty rooms, navigation may be a problem if there are not furnishings or walls within a radius of 2 – 3 metres.</p> <p>On high pile carpets, the wheels of the Robot Vacuum Cleaner may spin and lead to navigation errors.</p> <ul style="list-style-type: none"> <li>• Block off the carpet with the magnetic strip.</li> </ul> <p>If the sensors are dirty, the Robot Vacuum Cleaner may interpret dark and dense carpets as a drop-off. Glass floors are generally interpreted as a drop-off.</p> <ul style="list-style-type: none"> <li>• Clean the floor sensors regularly.</li> </ul>



**FAULT**

**POSSIBLE CAUSE AND ELIMINATION**

**The Kobold VR200 Robot Vacuum Cleaner does not return to the base station after cleaning.**

- Check whether the protective film on the infrared window of the base station has been removed.

You may have started the cleaning process in normal mode from a location other than the base station.

If you start the Robot Vacuum Cleaner at a different location in the room, it returns there after cleaning.

Cleaning may have been interrupted, and the Robot Vacuum Cleaner could have been switched back on in a different place in the room.

The sensors on the base station or several sensors on the Robot Vacuum Cleaner may be covered or dirty (see Section “4.5 Cleaning the Robot Vacuum Cleaner and the base station” on page 50).

- Remove the objects covering the sensors on the Robot Vacuum Cleaner and clean the sensors.

The base station may be located behind a wall or other obstacle that is blocking the signal.

- Set up the base station in a different location.
- Make sure that there are no obstacles within 0.5 metres on both sides of the base station.

You may have cleaned an area using spot cleaning mode.

Once the Robot Vacuum Cleaner has cleaned the area, it automatically returns to the starting place and stops there. In normal cleaning mode, the Robot Vacuum Cleaner automatically returns to the base station.

The base station setup may not be optimal.

Test whether the base station setup is optimised:

- Start spot cleaning from the base station. If the Robot Vacuum Cleaner cannot find the base station afterwards, it is poorly set up. Try again in a different location.



If the faults cannot be eliminated, contact Vorwerk Customer Service (see Section “9 Service” on page 62). For more information, visit: [www.vorwerk-kobold.com](http://www.vorwerk-kobold.com)

## 7 DISPOSAL AND ENVIRONMENTAL PROTECTION

### 7.1 Device disposal



As an owner of an electric and electronic device, it is not permitted by law (under Directive 2012/19/EC of the European Parliament and Council of 4 July 2012 on electric and electronic devices, and the Electrics and Electronics Act of 16 March 2005) to dispose of this device or its electrical/ electronic accessories in unsorted household garbage.

- Use the return options provided free of charge instead.
- Contact your city or municipal administration for more information.
- You can also hand the device over to Vorwerk Customer Service.

### 7.2 Information for disposal of the battery



The following information is intended for the disposer of your Kobold VR200 Robot Vacuum Cleaner, not for you as the user!

The integrated lithium-ion batteries contain substances that may be harmful to the environment. Before scrapping the Robot Vacuum Cleaner, the batteries must be removed from the device and brought to a battery collection centre.

- Only remove the batteries when they are fully drained. The batteries must not come into contact with metal under any circumstances.

**Caution! Risk of injury due to battery leakage!**

Leaking batteries must not come into contact with the eyes and mucous membranes.

- Wash your hands and rinse the eyes with clear water. If you continue to have complaints, consult a doctor.

**REMOVING THE BATTERIES FROM THE KOBOLD VR200  
ROBOT VACUUM CLEANER**

The information that follows is intended for the disposer of the Robot Vacuum Cleaner, not for you as the user!



**Only remove the batteries when they are fully drained.  
The batteries must not come into contact with metal under any circumstances.**

Remove the batteries from the device as follows:

- Let the Robot Vacuum Cleaner run until it stops.
- Check whether the batteries really are fully drained by attempting to switch on the device again. If the motor starts, repeat the entire process.
- Remove the 2 screws from the battery compartment cover.
- Remove the battery compartment cover.
- Remove the batteries and pull off the battery plugs.

### **7.3 Disposing of the packaging**

The packaging is an important part of our product. It protects our device against damage during transportation and reduces the risk of device damage. Therefore we cannot eliminate the packaging. In case you have to bring or send your device for service or to Customer Service during or also after the warranty period, the original packaging provides the best protection against transport damage.

If you want to dispose of the packaging anyway, you may do so at any time and with no restrictions through your regional facilities (waste paper bin, yellow bin, recycling depot, waste paper collection point etc.). Vorwerk commissions legally authorised licensors for this purpose. In case of enquiries, please contact your authorised Service Centre (see “9 Service” on page 62).

### **7.4 Environmental protection information**

Conversation and protecting the environment: Protecting the environment is an important corporate objective for Vorwerk.

#### **LESS PACKAGING**

We use only environmentally friendly material that is reused with proper disposal. Even during development, we help avoid packaging waste and are committed to its disposal and recycling.

#### **SAVING ENERGY**

Vorwerk products protect the environment: They consume little energy, with high suction performance.



### **ENVIRONMENTALLY FRIENDLY PRODUCTION**

We place great emphasis on protecting the environment in the production of our products. We use recyclable plastics and paints. Environmentally hazardous flame retardants were purposefully not used.

Our instructions for use are made of materials that come from sustainable forestry operations and are bleached without the use of chlorine.

### **RECYCLABLE MATERIAL**

The material in our products is almost entirely recyclable.

We largely eliminate the use of PVC.

In the design of our products, we strive to use “homogeneous” material:

The substances that are used can later be separated into pure materials by modern facilities without excessive energy consumption. For even easier recycling, we have marked most of our plastic components.

## **8 WARRANTY**

Please consult your order form or purchase contract for the warranty provisions.

## **9 SERVICE**


Our service representatives are happy to help you.



[www.vorwerk-kobold.com](http://www.vorwerk-kobold.com)

**KOBOLD VR200  
ROBOT VACUUM CLEANER  
AND BASE STATION**

## 10 TECHNICAL DATA

<b>Kobold VR200 Robot Vacuum Cleaner</b>	
Safety symbol	
Housing	High-quality recyclable thermoformed plastic
Motor	Maintenance-free DC motor
Blower	Single-stage blower
Base station input voltage	100 – 240 volts alternate current, 50/60 hertz
Volume flow	12 – 13 l/s
Consumption	total approx. 70 W (depending on floor covering) / approx. 50 W (ECO option) - Blower: 50 W (ECO 30 W) - Brush: approx. 10 W (ECO approx. 7 W) - Standby approx. 2.5 W
Battery capacity	max. 60 minutes/90 minutes (depending on cleaning mode, floor covering and livings situation)
Weight	approx. 5 kg (device and base station)
Noise emissions	74 dbA (measured under open air conditions on carpet)
Battery pack	Li-Ion 14.4 V; approx. 84 Wh, nominal
Battery charge times	after 1.5 hours: cleaning is possible again after max. 3 hours: full battery charge level
Battery charging cycles / battery life	70% capacity after approx. 800 full cycles
Base station	Type B-VR200
Remote control	Infrared, range up to approx. 5 metres
IEC/EN SL Mode	2x arrow key up and 2x arrow key down

---

# kobold

VR200 ROBOT VACUUM CLEANER



## UNITED KINGDOM

Vorwerk UK Limited  
Ashurst Manor  
Church Lane,  
Ascot,  
Berkshire  
SL5 7DD

